

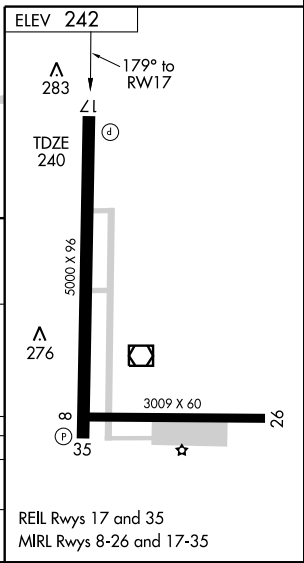
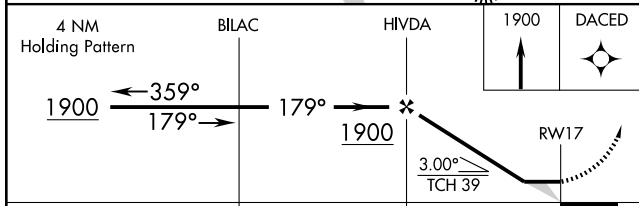
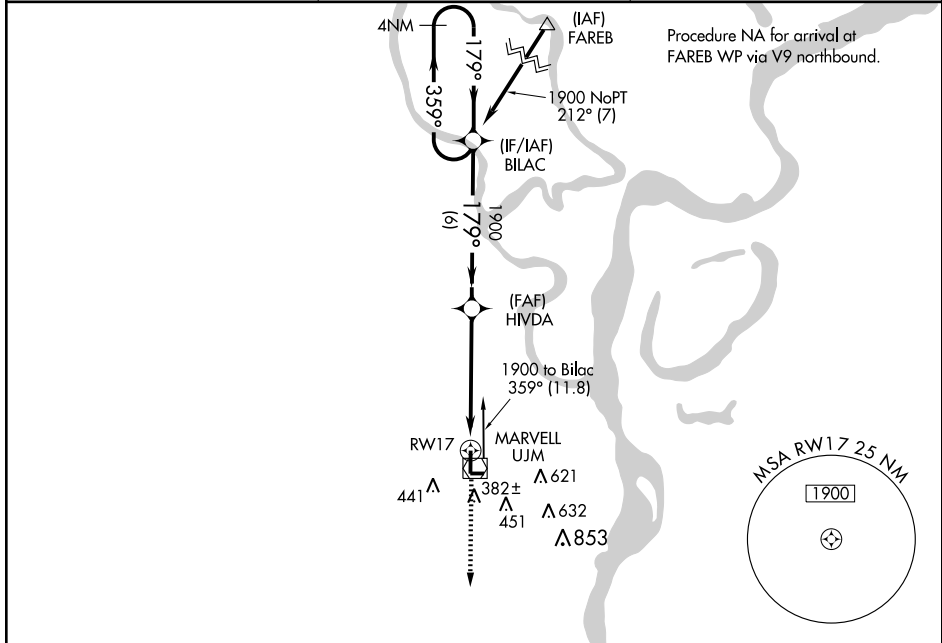
RNAV (GPS) RWY 17

HELENA/WEST HELENA/THOMPSON-ROBBINS (HEE)

APP CRS 179°	Rwy Idg 5000
	TDZE 240
	Apt Elev 242

NA GPS or RNP-0.3 required. DME/DME RNP-0.3 NA. Use Clarksdale, MS altimeter setting. MISSED APPROACH: Climb to 1900 direct DACED WP and hold.

CLARKSDALE, MS AWOS-3 120.675	MEMPHIS CENTER 135.3 335.8	UNICOM 122.8 (CTAF)
---	--------------------------------------	-------------------------------



CATEGORY	A	B	C	D
LNVA MDA	820-1	580 (600-1)	820-1½ 580 (600-1½)	NA
CIRCLING	840-1	598 (600-1)	840-1½ 598 (600-1½)	NA

RNAV (GPS) RWY 17

SC-1, 22 OCT 2009 to 19 NOV 2009

SC-1, 22 OCT 2009 to 19 NOV 2009

REIL Rwy 17 and 35
MIRL Rwy 8-26 and 17-35