

| | | | |
|------------|---------|----------|------|
| VORTAC AHN | APP CRS | Rwy Idg | 4000 |
| 109.6 | 014° | TDZE | 805 |
| Chan 33 | | Apt Elev | 808 |

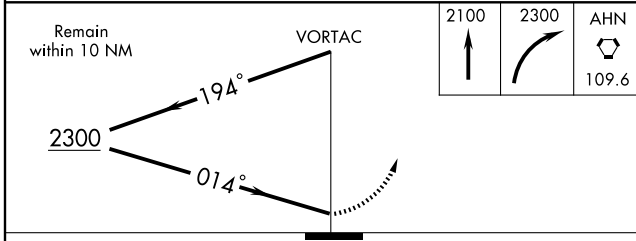
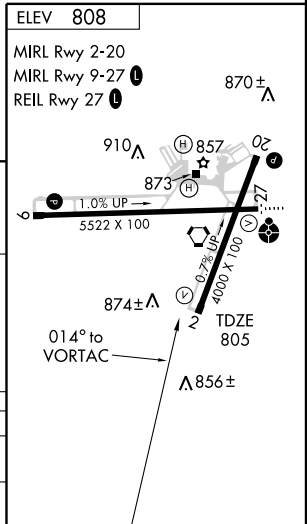
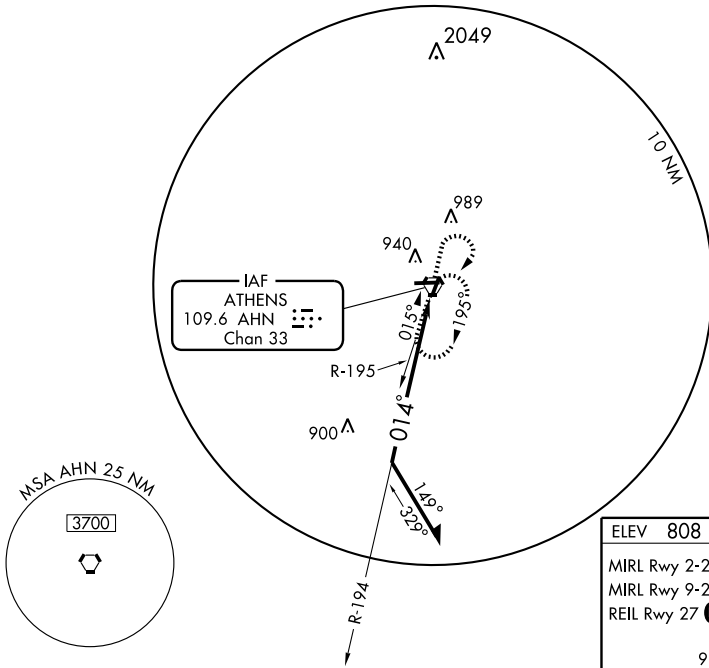
VOR RWY 2

ATHENS/BEN EPPS (AHN)

▼ Visibility reduction by helicopters NA.
▲ When local altimeter setting not received, use Winder altimeter setting and increase all MDA 60 feet, and S-2 Cat. D visibility ¼ mile.

MISSED APPROACH: Climb to 2100 then climbing right turn to 2300 direct AHN VORTAC and hold.

| | | | | | |
|---------|------------------|-------------------------------|---------|---|--------|
| ASOS | ATLANTA APP CON* | ATHENS TOWER* | GND CON | CLNC DEL | UNICOM |
| 132.875 | 132.475 291.1 | 126.3 (CTAF) 0 338.275 | 121.8 | 127.5 (when tower closed) 316.05 (when tower closed) | 122.95 |



| CATEGORY | A | B | C | D |
|----------|-----------------------|-----------------------|-------------------------|-------------------------|
| S-2 | 1220-1 415 (500-1) | | | 1220-1¼ 415 (500-1¼) |
| CIRCLING | 1240-1 432 (500-1) | 1260-1 452 (500-1) | 1260-1½ 452 (500-1½) | 1360-2 552 (600-2) |