

# RNAV (GPS) RWY 27

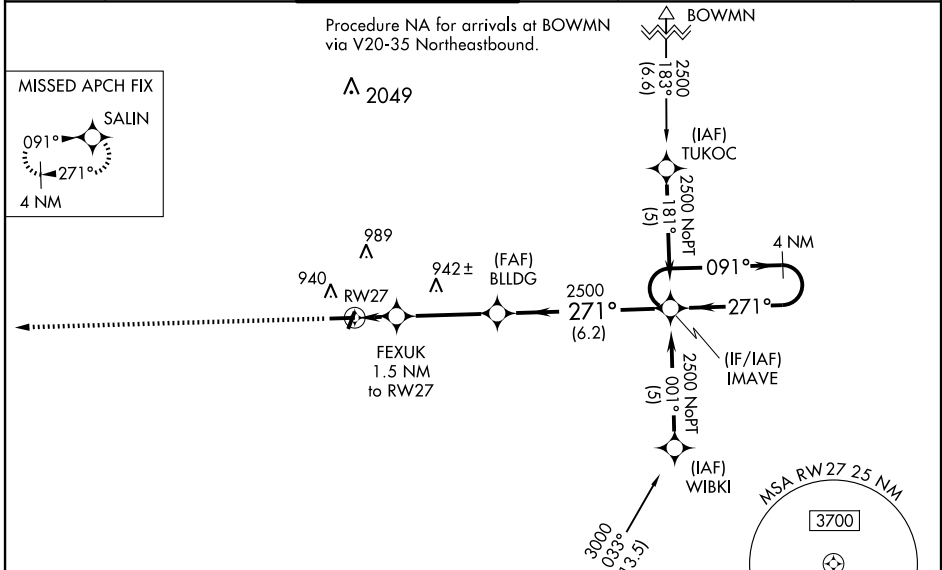
ATHENS/BEN EPPS (AHN)

WAAS CH <b>69503</b>	APP CRS <b>271°</b>	Rwy Idg <b>5522</b>
<b>W27A</b>	<b>271°</b>	TDZE <b>808</b>
		Apt Elev <b>808</b>

For uncompensated Baro-VNAV systems, LNAV/VNAV NA below -16°C (4°F) or above 47°C (116°F). DME/DME RNP-0.3 NA. When local altimeter setting not received, use Winder altimeter setting and increase all DA 59 feet and all MDA 60 feet; increase LPV visibility to 1 mile all Cats., LNAV/VNAV visibility to 1¼ mile all Cats., and LNAV Cat. D visibility to 1¼ mile. Baro-VNAV and VDP NA when using Winder altimeter setting. Inoperative table does not apply to LNAV/VNAV all Cats. when using Winder altimeter setting.

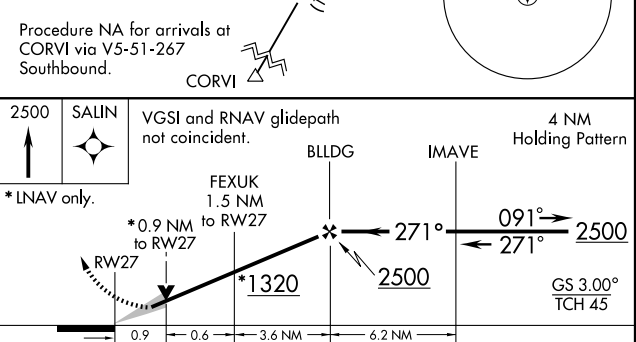
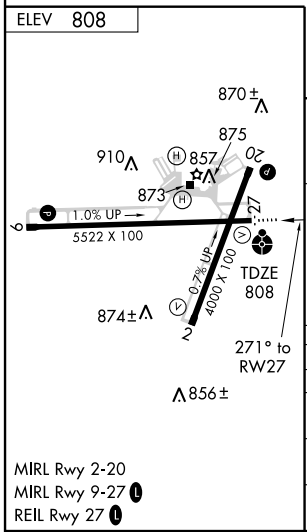
**ODALS**  
 MISSED APPROACH: Climb to 2500 direct SALIN and hold.

ASOS <b>132.875</b>	ATLANTA APP CON* <b>132.475 291.1</b>	ATHENS TOWER* <b>126.3 (CTAF) 0 338.275</b>	GND CON <b>121.8</b>	CLNC DEL (when tower closed) <b>127.5</b> (when tower closed) <b>316.05</b>	UNICOM <b>122.95</b>
------------------------	--	--	-------------------------	---	-------------------------



SE-4, 22 OCT 2009 to 19 NOV 2009

SE-4, 22 OCT 2009 to 19 NOV 2009



CATEGORY	A	B	C	D
LPV DA	1058- <sup>3</sup> / <sub>4</sub> 250 (300- <sup>3</sup> / <sub>4</sub> )			
LNAV/VNAV DA	1120- <sup>3</sup> / <sub>4</sub>	312 (400- <sup>3</sup> / <sub>4</sub> )	1120-1 312 (400-1)	
LNAV MDA	1140- <sup>3</sup> / <sub>4</sub>	332 (400- <sup>3</sup> / <sub>4</sub> )	1140-1 332 (400-1)	
CIRCLING	1240-1 432 (500-1)	1260-1 452 (500-1)	1260-1½ 452 (500-1½)	1360-2 552 (600-2)