

| | | | |
|------------|-------------|----------|-------------|
| NDB BJT | APP CRS | Rwy Idg | 5522 |
| 221 | 272° | TDZE | 808 |
| | | Apt Elev | 808 |

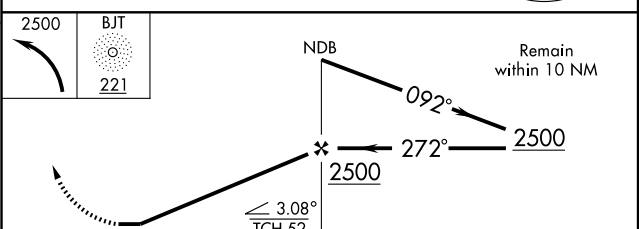
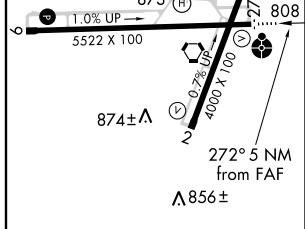
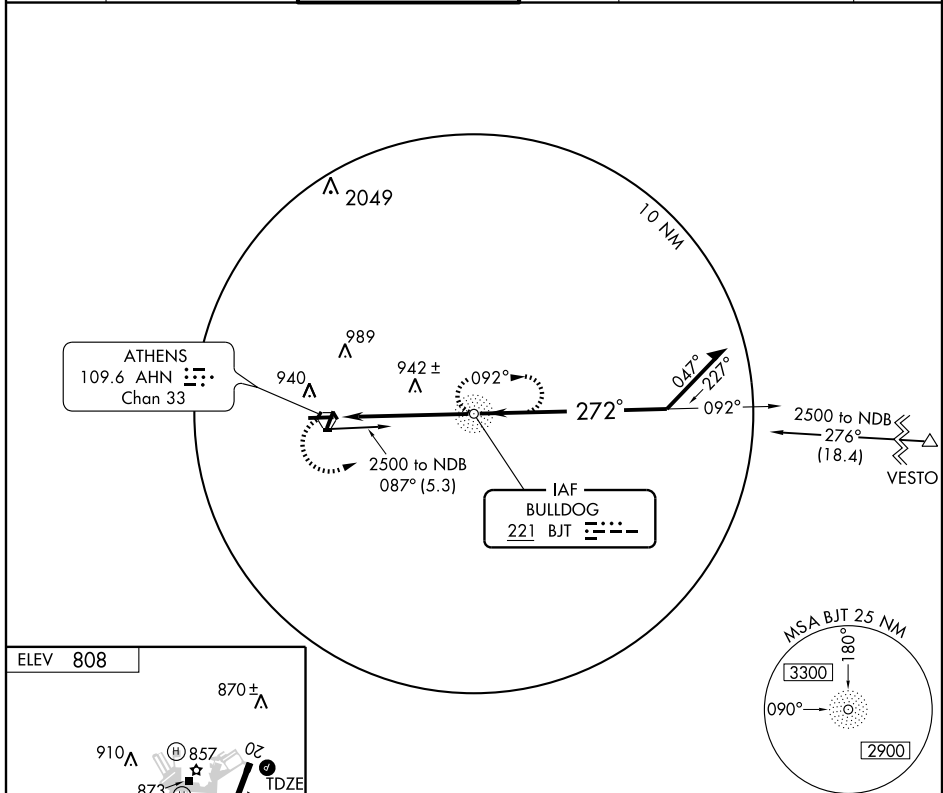
NDB RWY 27

ATHENS/BEN EPPS (AHN)

▼ When local altimeter setting not received, use Winder altimeter setting and increase all MDA 60 feet and increase S-27 Cats. C and D visibility ¼ mile. Inoperative table does not apply to Cat. C.

ODALS MISSED APPROACH: Climbing left turn to 2500 direct BJT NDB and hold.

| | | | | | |
|----------------|----------------------|-------------------------------|--------------|---|---------------|
| ASOS | ATLANTA APP CON* | ATHENS TOWER* | GND CON | CLNC DEL | UNICOM |
| 132.875 | 132.475 291.1 | 126.3 (CTAF) 0 338.275 | 121.8 | 127.5 (when tower closed) 316.05 (when tower closed) | 122.95 |



MIRL Rwy 2-20
MIRL Rwy 9-27
REIL Rwy 27

FAF to MAP 5 NM

| | | | | | |
|---------|------|------|------|------|------|
| Knots | 60 | 90 | 120 | 150 | 180 |
| Min:Sec | 5:00 | 3:20 | 2:30 | 2:00 | 1:40 |

| CATEGORY | A | B | C | D |
|----------|--------------------|---|----------------------|----------------------|
| S-27 | 1300-¾ 492 (500-¾) | | 1300-1¼ 492 (500-1¼) | 1300-1½ 492 (500-1½) |
| CIRCLING | 1300-1 492 (500-1) | | 1300-1½ 492 (500-1½) | 1360-2 552 (600-2) |

SE-4, 22 OCT 2009 to 19 NOV 2009

SE-4, 22 OCT 2009 to 19 NOV 2009