

RNAV (GPS) RWY 20

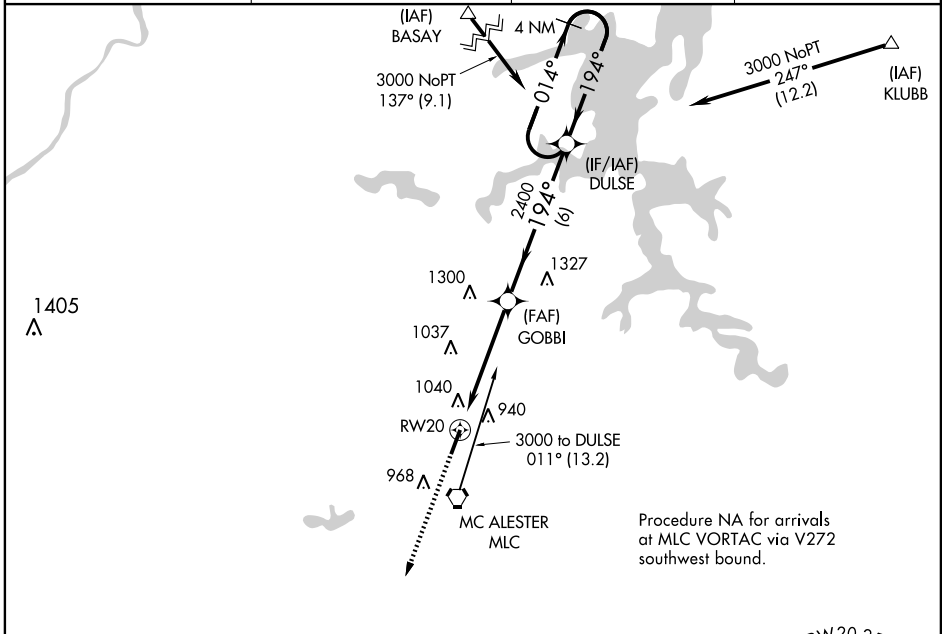
MC ALESTER RGNL (MLC)

APP CRS 194°	Rwy Idg 5602
	TDZE 770
	Apt Elev 770

▼ DME/DME RNP-0.3 NA. When local altimeter setting not received, use Ada Muni altimeter setting and increase all MDA 140 feet, and increase LNAV Cat C and D visibility ½ mile and Circling Cat C and D visibility ¼ mile. Visibility reduction by helicopters NA.

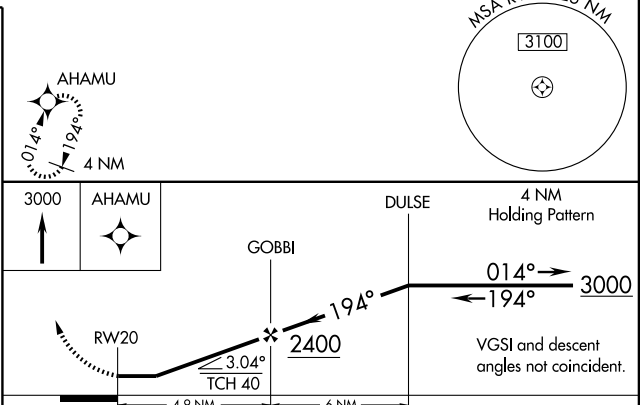
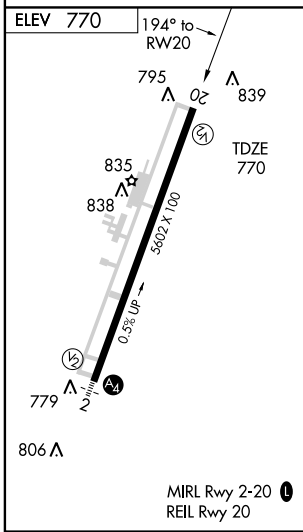
MISSED APPROACH: Climb to 3000 direct AHAMU and hold.

ASOS 135.125	FORT WORTH CENTER 132.2 338.35	MC ALESTER RADIO 122.65	UNICOM 122.95 (CTAF)
------------------------	--	-----------------------------------	--------------------------------



SC-1, 22 OCT 2009 to 19 NOV 2009

SC-1, 22 OCT 2009 to 19 NOV 2009



CATEGORY	A	B	C	D
LNAV MDA	1340-1	570 (600-1)	1340-1½ 570 (600-1½)	1340-1¾ 570 (600-1¾)
CIRCLING	1400-1	630 (700-1)	1400-1¾ 630 (700-1¾)	1400-2 630 (700-2)

MC ALESTER RGNL (MLC)

RNAV (GPS) RWY 20