

# RNAV (GPS) RWY 2

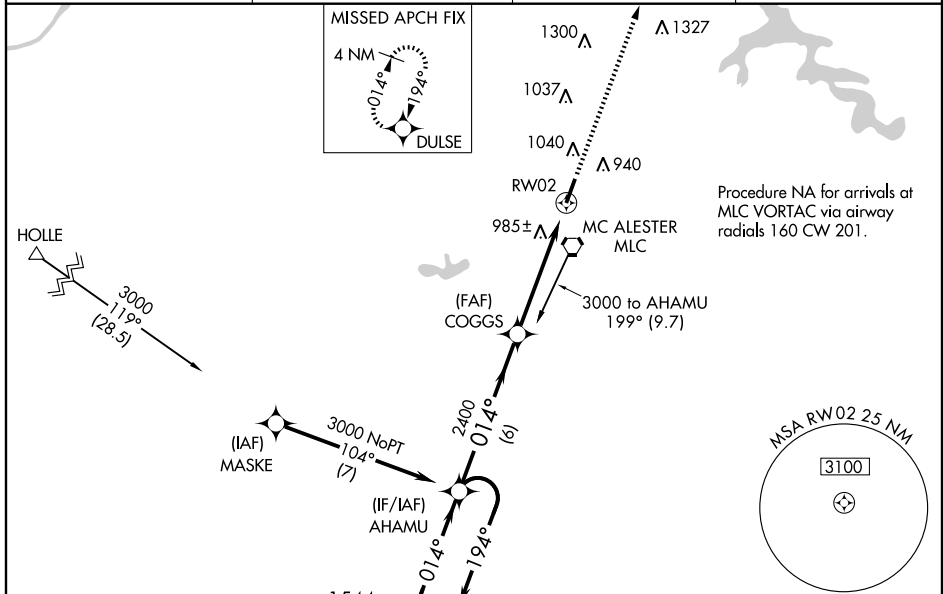
MC ALESTER RGNL (MLC)

WAAS CH <b>50201</b> <b>W02A</b>	APP CRS <b>014°</b>	Rwy Idg <b>5602</b> TDZE <b>755</b> Apt Elev <b>770</b>
--	------------------------	---

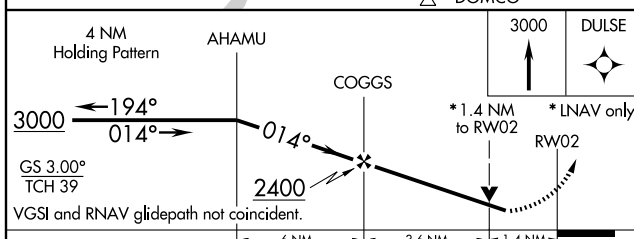
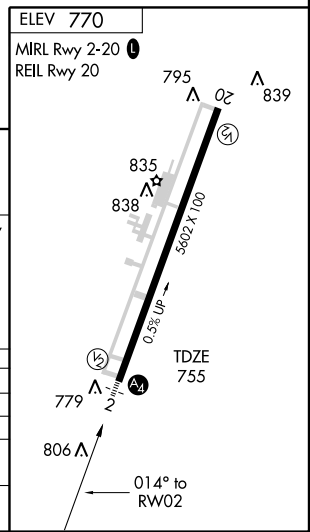
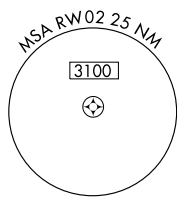
**⚠** Inoperative table does not apply to LPV all Cats, LNAV/VNAV all Cats and LNAV Cat C. Baro-VNAV NA when using Ada Muni altimeter setting. For uncompensated Baro-VNAV systems, LNAV/VNAV NA below -16°C (4°F) or above 47°C (117°F). DME/DME RNP-0.3 NA. VDP NA when using Ada Muni altimeter setting. Visibility reduction by helicopters NA. When local altimeter setting not received, use Ada Muni altimeter setting and increase all DA/MDA 140 feet, and all visibilities ½ mile.

**MALS**  
MISSED APPROACH:  
Climb to 3000 direct DULSE and hold.

ASOS <b>135.125</b>	FORT WORTH CENTER <b>132.2 338.35</b>	MC ALESTER RADIO <b>122.65</b>	UNICOM <b>122.95 (CTAF)</b>
------------------------	--	-----------------------------------	--------------------------------



Procedure NA for arrivals at MLC VORTAC via airway radials 160 CW 201.



CATEGORY	A	B	C	D
LPV DA	1200-1¾		445 (500-1¾)	
LNAV/VNAV DA	1291-2		536 (600-2)	
LNAV MDA	1240-¾	485 (500-¾)	1240-1¼	1240-1½
			485 (500-1¼)	485 (500-1½)
CIRCLING	1400-1	630 (700-1)	1400-1¾	1400-2
			630 (700-¾)	630 (700-2)

SC-1, 22 OCT 2009 to 19 NOV 2009

SC-1, 22 OCT 2009 to 19 NOV 2009