

SALISBURY, MARYLAND

AL-977 (FAA)

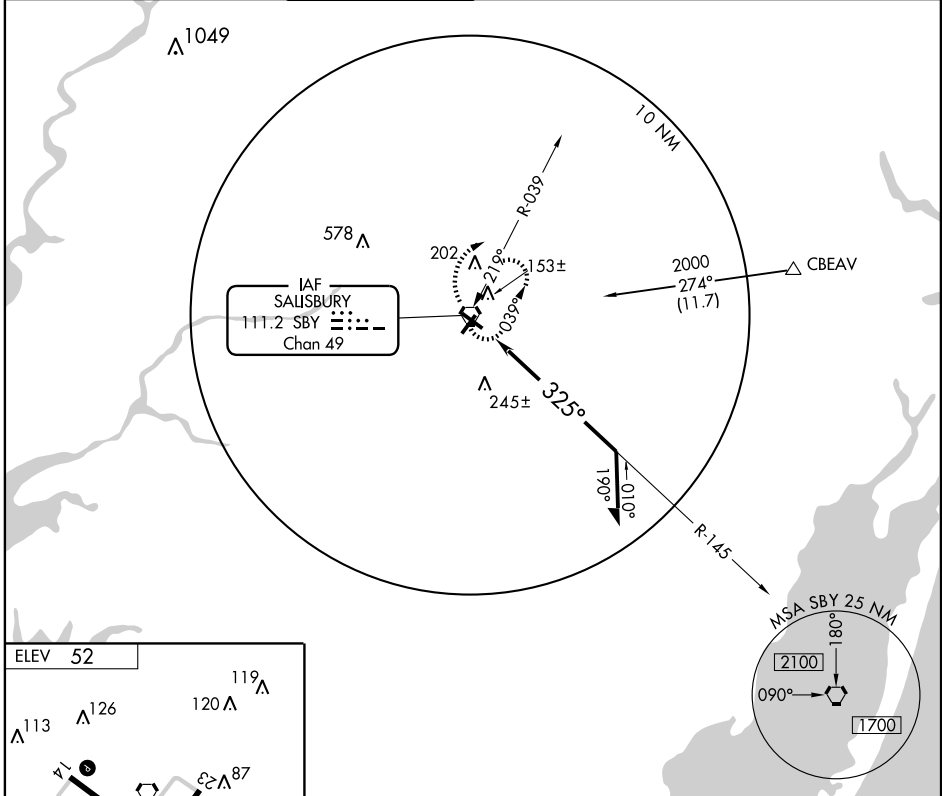
VOR RWY 32

SALISBURY-OCEAN CITY WICOMICO RGNL (SBY)

VORTAC SBY 111.2 Chan 49	APP CRS 325°	Rwy Idg 5500 TDZE 52 Apt Elev 52
--	------------------------	---

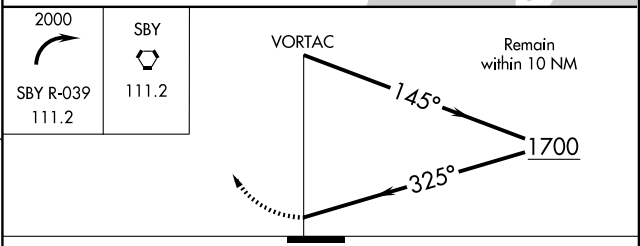
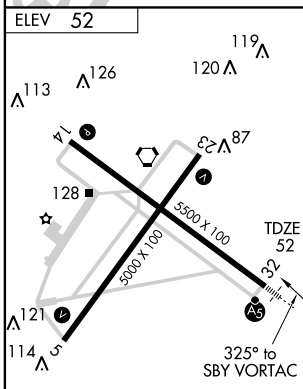
CAT D S-32 visibility increased ¼ mile for inoperative MALSAR.	MALSAR 	MISSED APPROACH: Climbing right turn to 2000 via SBY R-039 then direct SBY VORTAC and hold.
--	------------	---

ASOS 118.325	PATUXENT APP CON ★ 127.95 314.0	SALISBURY TOWER ★ 119.425 (CTAF)	GND CON 123.775	CLNC DEL 118.55 123.775 (2230-0600) (0600-2230)	UNICOM 122.95
------------------------	---	--	---------------------------	--	-------------------------



NE-3, 22 OCT 2009 to 19 NOV 2009

NE-3, 22 OCT 2009 to 19 NOV 2009



CATEGORY	A	B	C	D
S-32	460-½	408 (500-½)	460-¾ 408 (500-¾)	460-1 408 (500-1)
CIRCLING	460-1 408 (500-1)	520-1 468 (500-1)	520-1½ 468 (500-1½)	620-2 568 (600-2)

REIL Rws 5, 14 and 23
MIRL Rwy 5-23
HIRL Rwy 14-32

SALISBURY, MARYLAND
Amdt 9A 09295

SALISBURY-OCEAN CITY WICOMICO RGNL (SBY)
38°20'N - 75°31'W
VOR RWY 32