

# RNAV (GPS) RWY 5

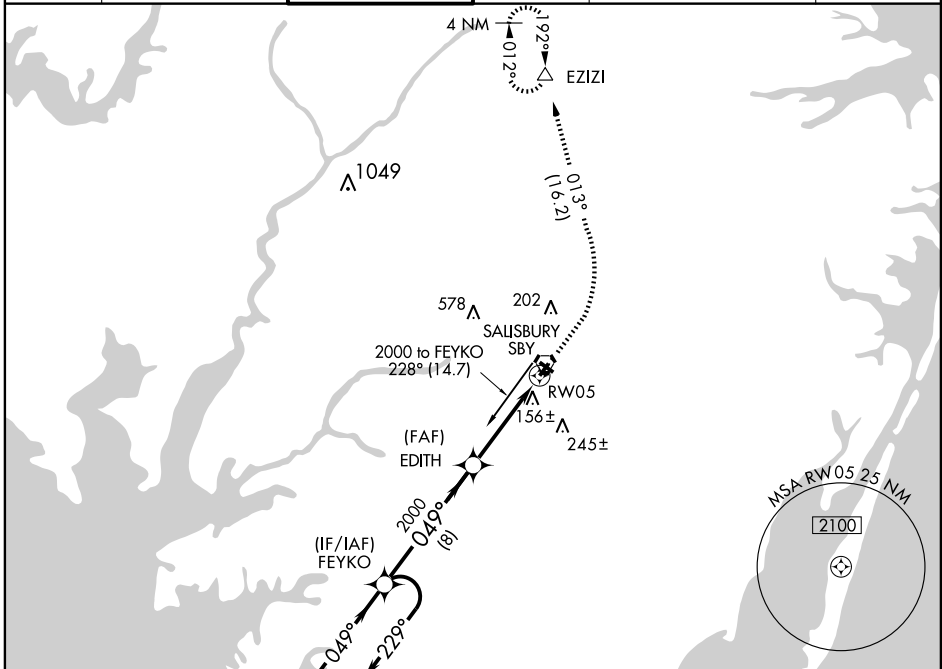
SALISBURY-OCEAN CITY WICOMICO RGNL (SBY)

APP CRS <b>049°</b>	Rwy Idg TDZE Apt Elev	<b>5000</b> <b>48</b> <b>52</b>
------------------------	-----------------------------	---------------------------------------

**NA** GPS or RNP - 0.3 required.  
DME/DME RNP - 0.3 NA.

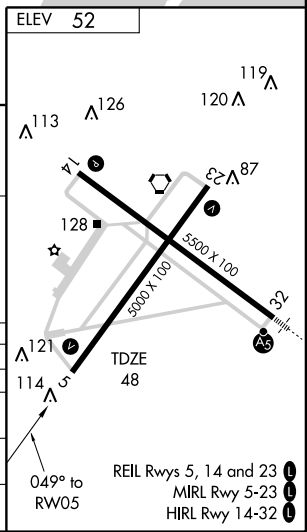
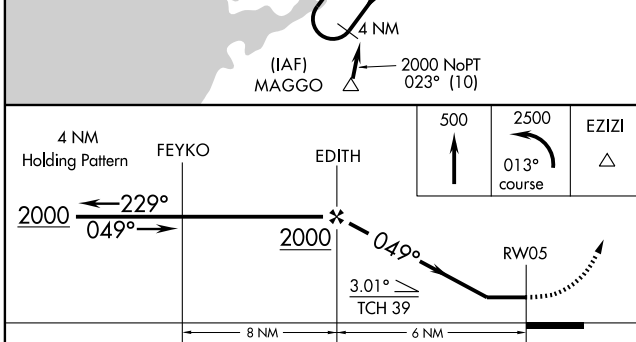
**MISSED APPROACH:** Climbs to 500, then climbing left turn to 2500 via course 013° to EZIZI and hold.

ASOS <b>118.325</b>	PATUXENT APP CON ★ <b>127.95 314.0</b>	SALISBURY TOWER ★ <b>119.425</b> (CTAF) <b>0</b>	GND CON <b>123.775</b>	CLNC DEL <b>118.55 123.775</b> (2230-0600) (0600-2230)	UNICOM <b>122.95</b> <b>AS</b>
------------------------	---	---	---------------------------	--	-----------------------------------



NE-3, 22 OCT 2009 to 19 NOV 2009

NE-3, 22 OCT 2009 to 19 NOV 2009



CATEGORY	A		B		C		D	
GLS DA	NA							
LNAV/VNAV DA	NA							
LNAV	420-1 372 (400-1)				420-1 1/4 372 (400-1 1/4)			
CIRCLING	460-1 408 (500-1)	520-1 468 (500-1)	520-1 1/2 468 (500-1 1/2)	520-1 1/2 468 (500-1 1/2)	620-2 568 (600-2)	620-2 568 (600-2)	620-2 568 (600-2)	620-2 568 (600-2)

# RNAV (GPS) RWY 5

REIL Rwy 5, 14 and 23 **0**  
MRL Rwy 5-23 **0**  
HIRL Rwy 14-32 **0**