

RNAV (GPS) RWY 14

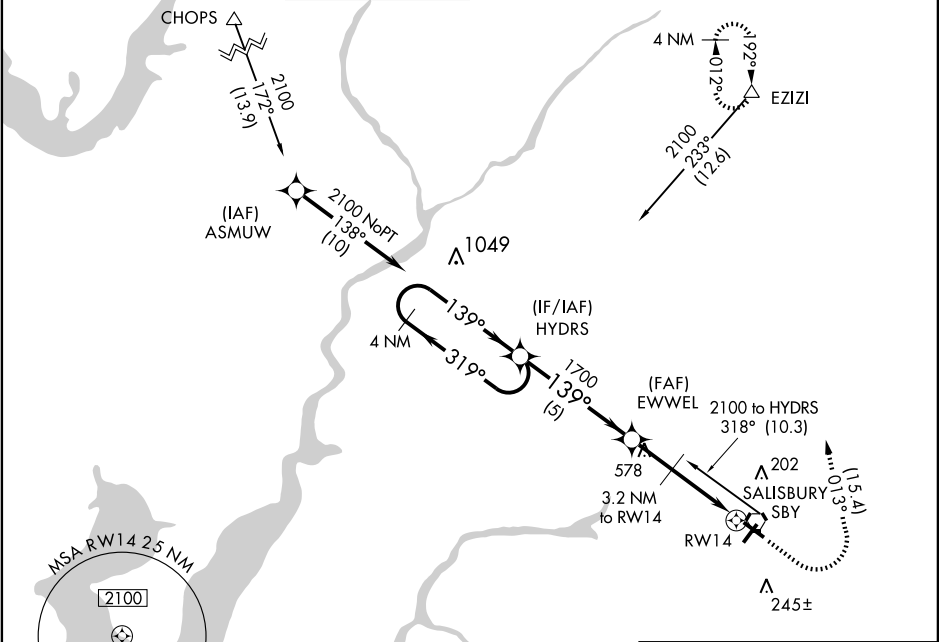
SALISBURY-OCEAN CITY WICOMICO RGNL (SBY)

APP CRS 139°	Rwy Idg 5500
	TDZE 49
	Apt Elev 52

▽ ▲ NA	GPS or RNP - 0.3 required. DME/DME RNP - 0.3 NA.
-------------------------	---

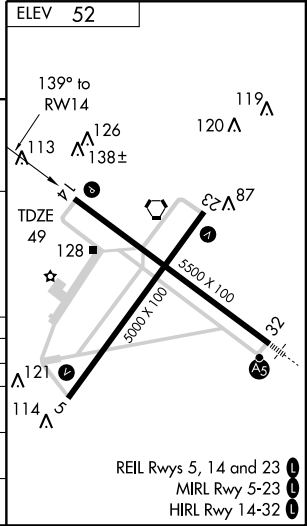
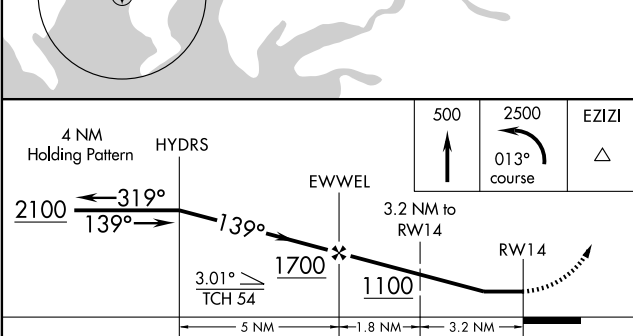
MISSED APPROACH: Climb to 500, then climbing left turn to 2500 via course 013° to EZIZI and hold.

ASOS 118.325	PATUXENT APP CON★ 127.95 314.0	SALISBURY TOWER★ 119.425 (CTAF) 0	GND CON 123.775	CLNC DEL 118.55 123.775 (2230-0600) (0600-2230)	UNICOM 122.95 AS
------------------------	--	---	---------------------------	--	-----------------------------------



NE-3, 22 OCT 2009 to 19 NOV 2009

NE-3, 22 OCT 2009 to 19 NOV 2009



CATEGORY	A	B	C	D
GLS DA			NA	
LNAV/VNAV DA			NA	
LNAV	400-1	351 (400-1)		400-1½ 351 (400-1½)
CIRCLING	460-1 408 (500-1)	520-1 468 (500-1)	520-1½ 468 (500-1½)	620-2 568 (600-2)

RNAV (GPS) RWY 14