

ILS or LOC RWY 32

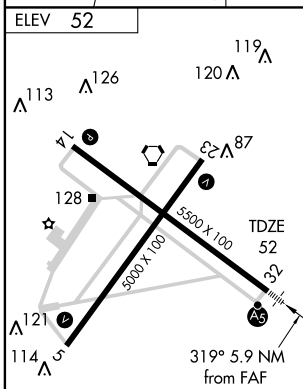
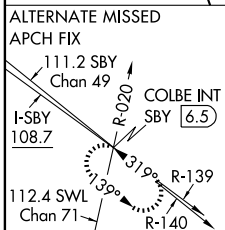
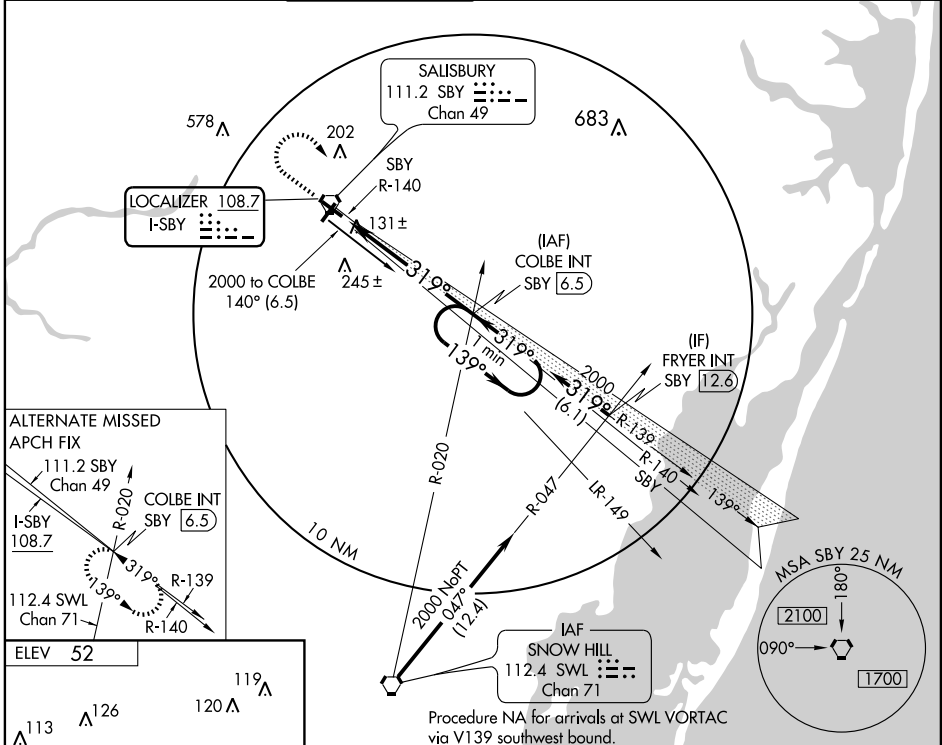
SALISBURY-OCEAN CITY WICOMICO RGNL (SBY)

LOC I-SBY 108.7	APP CRS 319°	Rwy Idg 5500	TDZE 52
		Apt Elev 52	

⚠ When local altimeter setting not received, use Georgetown altimeter setting and increase DA 52 feet and all MDA 60 feet, and increase S-LOC 32 Cat C visibility ¼ mile.

MALSR MISSED APPROACH: Climb to 700, then climbing right turn to 2000 via heading 170° and SBY VORTAC R-140 to COLBE INT/SBY 6.5 DME and hold.

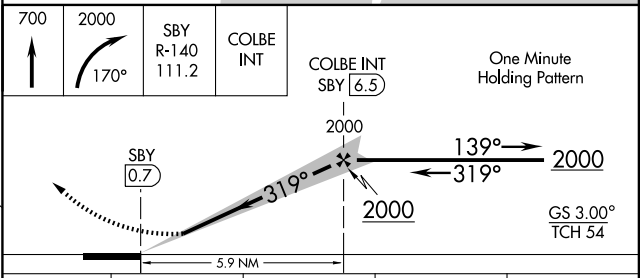
ASOS 118.325	PATUXENT APP CON * 127.95 314.0	SALISBURY TOWER * 119.425 (CTAF)	GND CON 123.775	CLNC DEL 118.55 123.775 (2230-0600) (0600-2230)	UNICOM 122.95
------------------------	-------------------------------------------	--------------------------------------------	---------------------------	--------------------------------------------------------------	-------------------------



REIL Rwy 5, 14 and 23
MIRL Rwy 5-23
HIRL Rwy 14-32

FAF to MAP 5.9 NM

Knots	60	90	120	150	180
Min:Sec	5:54	3:56	2:57	2:22	1:58



CATEGORY	A	B	C	D
S-ILS 32	252-½ 200 (200-½)			
S-LOC 32	400-½	348 (400-½)	400-¾ 348 (400-¾)	
CIRCLING	460-1 408 (500-1)	520-1 468 (500-1)	520-1½ 468 (500-1½)	620-2 568 (600-2)

NE-3, 22 OCT 2009 to 19 NOV 2009

NE-3, 22 OCT 2009 to 19 NOV 2009