

RNAV (GPS) RWY 12

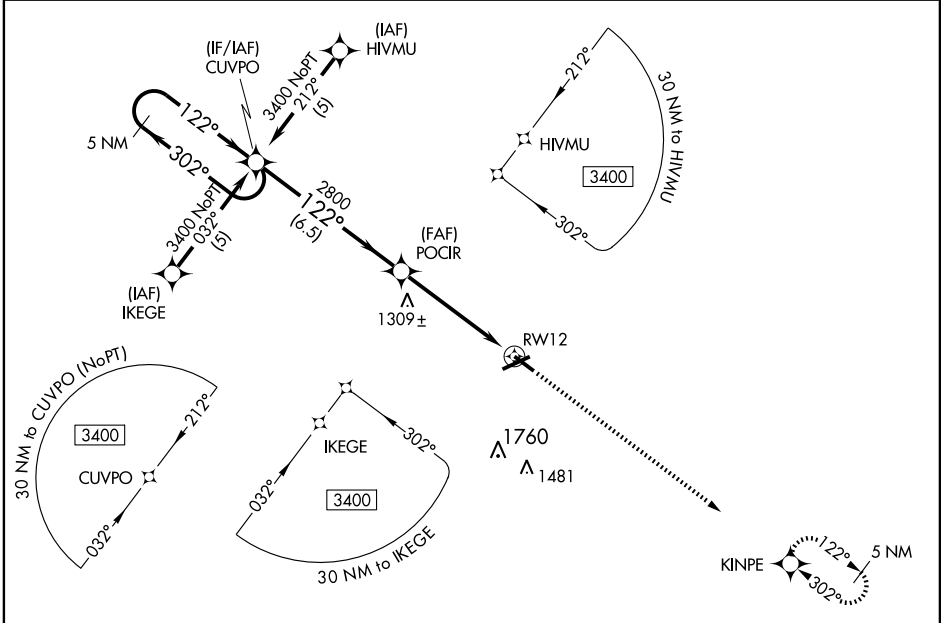
FORT DODGE RGNL (FOD)

APP CRS 122°	Rwy Idg 5301
	TDZE 1128
	Apt Elev 1157

⚠ If local altimeter setting not received, use Webster City altimeter setting and increase all MDAs 60 feet.
⚠ DME/DME RNP-0.3 NA.
 Visibility reduction by helicopters NA.

MISSED APPROACH: Climb to 3400 direct KINPE and hold.

AWOS-3 118.775	MINNEAPOLIS CENTER 134.0 288.3	UNICOM 122.95 (CTAF)
--------------------------	--	--------------------------------



NC-3, 22 OCT 2009 to 19 NOV 2009

NC-3, 22 OCT 2009 to 19 NOV 2009

5 NM Holding Pattern		CUVPO		PO CIR		RW12	
3400		3400		3400		KINPE	
← 302°		122°		122°		3.04° TCH 51	
		6.5 NM		5.1 NM			
CATEGORY	A	B	C	D			
RNAV MDA	1560-1	432 (500-1)	1560-1½ 432 (500-1½)	1560-1½ 432 (500-1½)			
CIRCLING	1560-1 403 (500-1)	1620-1 463 (500-1)	1620-1½ 463 (500-1½)	1720-2 563 (600-2)			

ELEV 1157 **D**

122° to RW12

TDZE 1128

1164±

1139±

1115±

1177

1254

1189±

0.6% UP

1.2% UP

6547 X 150

5301 X 100

- MIRL Rwy 12-30 **Ⓛ**
- HIRL Rwy 6-24 **Ⓛ**
- REIL Rwy 12, 24 and 30 **Ⓛ**