

# VOR RWY 14

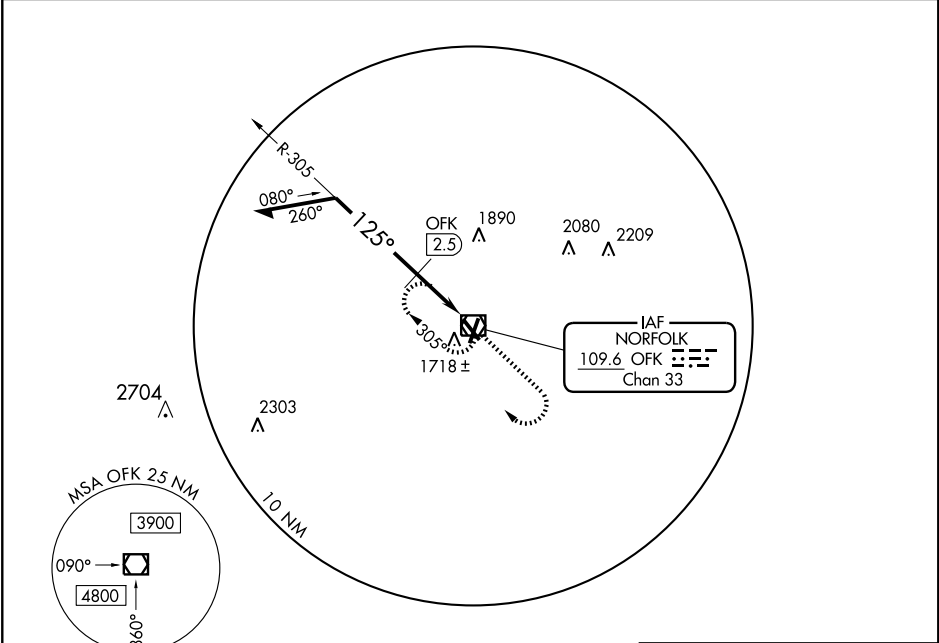
NORFOLK/ KARL STEFAN MEMORIAL (OFK)

VOR/DME OFK <b>109.6</b> Chan 33	APP CRS <b>125°</b>	Rwy Idg TDZE Apt Elev	<b>5160</b> <b>1543</b> <b>1573</b>
--	------------------------	-----------------------------	---

**▲ NA**

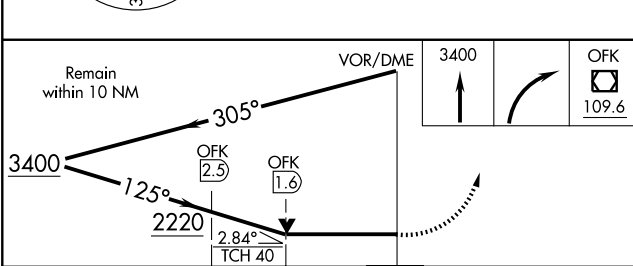
MISSED APPROACH: Climb to 3400, then right turn direct OFK VOR/DME and hold.

ASOS <b>119.025</b>	COLUMBUS RADIO <b>122.15</b>	UNICOM <b>122.7 (CTAF) 0</b>
------------------------	---------------------------------	---------------------------------

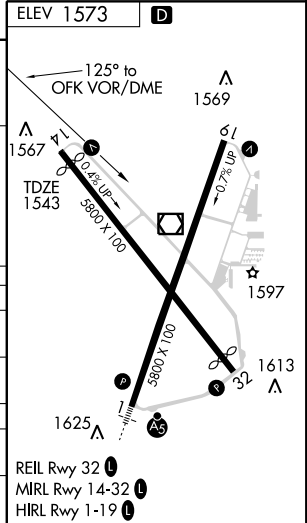


NC-2, 22 OCT 2009 to 19 NOV 2009

NC-2, 22 OCT 2009 to 19 NOV 2009



CATEGORY	A	B	C	D
S-14	2220-1	677 (700-1)	2220-2 677 (700-2)	NA
CIRCLING	2220-1	647 (700-1)	2220-2 647 (700-2)	NA
DME MINIMUMS				
S-14	1980-1	437 (500-1)	1980-1½ 437 (500-1½)	NA
CIRCLING	2080-1	507 (600-1)	2080-1½ 507 (600-1½)	NA



# VOR RWY 14