

NORFOLK, NEBRASKA

AL-974 (FAA)

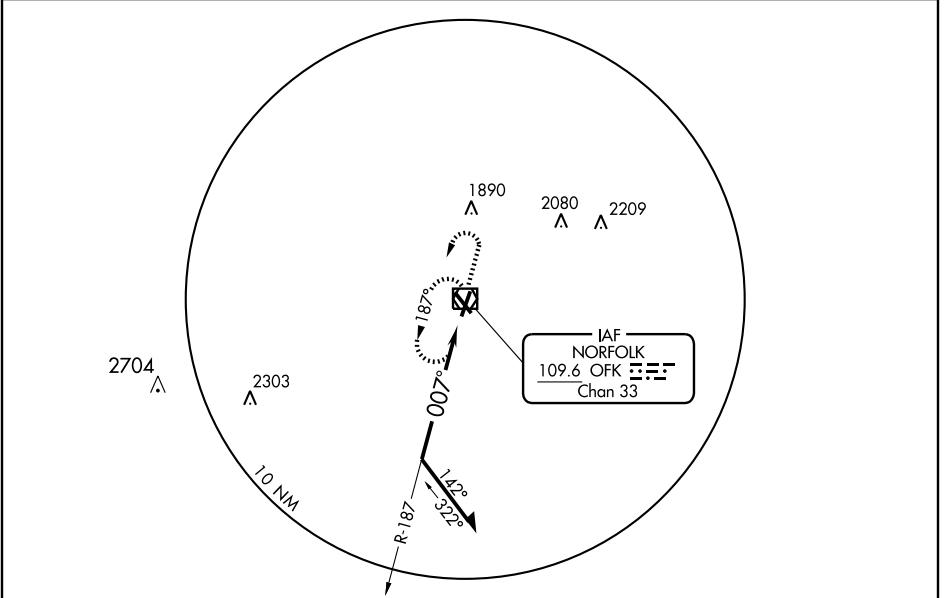
VOR/DME OFK 109.6 Chan 33	APP CRS 007°	Rwy Idg TDZE 1573 Apt Elev 1573
---	------------------------	---

VOR RWY 1

NORFOLK/ KARL STEFAN MEMORIAL (OFK)

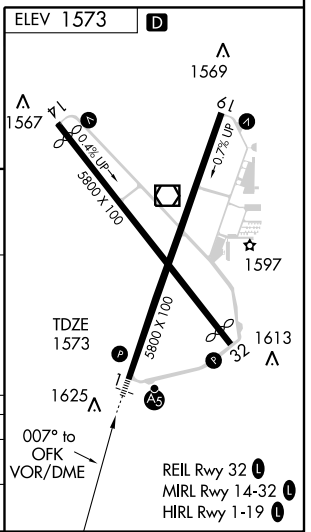
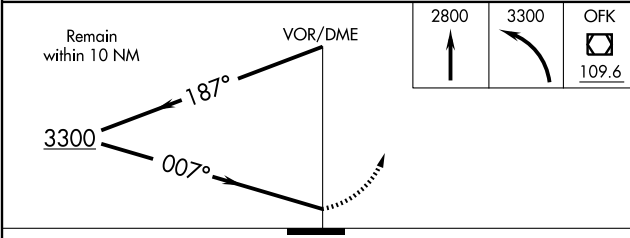
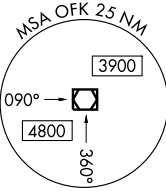
▲ NA For inoperative MALS, increase S-1 and Cat A, and B visibility to 1 mile.	MALS R AS	MISSED APPROACH: Climb to 2800, then climbing left turn to 3300 direct OFK VOR/DME and hold.
--	---------------------	--

ASOS 119.025	COLUMBUS RADIO 122.15	UNICOM 122.7 (CTAF)
------------------------	---------------------------------	-------------------------------



NC-2, 22 OCT 2009 to 19 NOV 2009

NC-2, 22 OCT 2009 to 19 NOV 2009



CATEGORY	A	B	C	D
S-1	2220- $\frac{3}{4}$	647 (700- $\frac{3}{4}$)	2220-1 $\frac{1}{4}$ 647 (700-1 $\frac{1}{4}$)	NA
CIRCLING	2220-1	647 (700-1)	2220-1 $\frac{3}{4}$ 647 (700-1 $\frac{3}{4}$)	NA

NORFOLK, NEBRASKA
Amdt 8 09239

NORFOLK/ KARL STEFAN MEMORIAL (OFK)

41° 59'N-97° 26'W

VOR RWY 1

REIL Rwy 32
MIRL Rwy 14-32
HIRL Rwy 1-19