


WAAS Chan 50120 W01A	APP CRS 011°	Rwy Idg TDZE Apt Elev	5800 1573 1573
-----------------------------------	------------------------	-----------------------------	---

RNAV (GPS) RWY 1

NORFOLK/ KARL STEFAN MEMORIAL (OFK)

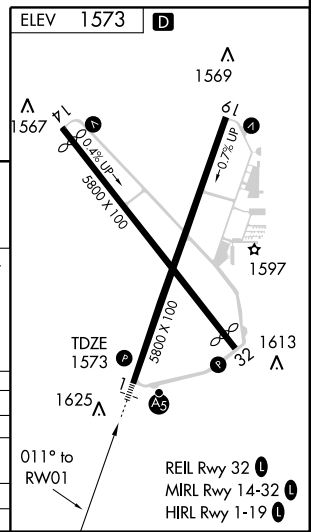
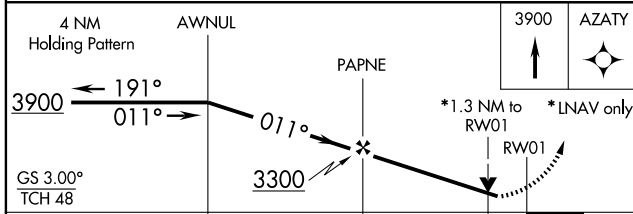
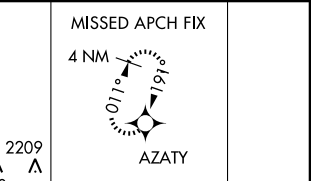
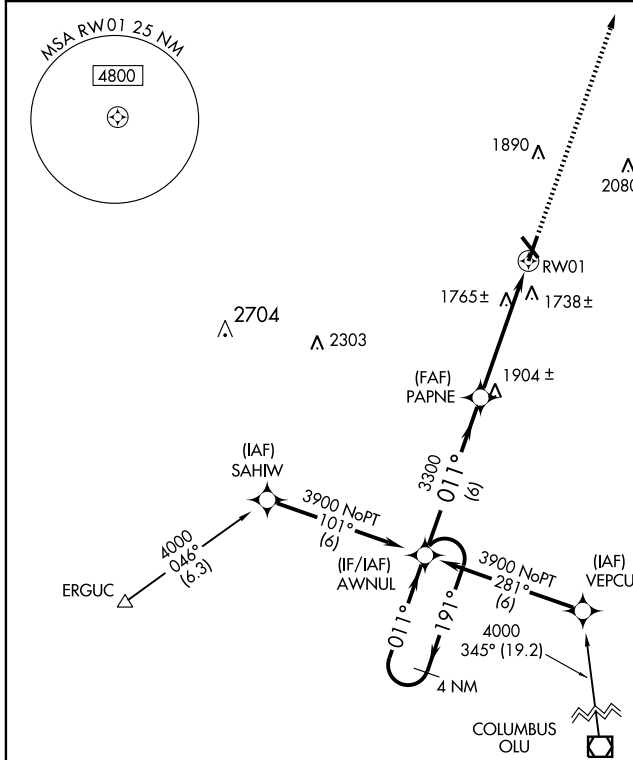
▲ DME/DME RNP-0.3 NA. Baro-VNAV NA below -18°C (0°F).
 For inoperative MALSR, increase LPV all Cats visibility to 1½, and LNAV Cat A/B visibility to 1.
 If local altimeter setting not received, use Columbus altimeter setting and increase all DAs/MDAs 100 feet.
 VDP and Baro-VNAV NA when using Columbus altimeter setting.

MALSR

MISSED APPROACH: Climb to 3900 direct AZATY and hold.

ASOS
119.025

COLUMBUS RADIO
122.15

UNICOM
122.7 (CTAF)



CATEGORY	A	B	C	D
LPV DA	1950-¾	377 (400-¾)		NA
LNAV/VNAV DA	2060-1¼	487 (500-1¼)		NA
LNAV MDA	2020-¾	447 (500-¾)		NA
CIRCLING	2060-1¾	487 (500-1¾)		NA

NC-2, 22 OCT 2009 to 19 NOV 2009

NC-2, 22 OCT 2009 to 19 NOV 2009

REIL Rwy 32
 MIRL Rwy 14-32
 HIRL Rwy 1-19