

# ILS or LOC RWY 1

NORFOLK /KARL STEFAN MEMORIAL (OFK)

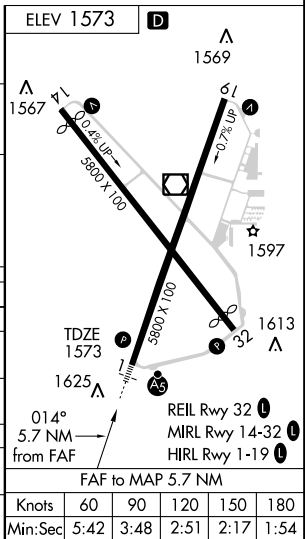
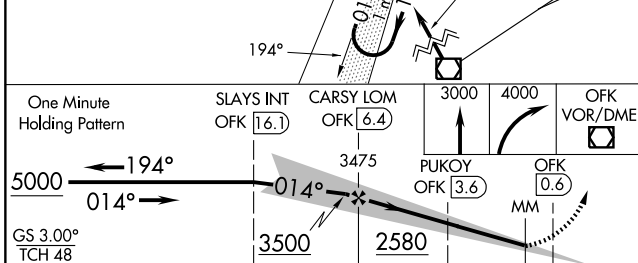
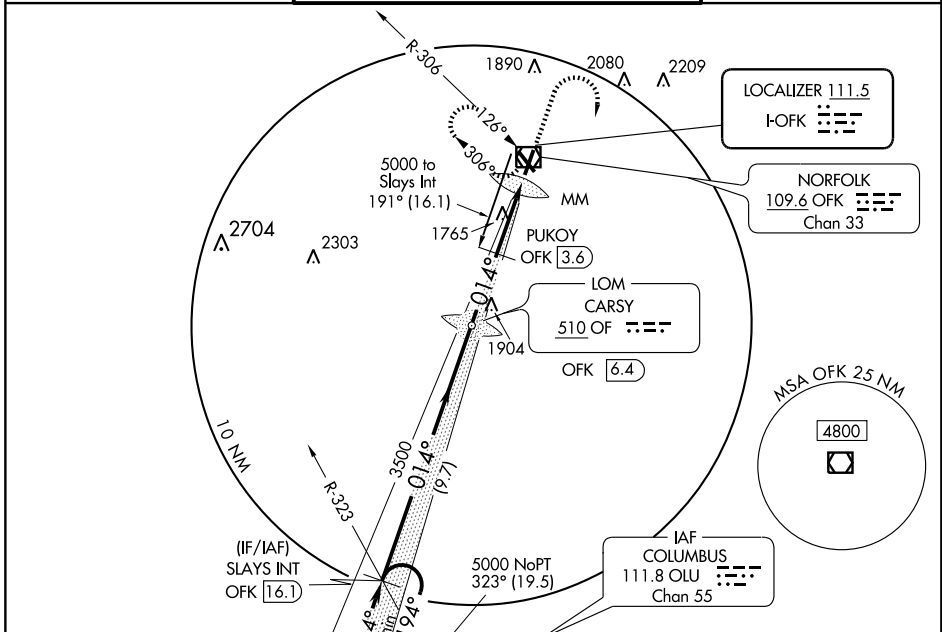
LOC I-OFK <b>111.5</b>	APP CRS <b>014°</b>	Rwy Idg <b>5800</b>	TDZE <b>1573</b>
		Apt Elev <b>1573</b>	

**NA** DME from OFK VOR/DME. If local altimeter setting not received, use Columbus Muni altimeter and increase all DAs/MDAs 100 feet.



**MISSED APPROACH:** Climb to 3000 then climbing right turn to 4000 direct OFK VOR/DME and hold.

ASOS <b>119.025</b>	COLUMBUS RADIO <b>122.15</b>	UNICOM <b>122.7 (CTAF)</b>
------------------------	---------------------------------	-------------------------------



CATEGORY	A	B	C	D	
S-ILS-1		1773-½	200 (200-½)	NA	
S-LOC-1	2160-½	587 (600-½)	2160-1	587 (600-1)	NA
CIRCLING	2160-1	587 (600-1)	2160-1½	587 (600-1½)	NA
DME MINIMUMS					
S-LOC-1	2020-½	447 (500-½)	2020-¾	447 (600-¾)	NA
CIRCLING	2080-1	507 (600-1)	2080-1½	507 (600-1½)	NA

# ILS or LOC RWY 1

NC-2, 22 OCT 2009 to 19 NOV 2009

NC-2, 22 OCT 2009 to 19 NOV 2009

Knots	60	90	120	150	180
Min:Sec	5:42	3:48	2:51	2:17	1:54