

# VOR/DME RWY 11

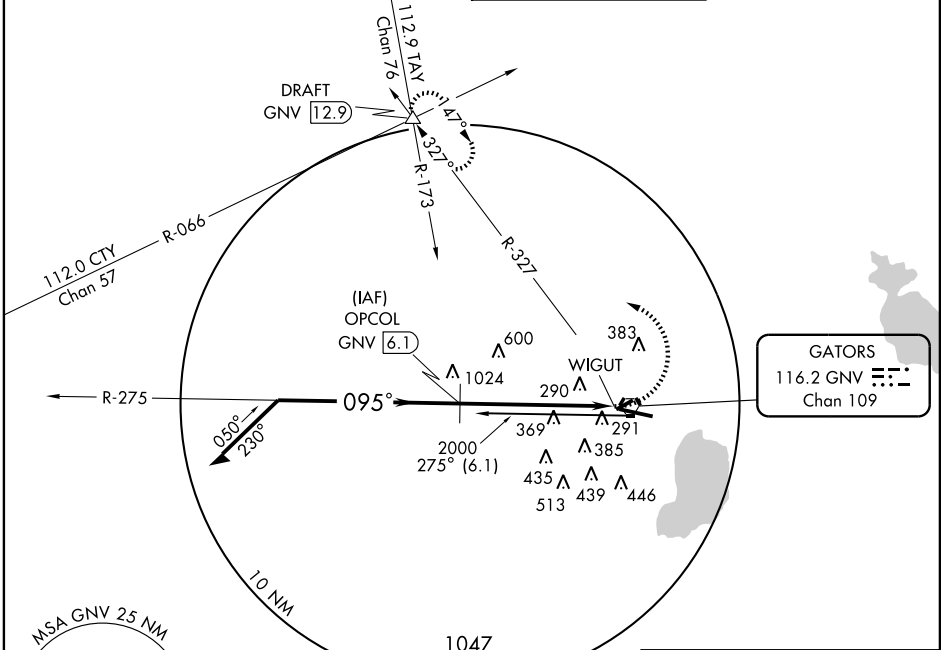
GAINESVILLE RGNL (GNV)

VORTAC GNV <b>116.2</b> Chan <b>109</b>	APP CRS <b>095°</b>	Rwy Idg <b>7504</b> TDZE <b>147</b> Apt Elev <b>152</b>
---	------------------------	---

**ASR**

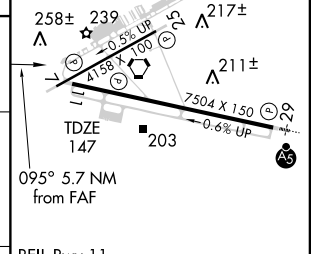
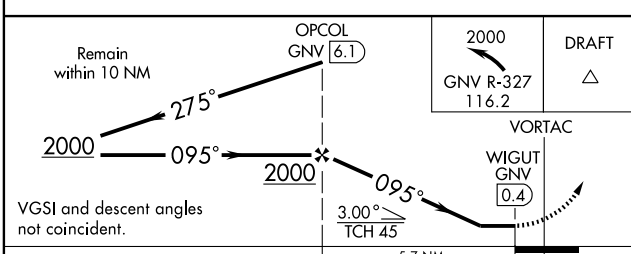
MISSED APPROACH: Climbing left turn to 2000 via GNV R-327 to DRAFT Int and hold.

ATIS <b>127.15</b>	JACKSONVILLE APP CON <b>118.175 338.25</b>	GAINESVILLE TOWER★ <b>119.55 (CTAF) 0 353.7</b>	GND CON <b>121.7</b>
-----------------------	---	--	-------------------------



SE-3, 22 OCT 2009 to 19 NOV 2009

SE-3, 22 OCT 2009 to 19 NOV 2009



CATEGORY	A	B	C	D
S-11	700-1 553 (600-1)		700-1½ 553 (600-1½)	700-1¾ 553 (600-1¾)
CIRCLING	700-1 548 (600-1)		700-1½ 548 (600-1½)	740-2 588 (600-2)

Knots	60	90	120	150	180
Min:Sec					