

VORTAC GNV <b>116.2</b> Chan <b>109</b>	APP CRS <b>233°</b>	Rwy Idg <b>4158</b> TDZE <b>144</b> Apt Elev <b>152</b>
---	------------------------	---

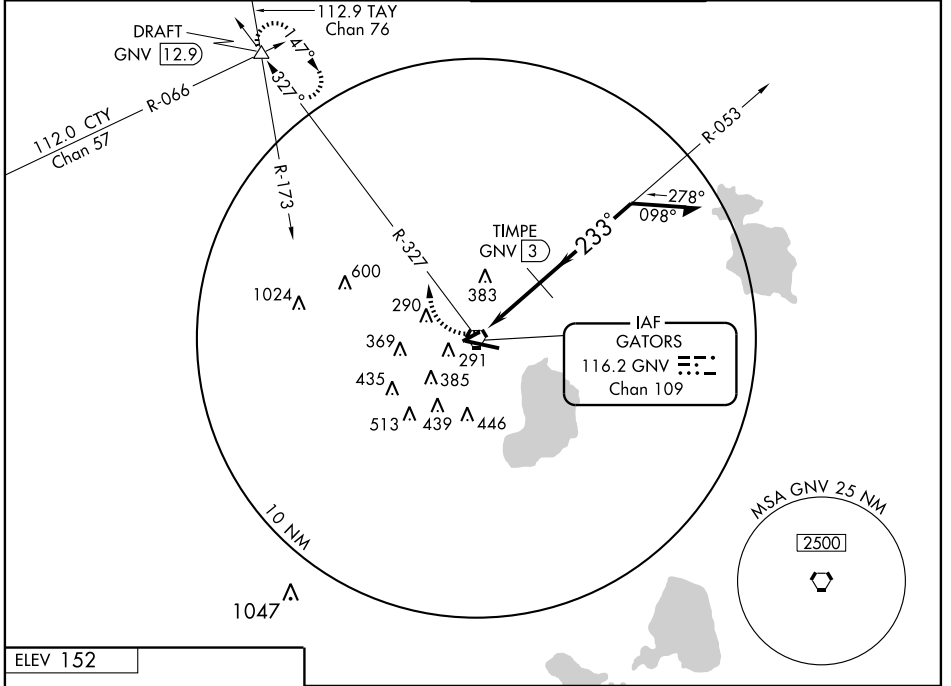
# VOR RWY 25

GAINESVILLE RGNL (GNV)

**ASR**

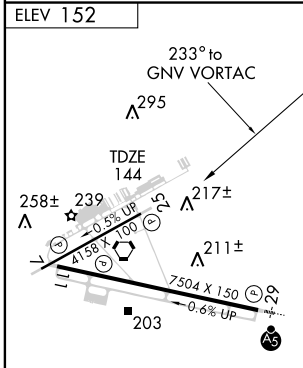
MISSED APPROACH: Climbing right turn to 2000 via GNV R-327 to DRAFT Int/12.9 DME and hold.

ATIS <b>127.15</b>	JACKSONVILLE APP CON <b>118.175 338.25</b>	GAINESVILLE TOWER★ <b>119.55 (CTAF) 0 353.7</b>	GND CON <b>121.7</b>
-----------------------	---	--	-------------------------



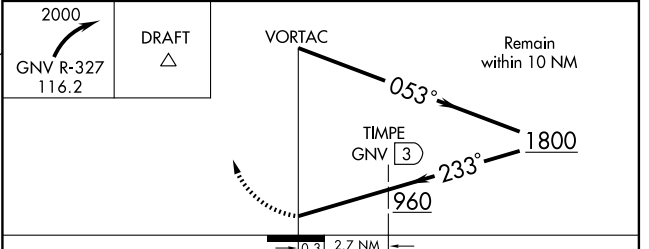
SE-3, 22 OCT 2009 to 19 NOV 2009

SE-3, 22 OCT 2009 to 19 NOV 2009



REIL Rwy 11  
MIRL Rwy 7-25  
HIRL Rwy 11-29

Knots	60	90	120	150	180
Min:Sec					



CATEGORY	A	B	C	D
S-25	960-1 816 (900-1)	960-1¼ 816 (900-1¼)	960-2½ 816 (900-2½)	960-2¾ 816 (900-2¾)
CIRCLING	960-1 808 (900-1)	960-1¼ 808 (900-1¼)	960-2½ 808 (900-2½)	960-2¾ 808 (900-2¾)
DME MINIMUMS				
S-25	620-1 476 (500-1)	620-1¼ 476 (500-1¼)	620-1½ 476 (500-1½)	620-1½ 476 (500-1½)
CIRCLING	620-1 468 (500-1)	620-1½ 468 (500-1½)	740-2 588 (600-2)	