

CLINTON, IOWA

AL-972 (FAA)

VORTAC CVA 113.8 Chan 85	APP CRS 218°	Rwy Idg TDZE Apt Elev	5204 708 708
--	------------------------	-----------------------------	---

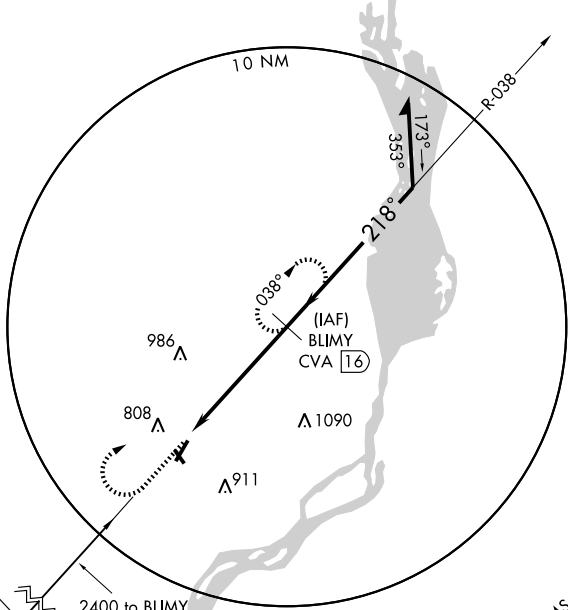
VOR/DME RWY 21

CLINTON MUNI (CWI)

		MISSED APPROACH: Climb to 2400 then right turn via CVA R-038 to BLIMY 16 DME and hold.	
AWOS-3 125.525	QUAD CITY APP CON * 125.95 257.8	CLNC DEL 118.5	UNICOM 122.8 (CTAF)

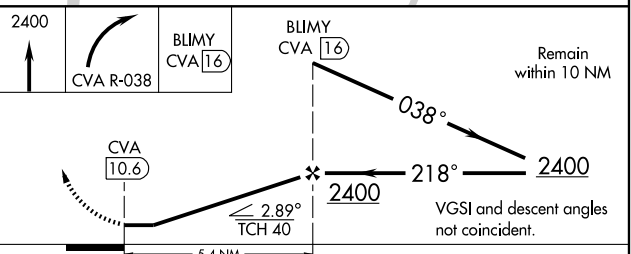
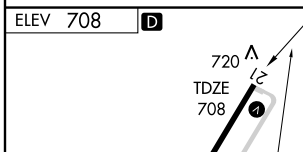
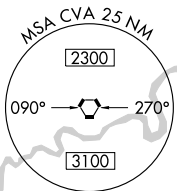
NC-3, 22 OCT 2009 to 19 NOV 2009

NC-3, 22 OCT 2009 to 19 NOV 2009



1272 A

DAVENPORT
113.8 CVA
Chan 85



CATEGORY	A	B	C	D
S-21	1200-1	492 (500-1)	1200-1¼ 492 (500-1¼)	NA
CIRCLING	1200-1	492 (500-1)	1200-1½ 492 (500-1½)	NA

REIL Rwy 14 and 21
MIRL Rwy 14-32
HIRL Rwy 3-21

CLINTON, IOWA
Amdt 9A 09071

41°50'N-90°20'W

CLINTON MUNI (CWI) VOR/DME RWY 21