

MALONE, NEW YORK

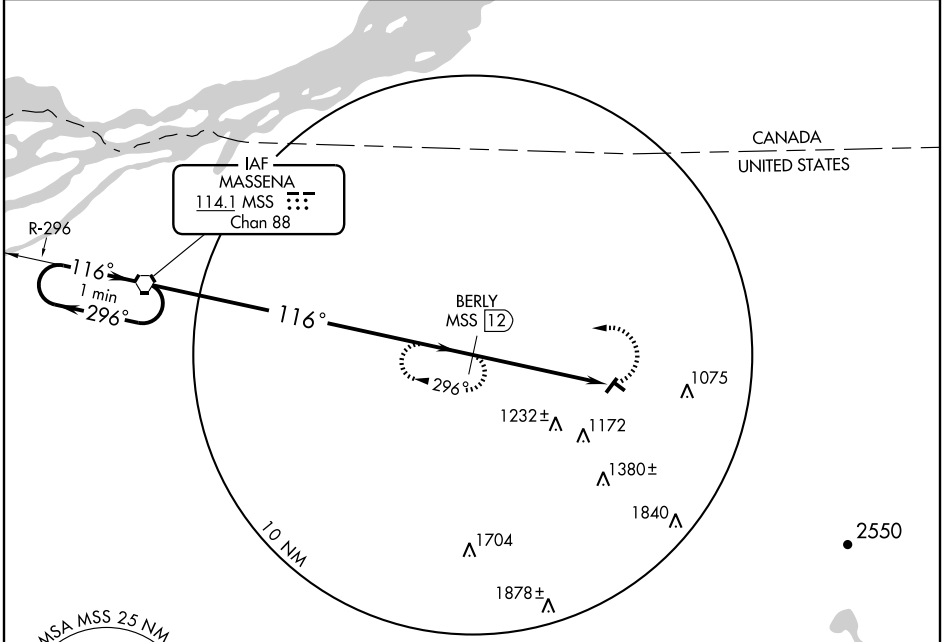
AL-971 (FAA)

VORTAC MSS <b>114.1</b> Chan <b>88</b>	APP CRS <b>116°</b>	Rwy Idg TDZE Apt Elev <b>N/A</b> <b>N/A</b> <b>790</b>
--	------------------------	---

**VOR/DME-A**  
MALONE-DUFORT (MAL)

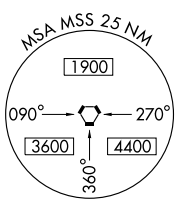
<p>▼ Use Massena Intl-Richards Field altimeter setting. ▲ NA</p>	<p>MISSED APPROACH: Climbing left turn to 2200 via MSS VORTAC R-116 to BERLY/12 DME and hold.</p>
--	---

<p>BOSTON CENTER <b>135.25 377.1</b></p>	<p>UNICOM <b>122.8 (CTAF)</b></p>
--	---------------------------------------

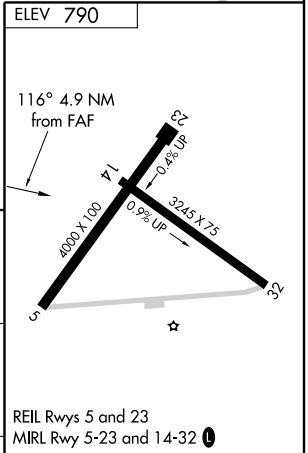
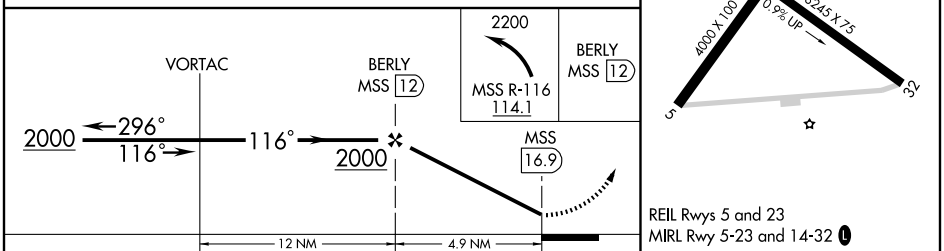


NE-2, 22 OCT 2009 to 19 NOV 2009

NE-2, 22 OCT 2009 to 19 NOV 2009



NoPT for arrival on MSS VORTAC airway radials 255 clockwise 314.



CATEGORY	A	B	C	D
CIRCLING	1580-1 790 (800-1)	1580-1¼ 790 (800-1¼)	1580-2¼ 790 (800-2¼)	NA
	12 NM		4.9 NM	

ELEV 790					
Knots	60	90	120	150	180
Min:Sec					

MALONE, NEW YORK  
Amdt 1 08045

44°51'N - 74°20'W

MALONE-DUFORT (MAL)  
**VOR/DME-A**