

MALONE, NEW YORK

AL-971 (FAA)

GPS RWY 5

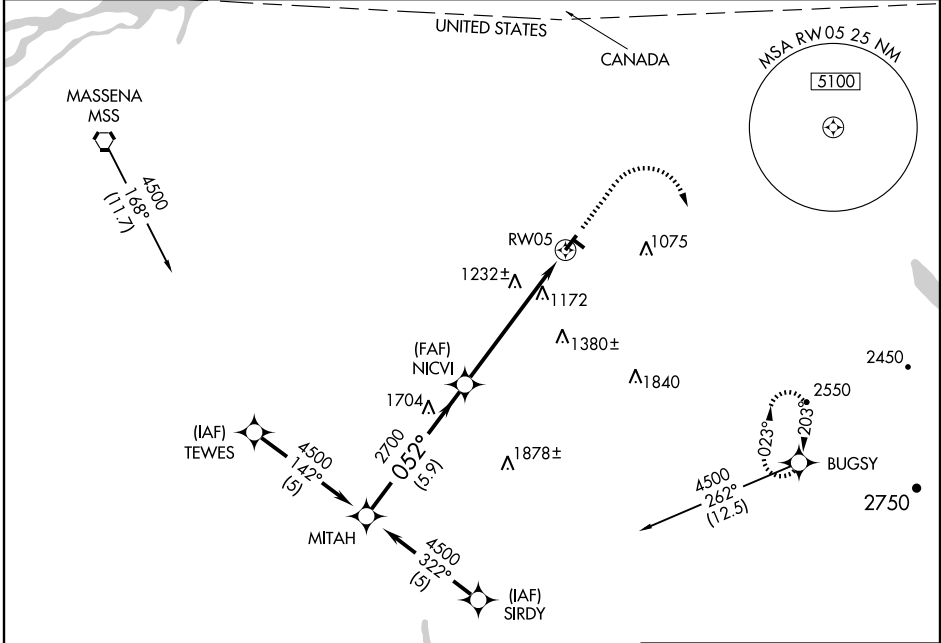
MALONE-DUFORT (MAL)

APP CRS	Rwy Idg	4000
052°	TDZE	770
	Apt Elev	790

▼ Use Massena Intl-Richards Field altimeter setting.
▲ NA MISSED APPROACH: Climb to 2500 then climbing right turn to 5000 direct BUGSY WP and hold.

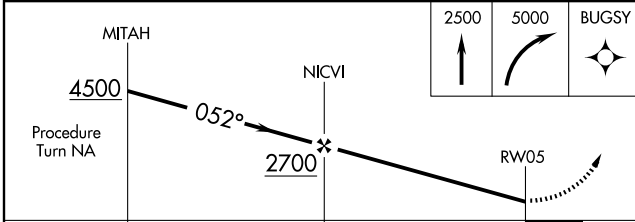
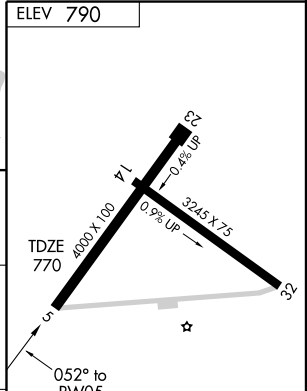
BOSTON CENTER
135.25 377.1

UNICOM
122.8 (CTAF) 0



NE-2, 22 OCT 2009 to 19 NOV 2009

NE-2, 22 OCT 2009 to 19 NOV 2009



CATEGORY	A	B	C	D
S-5	1680-1¼ 910 (900-1¼)		1680-2¾ 910 (900-2¾)	NA
CIRCLING	1680-1¼ 890 (900-1¼)		1680-2¾ 890 (900-2¾)	NA

REIL Rwy 5 and 23
 MIRL Rwy 5-23 and 14-32 0

MALONE, NEW YORK
Orig 08045

44°51'N - 74°20'W

MALONE-DUFORT (MAL) GPS RWY 5