

KEOKUK, IOWA

AL-970 (FAA)

WAAS CH 97304 W08A	APP CRS 084°	Rwy Idg TDZE Apt Elev	5500 671 671
--	------------------------	-----------------------------	---

RNAV (GPS) RWY 8

KEOKUK MUNI (EOK)

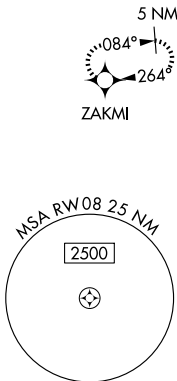
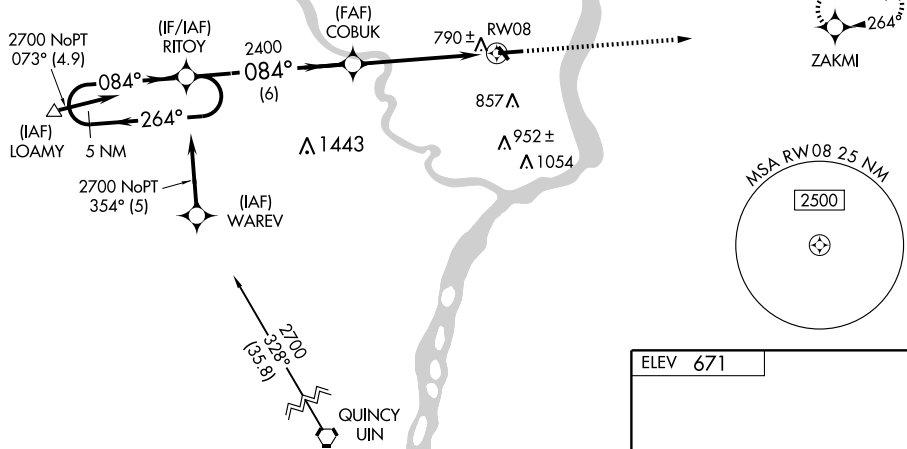
▽ DME/DME RNP -0.3 NA.
▲ For uncompensated Baro-VNAV systems, LNAV/VNAV NA below -16°C (4°F) or above 96°C (204°F).
 If local altimeter setting not received, use Burlington Rgnl altimeter setting and increase all DAs/MDAs 60 feet.
 VDP and Baro-VNAV NA when using Burlington Rgnl altimeter setting.

MISSED APPROACH: Climb to 2700 direct ZAKMI and hold.

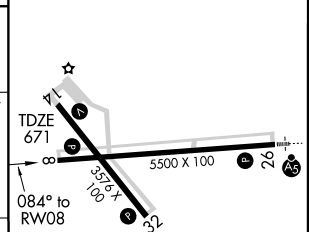
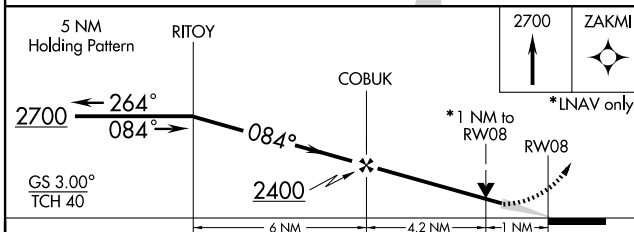
AWOS-3 118.375	KANSAS CITY CENTER 135.525 319.9	UNICOM 122.8 (CTAF) 0
--------------------------	--	---------------------------------

Procedure NA for arrivals at LOAMY via V10 southwestbound.
 Procedure NA for arrivals at UIN VORTAC on airway radials 281 CW 012.

NC-3, 22 OCT 2009 to 19 NOV 2009



ELEV 671



CATEGORY	A	B	C	D
LPV DA	921-1	250 (300-1)		NA
LNAV/VNAV DA	1059-1½	388 (400-1½)		NA
LNAV MDA	1040-1	369 (400-1)		NA
CIRCLING	1100-1½ 429 (500-1½)	1140-1½ 469 (500-1½)	1220-1½ 549 (600-1½)	NA

REIL Rwy 8, 14 and 32 0
 MRL Rwy 8-26 and 14-32 0

KEOKUK, IOWA
 Orig 06271

40°28'N-91°26'W

RNAV (GPS) RWY 8

NC-3, 22 OCT 2009 to 19 NOV 2009