

KEOKUK, IOWA

AL-970 (FAA)

RNAV (GPS) RWY 32

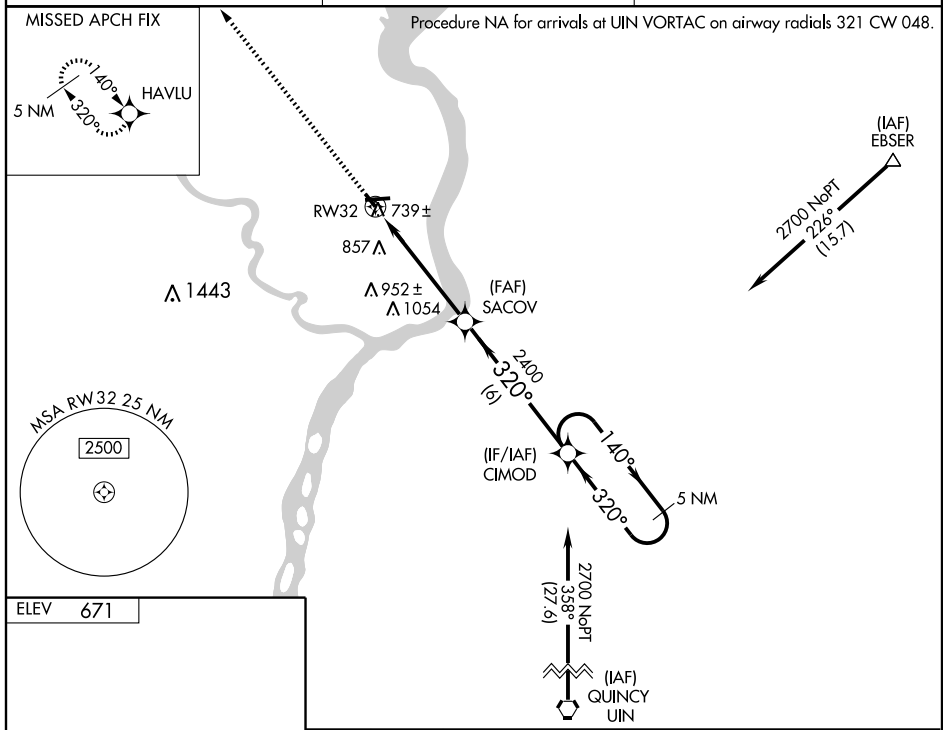
KEOKUK MUNI (EOK)

WAAS CH 40005 W32A	APP CRS 320°	Rwy Idg TDZE Apt Elev	3576 671 671
--	------------------------	-----------------------------	---

▼ DME/DME RNP -0.3 NA. Visibility reductions by helicopters NA.
 ▲ For uncompensated Baro-VNAV systems, LNAV/VNAV NA below -16°C (4°F) or above 96°C (204°F).
 When local altimeter setting not received, use Burlington Rgnl altimeter setting and increase all DAs/MDAs 60 feet, and increase LNAV/VNAV visibility 1/4 mile all Cats. Baro-VNAV NA when using Burlington Rgnl altimeter setting.

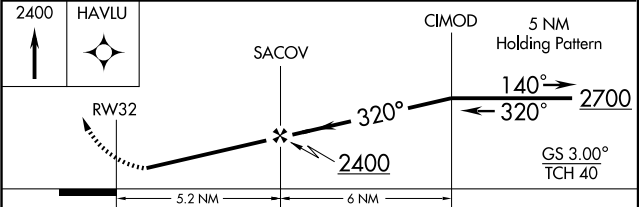
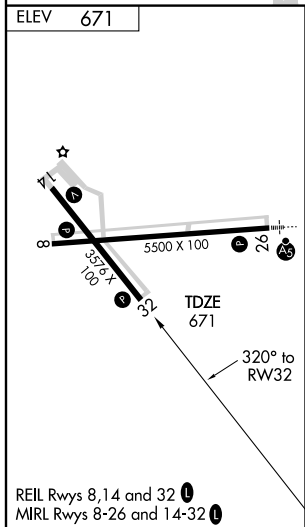
MISSED APPROACH: Climb to 2400 direct HAVLU and hold.

AWOS-3 118.375	KANSAS CITY CENTER 135.525 319.9	UNICOM 122.8 (CTAF) 0
--------------------------	--	---------------------------------



NC-3, 22 OCT 2009 to 19 NOV 2009

NC-3, 22 OCT 2009 to 19 NOV 2009



	A	B	C	D
CATEGORY	A	B	C	D
LPV DA	921-1	250 (300-1)		NA
LNAV/DA VNAV	1163-1¾	492 (500-1¾)		NA
LNAV MDA	1100-1	429 (500-1)	1100-1¼ 429 (500-1¼)	NA
CIRCLING	1180-1	509 (600-1)	1220-1½ 549 (600-1½)	NA

KEOKUK, IOWA
 Orig-A 08185

40°28'N-91°26'W

RNAV (GPS) RWY 32