

KEOKUK, IOWA

AL-970 (FAA)

|  |                        |   |
|--|------------------------|---|
| WAAS<br>CH <b>90104</b><br><b>W14A</b> | APP CRS<br><b>140°</b> | Rwy Idg <b>3576</b><br>TDZE <b>671</b><br>Apt Elev <b>671</b> |
|--|------------------------|---|

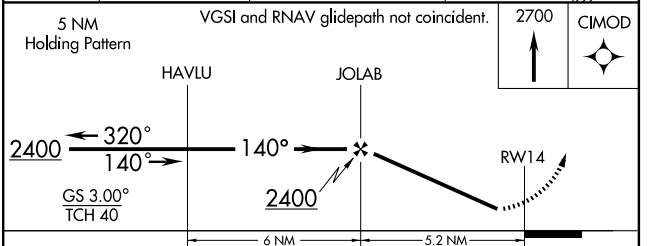
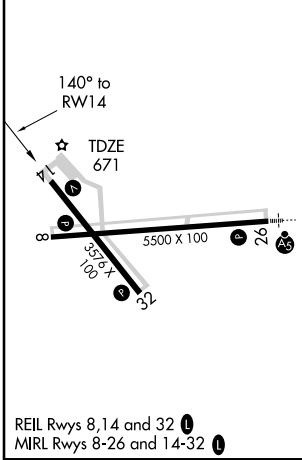
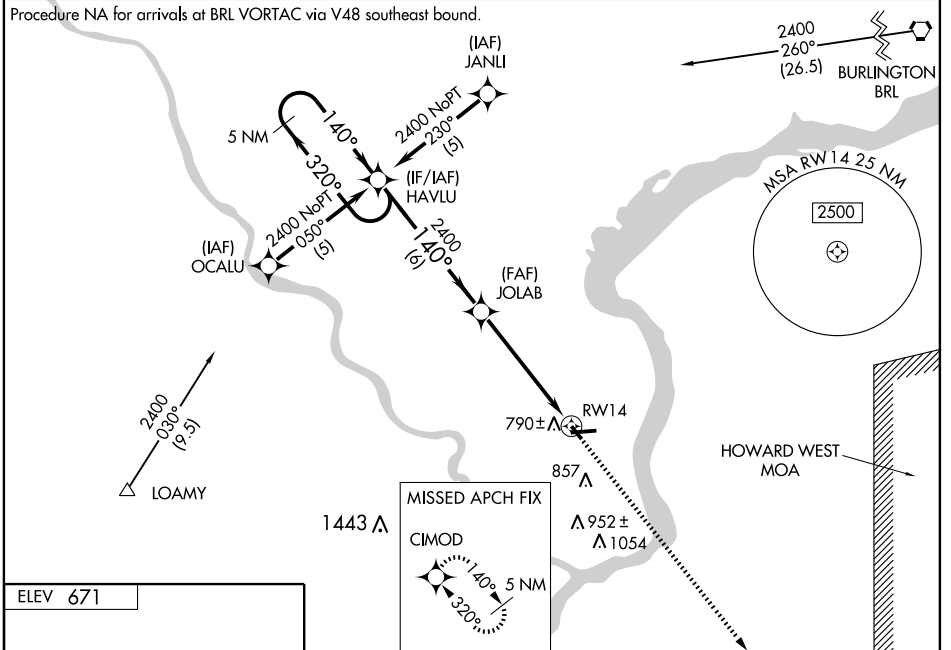
# RNAV (GPS) RWY 14

KEOKUK MUNI (EOK)

**⚠** DME/DME RNP -0.3 NA. Visibility reduction by helicopters NA.  
**⚠** For uncompensated Baro-VNAV systems, LNAV/VNAV NA below -16°C (4°F) or above 96°C (204°F).  
 If local altimeter setting not received, use Burlington Rgnl altimeter setting and increase all DAs/MDAs 60 feet.  
 Baro-VNAV NA when using Burlington Rgnl altimeter setting.

MISSED APPROACH: Climb to 2700 direct CIMOD and hold.

|                          |  |                               |
|--------------------------|--|-------------------------------|
| AWOS-3<br><b>118.375</b> | KANSAS CITY CENTER<br><b>135.525 319.9</b> | UNICOM<br><b>122.8 (CTAF)</b> |
|--------------------------|--|-------------------------------|



| CATEGORY     | A                       | B                       | C                       | D  |
|--------------|-------------------------|-------------------------|-------------------------|----|
| LPV DA       | 949-1                   | 278 (300-1)             |                         | NA |
| LNAV/VNAV DA | 1040-1¼                 | 369 (400-1¼)            |                         | NA |
| LNAV MDA     | 1040-1                  | 369 (400-1)             |                         | NA |
| CIRCLING     | 1100-1¼<br>429 (500-1¼) | 1140-1¼<br>469 (500-1¼) | 1220-1½<br>549 (600-1½) | NA |

KEOKUK, IOWA  
Orig 06271

40°28'N-91°26'W

# RNAV (GPS) RWY 14

NC-3, 22 OCT 2009 to 19 NOV 2009

NC-3, 22 OCT 2009 to 19 NOV 2009