

KEOKUK, IOWA

AL-970 (FAA)

NDB RWY 26

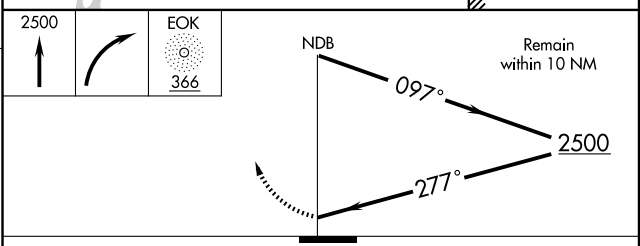
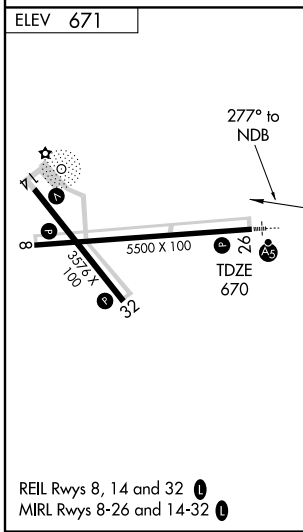
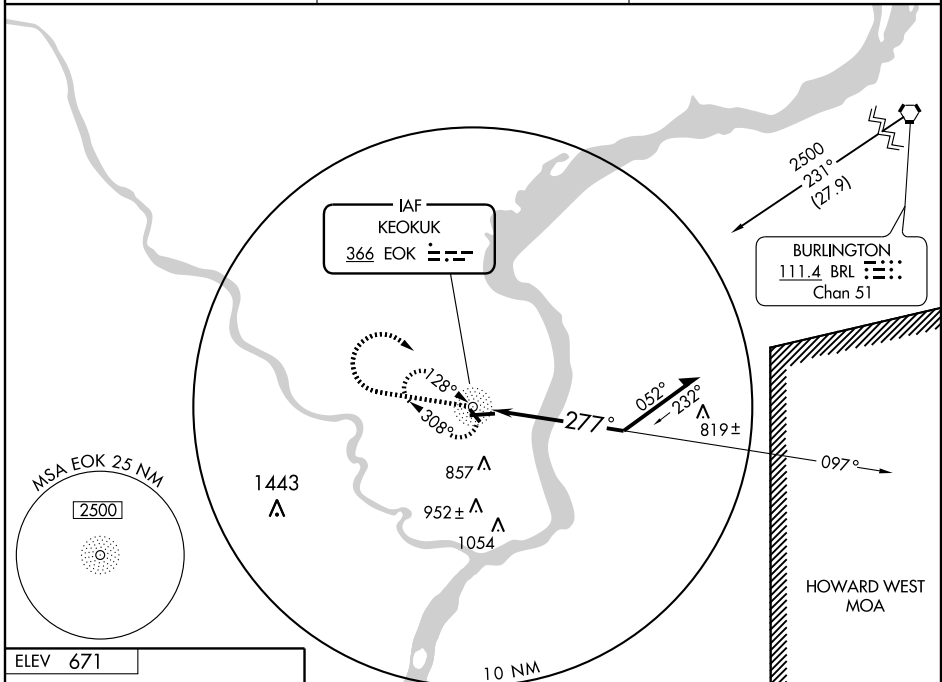
KEOKUK MUNI (EOK)

NDB EOK 366	APP CRS 277°	Rwy Idg TDZE Apt Elev	5500 670 671
-----------------------	------------------------	-----------------------------	---

⚠ If local altimeter setting not received, use Burlington Rgnl altimeter setting and increase all MDAs 60 feet.

MALSR
MISSED APPROACH: Climb to 2500 then right turn direct EOK NDB and hold.

AWOS-3 118.375	KANSAS CITY CENTER 135.525 319.9	UNICOM 122.8 (CTAF)
--------------------------	--	-------------------------------



CATEGORY	A	B	C	D
S-26	1180-3/4	510 (600-3/4)	1180-1 510 (600-1)	NA
CIRCLING	1180-1 509 (600-1)	1200-1 529 (600-1)	1220-1 1/2 549 (600-1 1/2)	NA

KEOKUK, IOWA
Amdt 1 09071

40°28'N-91°26'W

KEOKUK MUNI (EOK)
NDB RWY 26

NC-3, 22 OCT 2009 to 19 NOV 2009

NC-3, 22 OCT 2009 to 19 NOV 2009