

KEOKUK, IOWA

AL-970 (FAA)

NDB EOK 366	APP CRS 128°	Rwy Idg TDZE Apt Elev	3576 671 671
-----------------------	------------------------	-----------------------------	---

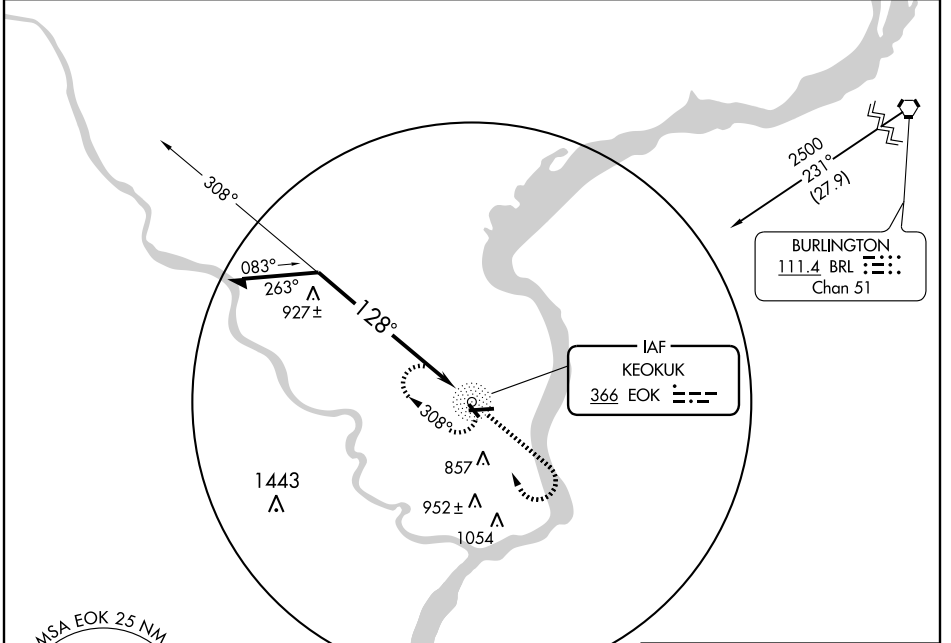
NDB RWY 14

KEOKUK MUNI (EOK)

⚠ If local altimeter setting not received, use Burlington Rgnl altimeter setting and increase all MDAs 60 feet.

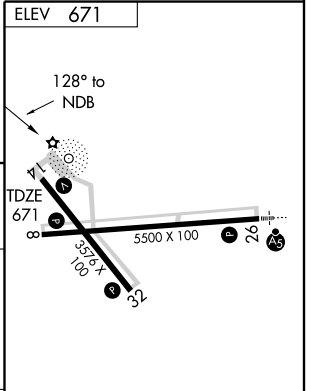
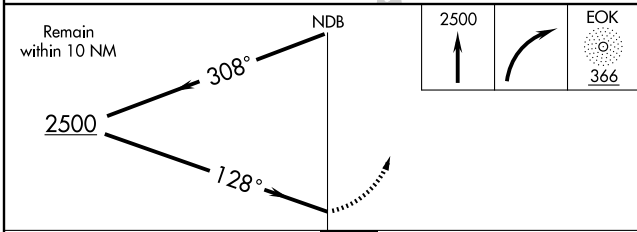
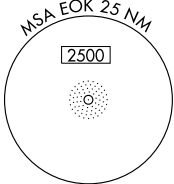
⚠ MISSED APPROACH: Climb to 2500 then right turn direct EOK NDB and hold.

AWOS-3 118.375	KANSAS CITY CENTER 135.525 319.9	UNICOM 122.8 (CTAF) 📻
--------------------------	--	--



NC-3, 22 OCT 2009 to 19 NOV 2009

NC-3, 22 OCT 2009 to 19 NOV 2009



CATEGORY	A	B	C	D
S-14	1280-1	609 (700-1)	1280-1¾ 609 (700-1¾)	NA
CIRCLING	1280-1	609 (700-1)	1280-1¾ 609 (700-1¾)	NA

REIL Rwy 8, 14 and 32 **📻**
MIRL Rwy 8-26 and 14-32 **📻**

KEOKUK, IOWA
Amdt 12 09071

40°28'N-91°26'W

KEOKUK MUNI (EOK)

NDB RWY 14