

KEOKUK, IOWA

AL-970 (FAA)

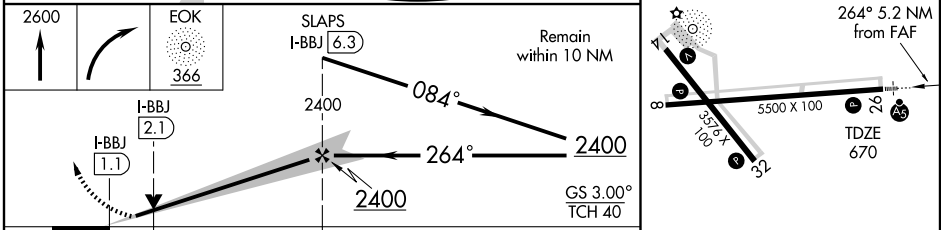
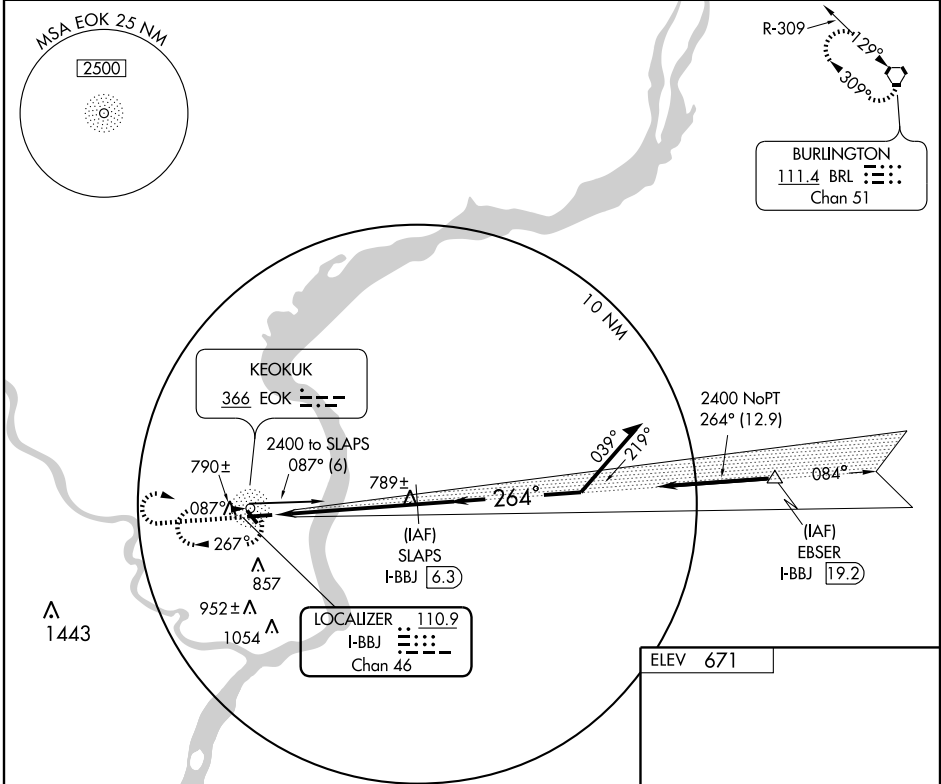
ILS or LOC/DME RWY 26

KEOKUK MUNI (EOK)

LOC/DME I-BBJ 110.9 Chan 46	APP CRS 264°	Rwy Idg 5500 TDZE 670 Apt Elev 671
--	------------------------	---

<p>▼ If local altimeter setting not received, use Burlington altimeter setting and increase all DAs/MDAs 60 feet. Visibility reductions by helicopters NA.</p> <p>▲ NA VDP NA when using Burlington altimeter setting. ADF required.</p>	<p>MALSR</p>	<p>MISSED APPROACH: Climb to 2600 then right turn direct EOK NDB and hold.</p>
--	--------------	--

AWOS-3 118.375	KANSAS CITY CENTER 135.525 319.9	UNICOM 122.8 (CTAF) 0
--------------------------	--	---------------------------------



CATEGORY	A	B	C	D
S-ILS 26	870-1/2	200 (200-1/2)		NA
S-LOC 26	1040-1/2	370 (400-1/2)		NA
CIRCLING	1100-1 429 (500-1)	1140-1 469 (500-1)	1220-1/2 549 (600-1/2)	NA

ELEV 671

REIL Rwy 8, 14 and 32 0

MIRL Rwy 8-26 and 14-32 0

NC-3, 22 OCT 2009 to 19 NOV 2009

NC-3, 22 OCT 2009 to 19 NOV 2009

KEOKUK, IOWA
Orig 09071

40°28'N-91°26'W

ILS or LOC/DME RWY 26

KEOKUK MUNI (EOK)