

BROOKINGS, SOUTH DAKOTA

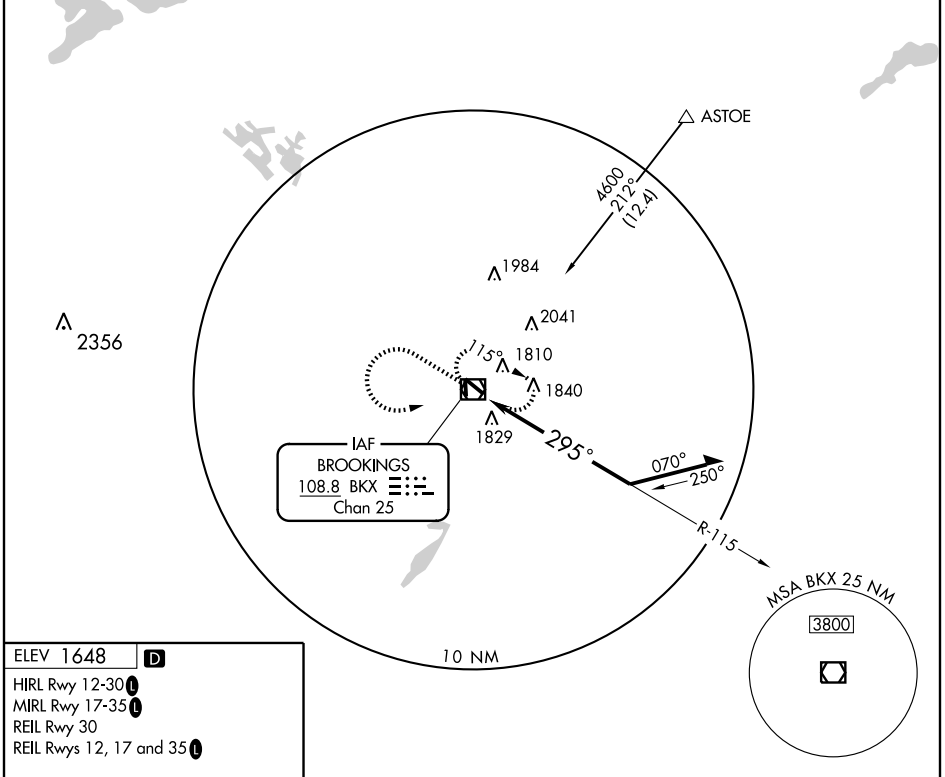
AL-969 (FAA)

VOR/DME BKK <b>108.8</b> Chan 25	APP CRS <b>295°</b>	Rwy Idg TDZE Apt Elev <b>5231</b> <b>1629</b> <b>1648</b>
--	------------------------	--

**VOR RWY 30**  
BROOKINGS RGNL (BKK)

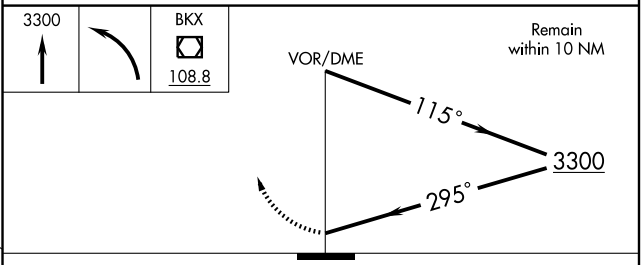
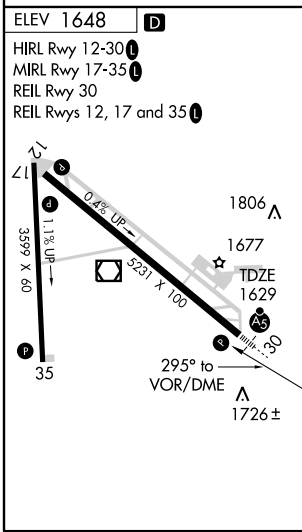
<b>T</b>	MALSR 	MISSED APPROACH: Climb to 3300 then left turn direct BKK VOR/DME and hold.
----------	-----------	--

AWOS-3 <b>108.8</b>	HURON RADIO <b>122.65</b>	UNICOM <b>123.0 (CTAF)</b>
------------------------	------------------------------	-------------------------------



NC-1, 22 OCT 2009 to 19 NOV 2009

NC-1, 22 OCT 2009 to 19 NOV 2009



CATEGORY	A	B	C	D
S-30	2660-3/4 1031 (1100-3/4)	2660-1 1031 (1100-1)	2660-2 1/2	1031 (1100-2 1/2)
CIRCLING	2660-1 1/4 1012 (1100-1 1/4)	2660-1 1/2 1012 (1100-1 1/2)	2660-3	1012 (1100-3)

BROOKINGS, SOUTH DAKOTA  
Amdt 11A 09295

44°18'N - 96°49'W

BROOKINGS RGNL (BKK)  
**VOR RWY 30**