


WAAS Chan <b>69399</b> W30A	APP CRS <b>303°</b>	Rwy Idg TDZE <b>1629</b> Apt Elev <b>1648</b>	<b>5231</b>
-----------------------------------	------------------------	---	-------------

# RNAV (GPS) RWY 30

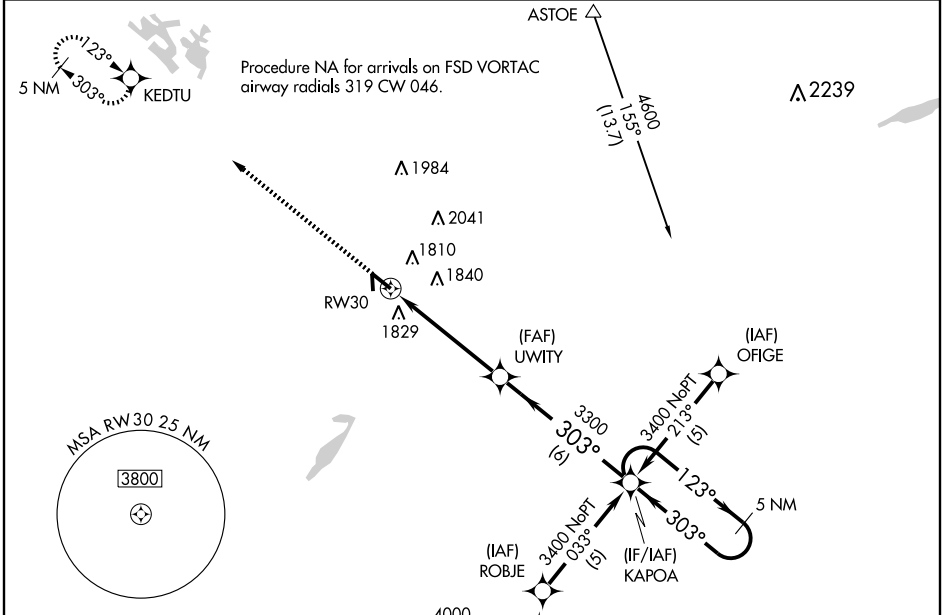
BROOKINGS RGNL (BKK)

**▼** If local altimeter setting not received, use Pipestone Muni altimeter setting and increase all DAs/MDAs 100 feet.

**▲** Baro-VNAV NA below -18°C (0°F). DME/DME RNP-0.3 NA. VDP and Baro-VNAV NA when using Pipestone Muni altimeter setting. For inoperative MALSRL increase LPV all Cats visibility to 1.

**MALSRL**  
 MISSED APPROACH: Climb to 3400 direct KEDTU and hold.

AWOS-3 <b>108.8</b>	HURON RADIO <b>122.65</b>	UNICOM <b>123.0</b> (CTAF) 
------------------------	------------------------------	---



ELEV 1648 **D**

TDZE 1629

MSL 1726±

0.4% UP

1.1% UP


3.5% UP


5231 X 100

3599 X 60


303° to RW30

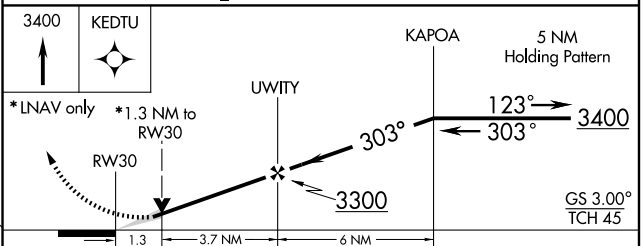
1726±

HIRL Rwy 12-30 

MIRL Rwy 17-35 

REIL Rwy 30

REIL Rwy 12, 17 and 35 



CATEGORY	A	B	C	D
LPV DA	1934-1/2 305 (300-1/2)			
LNAV/VNAV DA	2138-1/4 509 (500-1/4)			
LNAV MDA	2080-1/2 451 (500-1/2)	2080-3/4 451 (500-3/4)		2080-1 451 (500-1)
CIRCLING	2140-1 3/4 492 (500-1 3/4)		2200-2 552 (600-2)	

NC-1, 22 OCT 2009 to 19 NOV 2009

NC-1, 22 OCT 2009 to 19 NOV 2009