

VOR/DME RWY 19

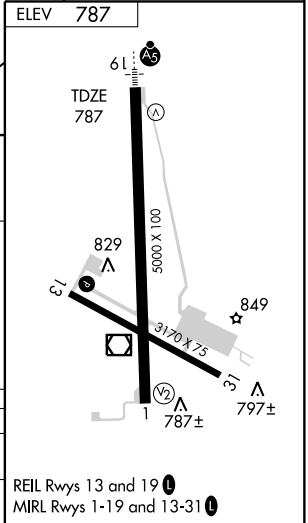
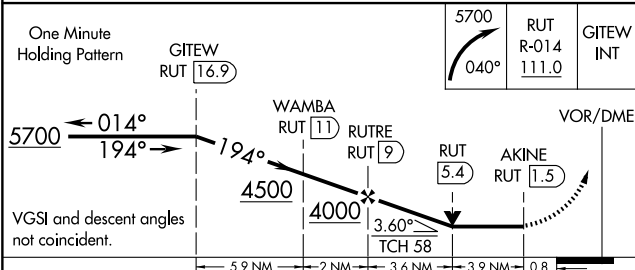
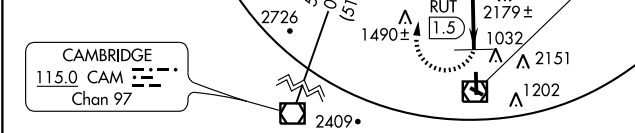
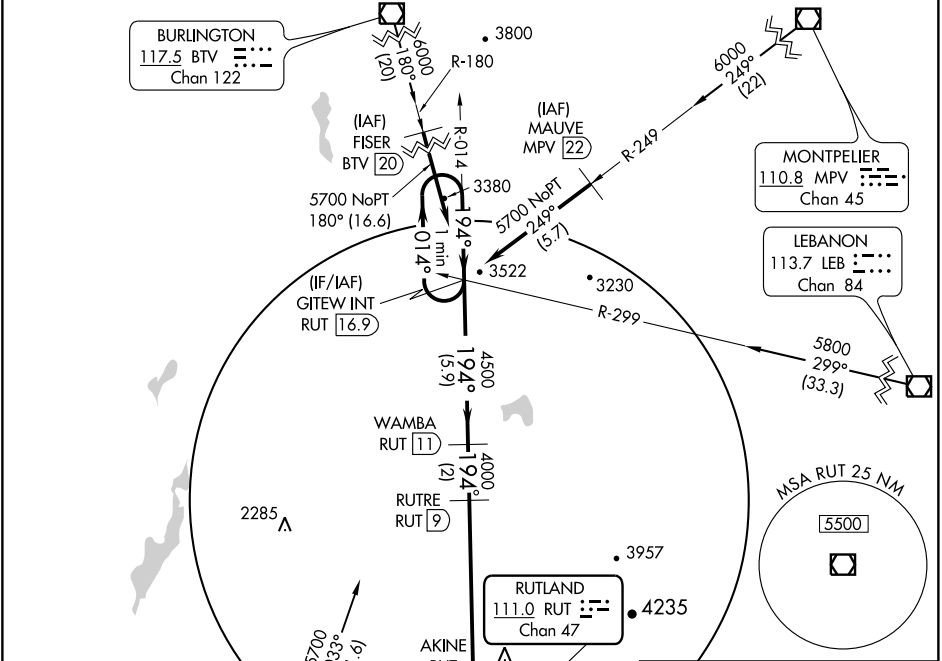
RUTLAND-SOUTHERN VERMONT RGNL (RUT)

VOR/DME RUT 111.0 Chan 47	APP CRS 194°	Rwy Idg 5000
	TDZE 787	
	Apt Elev 787	

⚠ Circling NA east of Rwy 19 and 31. When local altimeter setting not received, use Springfield altimeter setting and increase all MDA 500 feet. VDP NA when using Springfield altimeter setting. Inoperative table does not apply to S-19 A and B.

MALS MISSED APPROACH: Climbing right turn to 5700 via heading 040° and via RUT VOR/DME R-014 to GITEW INT/RUT 16.9 DME and hold.

AWOS-3 118.375	BOSTON CENTER 135.7 282.2	UNICOM 122.8 (CTAF)
--------------------------	-------------------------------------	-------------------------------



CATEGORY	A	B	C	D
S-19	2560-1¼ 1773 (1800-1¼)	2560-1½ 1773 (1800-1½)	2560-2½ 1773 (1800-2½)	NA
CIRCLING	2560-1¼ 1773 (1800-1¼)	2560-1½ 1773 (1800-1½)	2560-3 1773 (1800-3)	NA

NE-1, 22 OCT 2009 to 19 NOV 2009

NE-1, 22 OCT 2009 to 19 NOV 2009