

VOR/DME RUT <b>111.0</b> Chan <b>47</b>	APP CRS <b>017°</b>	Rwy Idg <b>5000</b> TDZE <b>787</b> Apt Elev <b>787</b>
---	------------------------	---

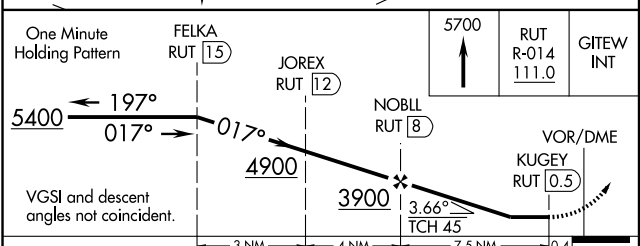
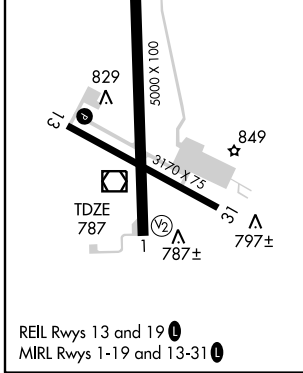
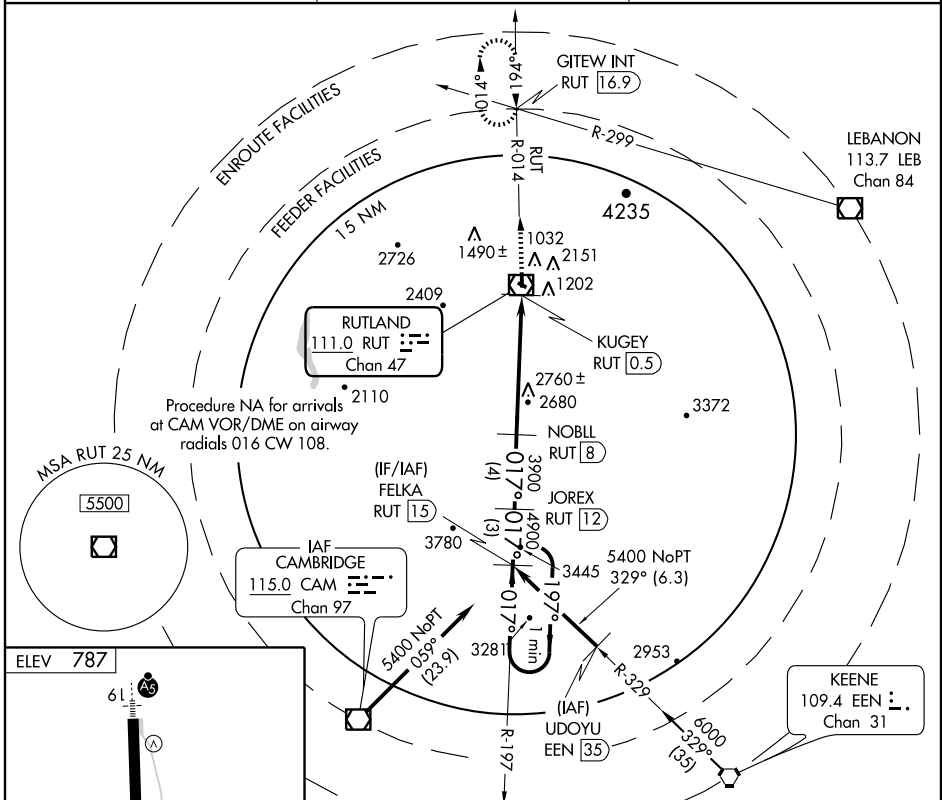
# VOR/DME RWY 1

RUTLAND-SOUTHERN VERMONT RGNL (RUT)

**NA** Straight-in minimums NA at night. Circling NA east of Rwy 19 and 31. Visibility reduction by helicopters NA. When local altimeter setting not received, use Springfield altimeter setting and increase all MDA 500 feet.

MISSED APPROACH: Climb to 5700 via RUT VOR/DME R-014 to GITEW INT/ RUT 16.9 DME and hold.

AWOS-3 <b>118.375</b>	BOSTON CENTER <b>135.7 282.2</b>	UNICOM <b>122.8 (CTAF)</b>
--------------------------	-------------------------------------	-------------------------------



CATEGORY	A	B	C	D
S-1	3120 - 1¼ 2333 (2400-1¼)	3120 - 1½ 2333 (2400-1½)	3120 - 3 2333 (2400-3)	NA
CIRCLING	3120 - 1¼ 2333 (2400-1¼)	3120 - 1½ 2333 (2400-1½)	3120 - 3 2333 (2400-3)	NA

NE-1, 22 OCT 2009 to 19 NOV 2009

NE-1, 22 OCT 2009 to 19 NOV 2009