


RNAV (GPS) RWY 19

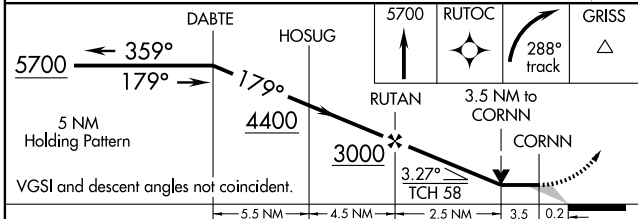
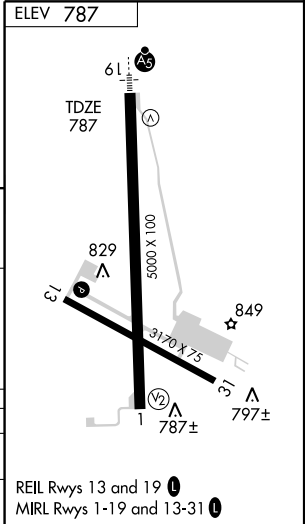
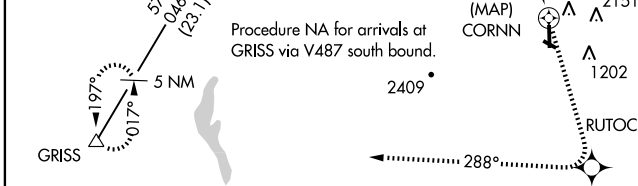
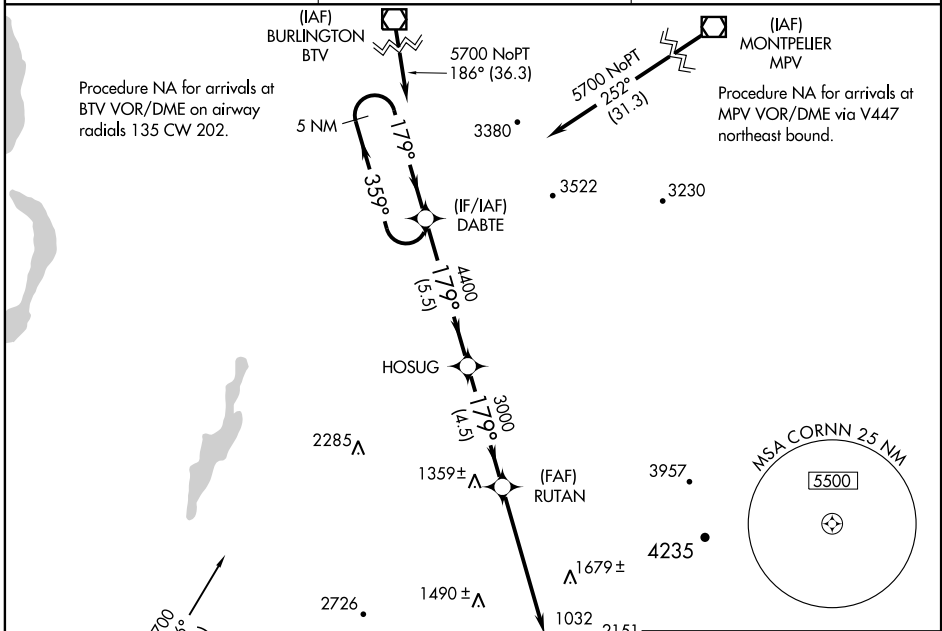
RUTLAND-SOUTHERN VERMONT RGNL (RUT)

APP CRS 179°	Rwy Idg 5000
	TDZE 787
	Apt Elev 787

⚠ Inoperative table does not apply. Circling NA east of Rwy 19 and 31. DME/DME RNP-0.3 NA. When local altimeter setting not received, use Springfield altimeter setting and increase all MDA 500 feet. VDP NA when using Springfield altimeter setting.

MALSR
 MISSED APPROACH: Climb to 5700 direct RUTOC and right turn via 288° track to GRISS and hold, continue climb-in-hold to 5700.

AWOS-3 118.375	BOSTON CENTER 135.7 282.2	UNICOM 122.8 (CTAF)
--------------------------	-------------------------------------	-------------------------------



CATEGORY	A	B	C	D
RNAV MDA	2220-1¼ 1433 (1500-1¼)	2220-1½ 1433 (1500-1½)	2220-3 1433 (1500-3)	NA
CIRCLING	2220-1¼ 1433 (1500-1¼)	2220-1½ 1433 (1500-1½)	2220-3 1433 (1500-3)	NA

REIL Rwy 13 and 19
MRL Rwy 1-19 and 13-31

NE-1, 22 OCT 2009 to 19 NOV 2009

NE-1, 22 OCT 2009 to 19 NOV 2009