

# RNAV (GPS) RWY 1

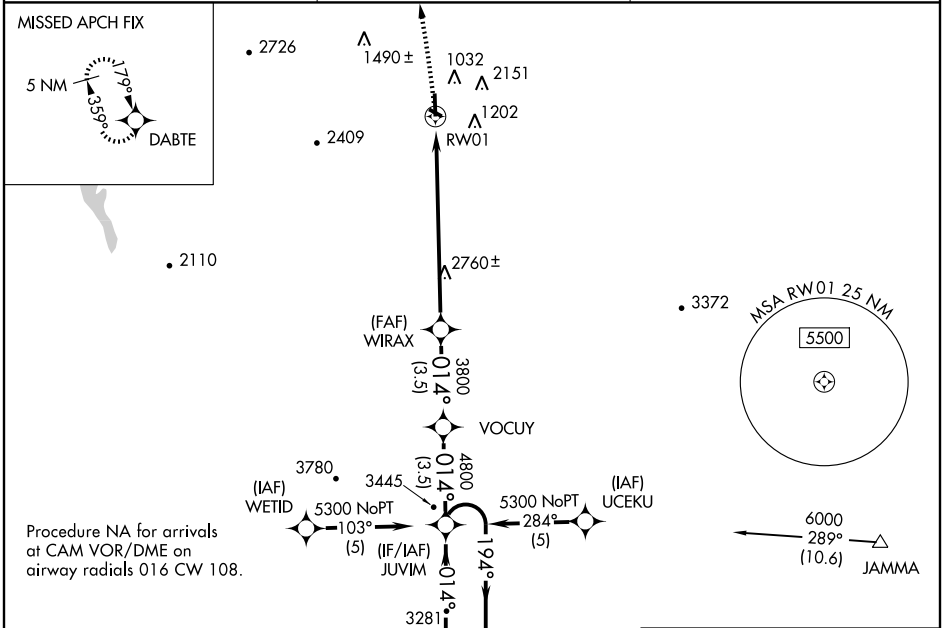
RUTLAND-SOUTHERN VERMONT RGNL (RUT)

|                        |                        |
|------------------------|------------------------|
| APP CRS<br><b>014°</b> | Rwy Idg<br><b>5000</b> |
|                        | TDZE<br><b>787</b>     |
|                        | Apt Elev<br><b>787</b> |

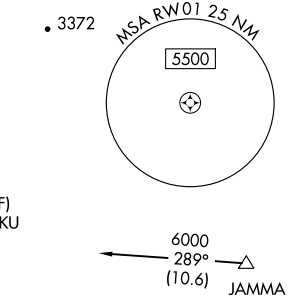
▼ Straight-in minimums NA at night. Circling NA east of Rwy 19 and 31.  
▲ DME/DME RNP-0.3 NA. Visibility reduction by helicopters NA.  
 When local altimeter setting not received, use Springfield altimeter setting and increase all MDA 500 feet.

MISSED APPROACH: Climbing left turn to 5700 direct DABTE and hold.

|                          |                                     |                               |
|--------------------------|-------------------------------------|-------------------------------|
| AWOS-3<br><b>118.375</b> | BOSTON CENTER<br><b>135.7 282.2</b> | UNICOM<br><b>122.8 (CTAF)</b> |
|--------------------------|-------------------------------------|-------------------------------|

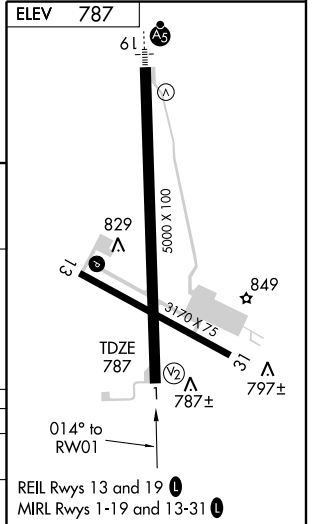
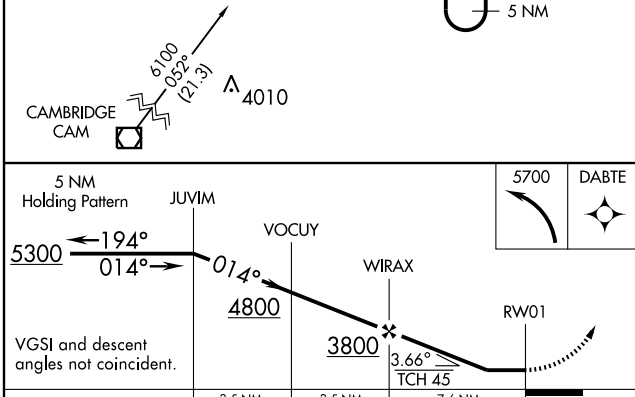


Procedure NA for arrivals at CAM VOR/DME on airway radials 016 CW 108.



NE-1, 22 OCT 2009 to 19 NOV 2009

NE-1, 22 OCT 2009 to 19 NOV 2009



| CATEGORY | A                         | B                         | C                       | D  |
|----------|---------------------------|---------------------------|-------------------------|----|
| RNAV MDA | 3100-1¼<br>2313 (2400-1¼) | 3100-1½<br>2313 (2400-1½) | 3100-3<br>2313 (2400-3) | NA |
| CIRCLING | 3100-1¼<br>2313 (2400-1¼) | 3100-1½<br>2313 (2400-1½) | 3100-3<br>2313 (2400-3) | NA |

REIL Rwy 13 and 19  
MRL Rwy 1-19 and 13-31