

LOC Z RWY 19

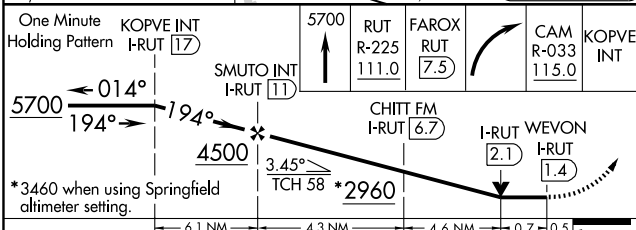
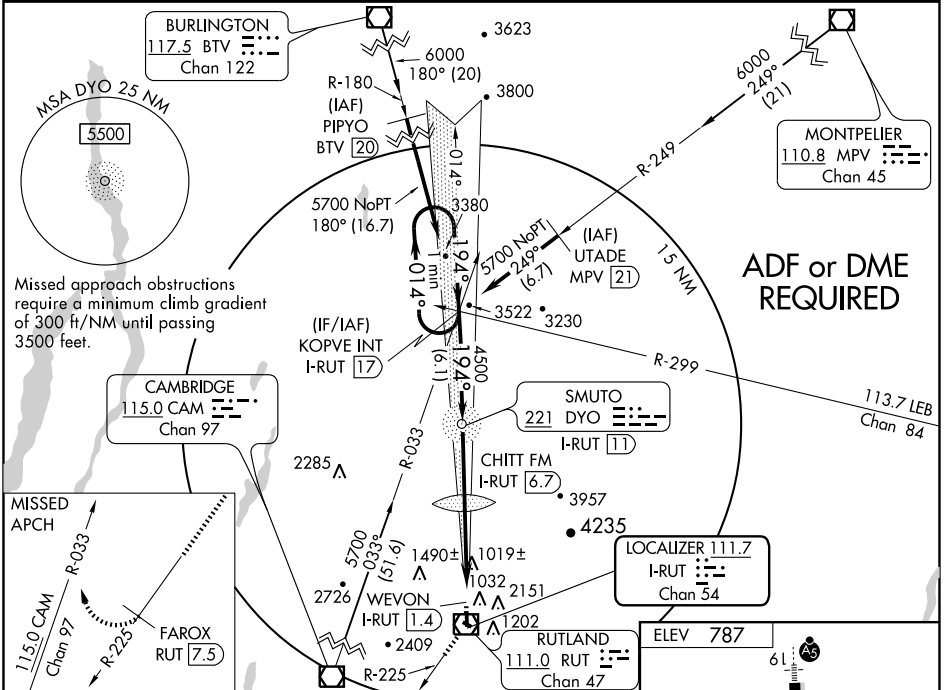
RUTLAND-SOUTHERN VERMONT RGNL (RUT)

LOC/DME I-RUT 111.7 Chan 54	APP CRS 194°	Rwy Idg 5000
		TDZE 787
		Apt Elev 787

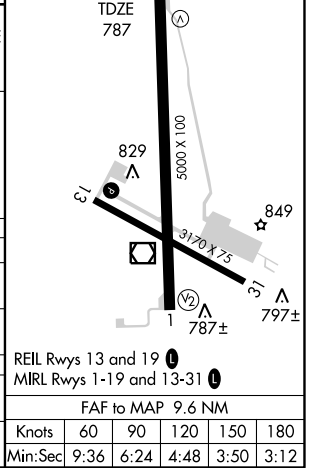
NA Circling NA east of Rwy 19 and 31. DME required. When local altimeter setting not received, use Springfield altimeter setting and increase all MDA 500 feet. CHITT FIX Straight-in minimums NA when using Springfield altimeter setting. Inoperative table does not apply to S-19 Cat A and B. For inoperative MALS, increase CHITT FIX Minimums S-19 Cat A and B visibility 1/4 mile. VDP NA when using Springfield altimeter setting.

MALS MISSED APPROACH: Climb to 5700 via RUT VOR/DME and RUT VOR/DME R-225 to FAROX/RUT 7.5 DME and right turn via CAM VOR/DME R-033 to KOPVE INT/I-RUT 17 DME and hold.

AWOS-3 118.375	BOSTON CENTER 135.7 282.2	UNICOM 122.8 (CTAF)
--------------------------	-------------------------------------	-------------------------------



CATEGORY	A	B	C	D
S-19	2960-1¼ 2173 (2200-1¼)	2960-1½ 2173 (2200-1½)	2960-2½ 2173 (2200-2½)	NA
CIRCLING	2960-1¼ 2173 (2200-1¼)	2960-1½ 2173 (2200-1½)	2960-3 2173 (2200-3)	NA
CHITT FIX MINIMUMS				
S-19	1280-¾ 493 (500-¾)			NA
CIRCLING	1900-1¼ 1113 (1200-1¼)	1900-1½ 1113 (1200-1½)	1960-3 1173 (1200-3)	NA



NE-1, 22 OCT 2009 to 19 NOV 2009

NE-1, 22 OCT 2009 to 19 NOV 2009

LOC Z RWY 19

REIL Rwy 13 and 19	
MIRL Rwy 1-19 and 13-31	
FAF to MAP 9.6 NM	
Knots	60 90 120 150 180
Min:Sec	9:36 6:24 4:48 3:50 3:12