

NATCHEZ, MISSISSIPPI

|   |                        |                             |   |
|---|------------------------|-----------------------------|---|
| VOR/DME HEZ<br><b>110.0</b><br>Chan <b>37</b> | APP CRS<br><b>124°</b> | Rwy Idg<br>TDZE<br>Apt Elev | <b>6500</b><br><b>266</b><br><b>272</b> |
|---|------------------------|-----------------------------|---|

AL-967 (FAA)

NATCHEZ/  
HARDY-ANDERS FIELD NATCHEZ-ADAMS COUNTY (HEZ)

# VOR/DME RWY 13

**▼** If local altimeter setting not received, use Vicksburg Tallulah Rgnl altimeter setting and increase all MDAs 140 feet, and increase S-13 Cats A and B visibility to 1 mile, Cat C to 1½ miles, Cat D to 1¾ miles, and circling Cat C visibility to 1¾ miles, Cat D to 2¼ miles. Visibility reduction by helicopters NA. VDP NA when using Vicksburg Tallulah Rgnl altimeter setting. Inoperative table does not apply when using Vicksburg Tallulah Rgnl altimeter setting. For inoperative MALSRS, increase S-13 Cats A and B visibility to 1 mile.

MALSRS

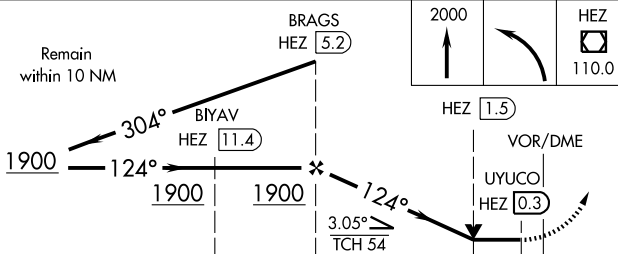
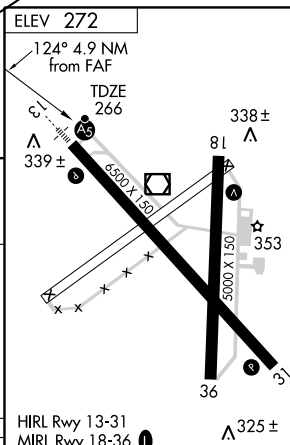
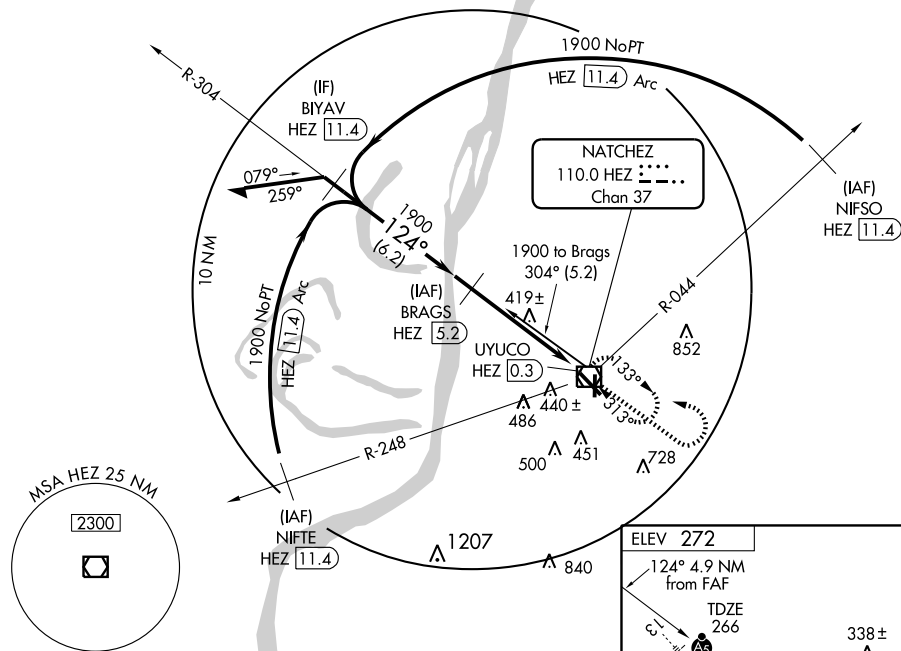


MISSED APPROACH: Climb to 2000 then left turn direct HEZ VOR/DME and hold.

AWOS-3  
**124.675**

HOUSTON CENTER  
**120.97 299.6**

UNICOM  
**122.8 (CTAF) 0**



|          |       |             |                        |                      |         |    |    |     |     |     |
|----------|-------|-------------|------------------------|----------------------|---------|----|----|-----|-----|-----|
| CATEGORY | A     | B           | C                      | D                    | Knots   | 60 | 90 | 120 | 150 | 180 |
| S-13     |       | 680-¾       | 414 (500-¾)            |                      | Min:Sec |    |    |     |     |     |
| CIRCLING | 740-1 | 468 (500-1) | 780-1½<br>508 (600-1½) | 840-2<br>568 (600-2) |         |    |    |     |     |     |

NATCHEZ, MISSISSIPPI  
Amdt 3 07354

NATCHEZ/ HARDY-ANDERS FIELD NATCHEZ-ADAMS COUNTY (HEZ)  
31°37'N - 91°18'W

# VOR/DME RWY 13

SC-4, 22 OCT 2009 to 19 NOV 2009

SC-4, 22 OCT 2009 to 19 NOV 2009