

NATCHEZ, MISSISSIPPI

AL-967 (FAA)

RNAV (GPS) RWY 36

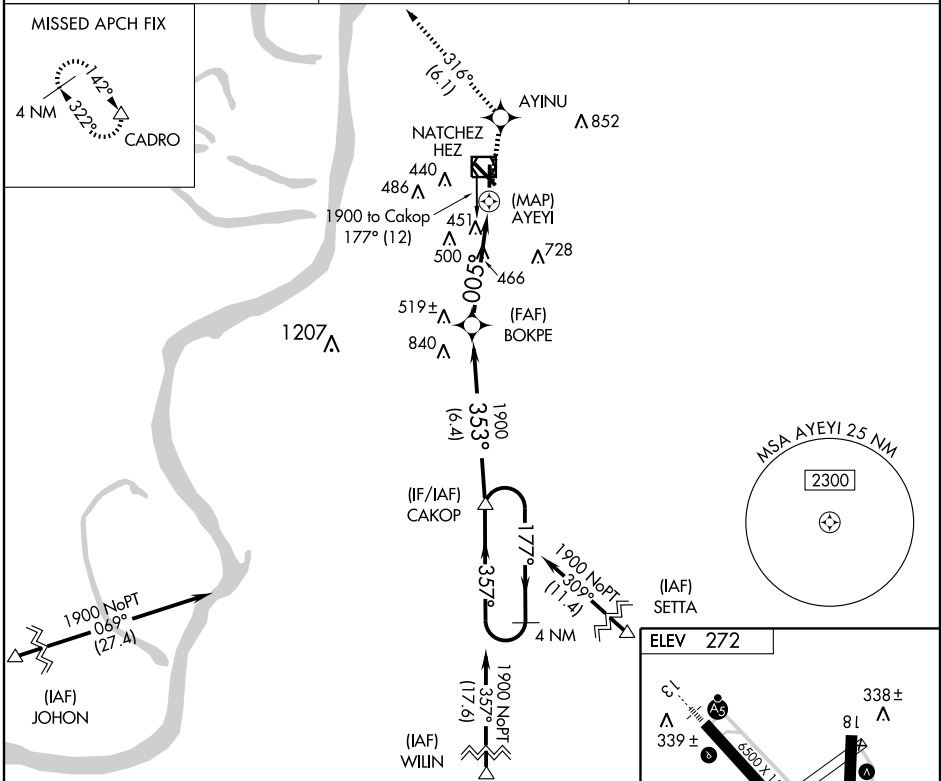
NATCHEZ/HARDY-ANDERS FIELD NATCHEZ-ADAMS COUNTY (HE/Z)

APP CRS 005°	Rwy Idg 5000
	TDZE 272
	Apt Elev 272

- ▼ When local altimeter setting not received, use Vicksburg Tallulah Rgnl altimeter setting and increase all MDAs 140 feet, and visibility Cat C ¼ mile and Cat D ½ mile. DME/DME RNP-0.3 NA. Visibility reduction by helicopters NA. Straight-in minimums NA at night.

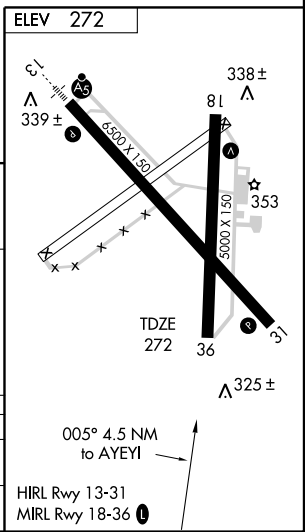
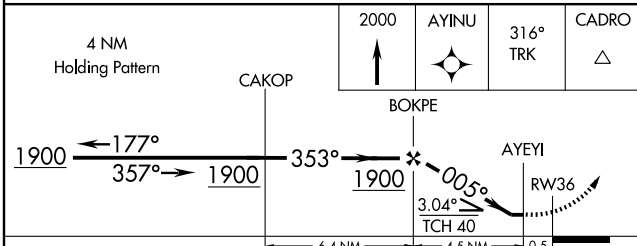
MISSED APPROACH: Climb to 2000 direct AYINU and via 316° track to CADRO and hold.

AWOS-3 124.675	HOUSTON CENTER 120.97 299.6	UNICOM 122.8 (CTAF) 0
--------------------------	---------------------------------------	---------------------------------



SC-4, 22 OCT 2009 to 19 NOV 2009

SC-4, 22 OCT 2009 to 19 NOV 2009



CATEGORY	A	B	C	D
LNAV MDA	780-1	508 (600-1)	780-1½	508 (600-1½)
CIRCLING	780-1	508 (600-1)	780-1½	840-2
			508 (600-1½)	568 (600-2)

NATCHEZ, MISSISSIPPI
Orig 07354

NATCHEZ/HARDY-ANDERS FIELD NATCHEZ-ADAMS COUNTY (HE/Z)
31°37' N - 91°18' W
RNAV (GPS) RWY 36