

RNAV (GPS) RWY 31

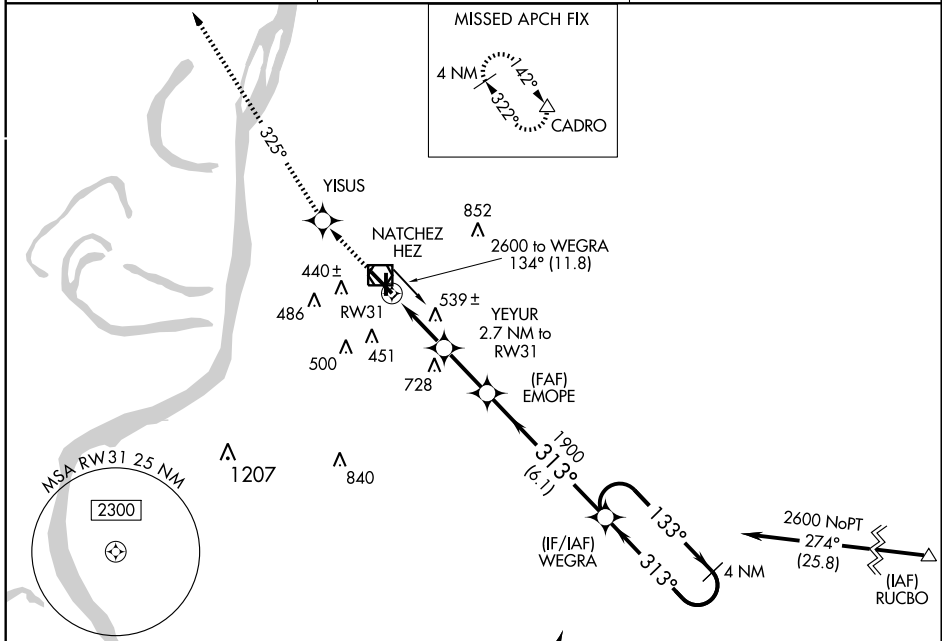
NATCHEZ/ HARDY-ANDERS FIELD NATCHEZ-ADAMS COUNTY (HE/Z)

APP CRS 313°	Rwy Idg 6500
	TDZE 272
	Apt Elev 272

▼ DME/DME RNP-0.3 NA. Visibility reduction by helicopters NA. When VGSI inoperative, straight-in minimums NA at night. When local altimeter setting not received, use Vicksburg Tallulah Rgnl altimeter setting and increase all MDAs 140 feet and visibility Cats C and D ¼ mile.

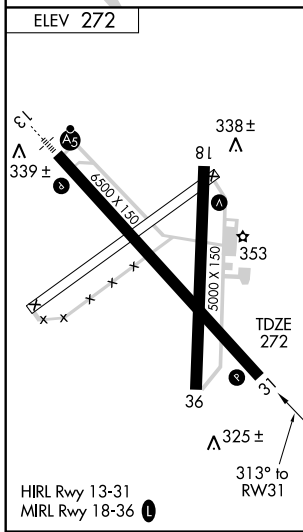
MISSED APPROACH: Climb to 2000 direct YISUS and via 325° track to CADRO and hold.

AWOS-3 124.675	HOUSTON CENTER 120.97 299.6	UNICOM 122.8 (CTAF) 0
--------------------------	---------------------------------------	---------------------------------



SC-4, 22 OCT 2009 to 19 NOV 2009

SC-4, 22 OCT 2009 to 19 NOV 2009



2000	YISUS	325° TRK	CADRO	4 NM Holding Pattern
			EMOPE	WEGRA
			1900	133° → 2600
			1160	← 313°
			2.7 NM	2.2 NM
			6.1 NM	
CATEGORY	A	B	C	D
RNAV MDA	800-1	528 (600-1)	800-1½ 528 (600-1½)	800-1¾ 528 (600-1¾)
CIRCLING	800-1	528 (600-1)	800-1½ 528 (600-1½)	840-2 568 (600-2)

RNAV (GPS) RWY 31