

RNAV (GPS) RWY 18

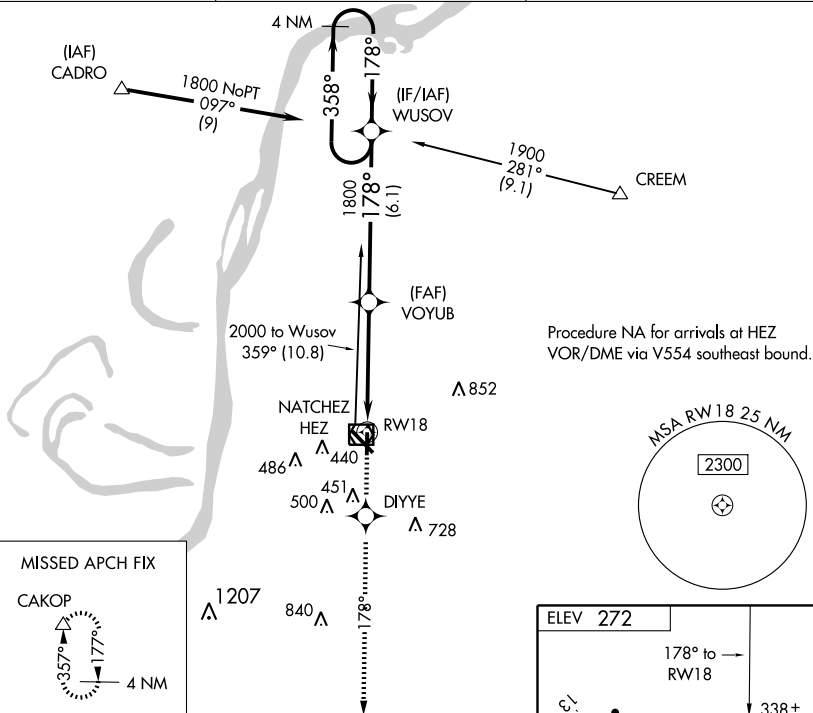
NATCHEZ/HARDY-ANDERS FIELD NATCHEZ-ADAMS COUNTY (HE/Z)

APP CRS 178°	Rwy Idg 5000
	TDZE 272
	Apt Elev 272

- ▼ When local altimeter setting not received, use Vicksburg Tallulah
- ▲ Rgnl altimeter setting and increase all MDAs 140 feet, and increase visibility Cats C and D ¼ mile. DME/DME RNP-0.3 NA. Visibility reduction by helicopters NA.

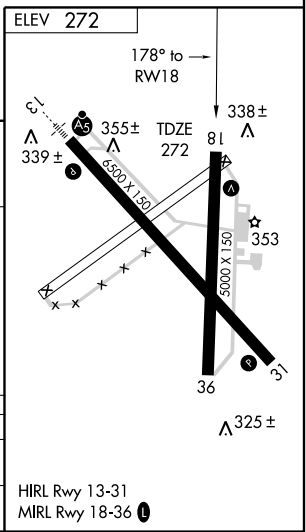
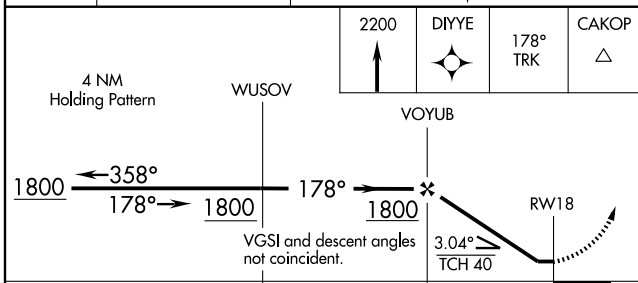
MISSED APPROACH: Climb to 2200 direct DIYYE and via 178° track to CAKOP and hold.

AWOS-3 124.675	HOUSTON CENTER 120.97 299.6	UNICOM 122.8 (CTAF)
--------------------------	---------------------------------------	-------------------------------



SC-4, 22 OCT 2009 to 19 NOV 2009

SC-4, 22 OCT 2009 to 19 NOV 2009



CATEGORY	A	B	C	D
LNAV MDA	620-1 348 (400-1)		620-1¼ 348 (400-1¼)	
CIRCLING	740-1	468 (500-1)	780-1½ 508 (600-1½)	840-2 568 (600-2)

HIRL Rwy 13-31
MIRL Rwy 18-36

RNAV (GPS) RWY 18