

NATCHEZ, MISSISSIPPI

AL-967 (FAA)

WAAS CH 50505 W13A	APP CRS 133°	Rwy Idg 6500 TDZE 266 Apt Elev 272
--	------------------------	---

NATCHEZ/
HARDY-ANDERS FIELD NATCHEZ-ADAMS COUNTY (HE/Z)

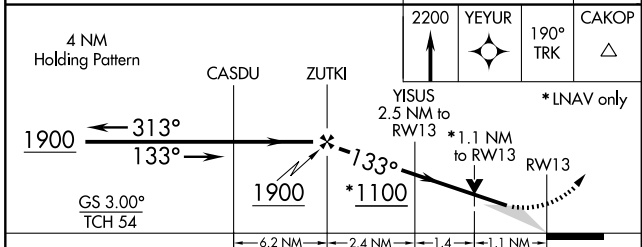
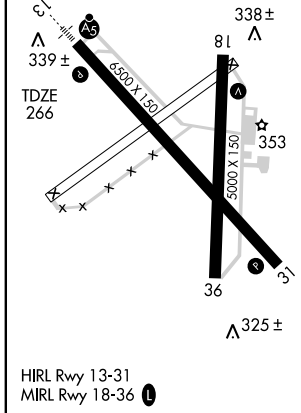
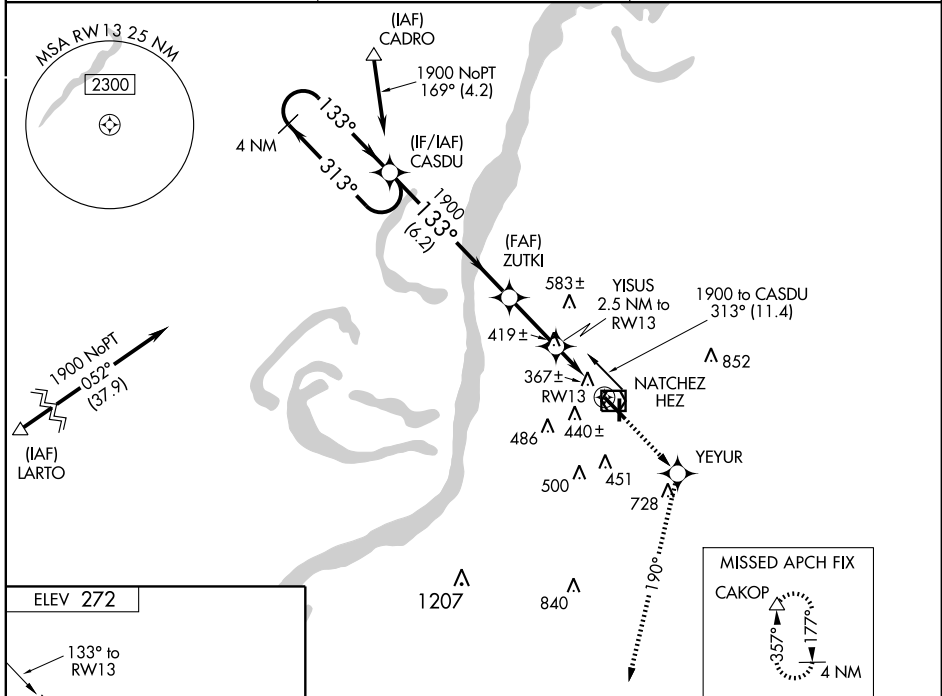
RNAV (GPS) RWY 13

For uncompensated BARO-VNAV systems, LNAV/VNAV NA below -15°C (5°F) or above 48°C (118°F). DME/DME RNP-0.3 NA. BARO VNAV and VDP NA when using Vicksburg Tallulah Rgnl altimeter setting. When local altimeter setting not received, use Vicksburg Rgnl altimeter setting: increase all LPV DAs to 655 and all visibilities to 1¼ miles; all LNAV/VNAVs DA to 785 and all visibilities to 1¾ miles; all MDAs 140 feet and LNAV Cat C visibility to 1½ miles, Cat D to 2 miles and circling Cat C visibility to 1¾ miles, Cat D to 2¼ miles. Inoperative table does not apply when using Vicksburg Tallulah Rgnl altimeter setting. For inoperative MALS, increase LNAV Cat D visibility ¼ mile.



MISSED APPROACH:
Climb to 2200 direct YEUR and via 190° track to CAKOP and hold.

AWOS-3 124.675	HOUSTON CENTER 120.97 299.6	UNICOM 122.8 (CTAF) 0
--------------------------	---------------------------------------	--



CATEGORY	A	B	C	D
LPV DA		522-½	256 (300-½)	
LNAV/VNAV DA		652-¾	386 (400-¾)	
LNAV MDA	680-½ 414 (500-½)		680-¾ 414 (500-¾)	680-1 414 (500-1)
CIRCLING	740-1 468 (500-1)		780-1½ 508 (600-1½)	840-2 568 (600-2)

NATCHEZ, MISSISSIPPI
Orig 07354

NATCHEZ/ HARDY-ANDERS FIELD NATCHEZ-ADAMS COUNTY (HE/Z)
31°37'N - 91°18'W

RNAV (GPS) RWY 13

SC-4, 22 OCT 2009 to 19 NOV 2009

SC-4, 22 OCT 2009 to 19 NOV 2009