


RNAV (GPS) Y RWY 26R

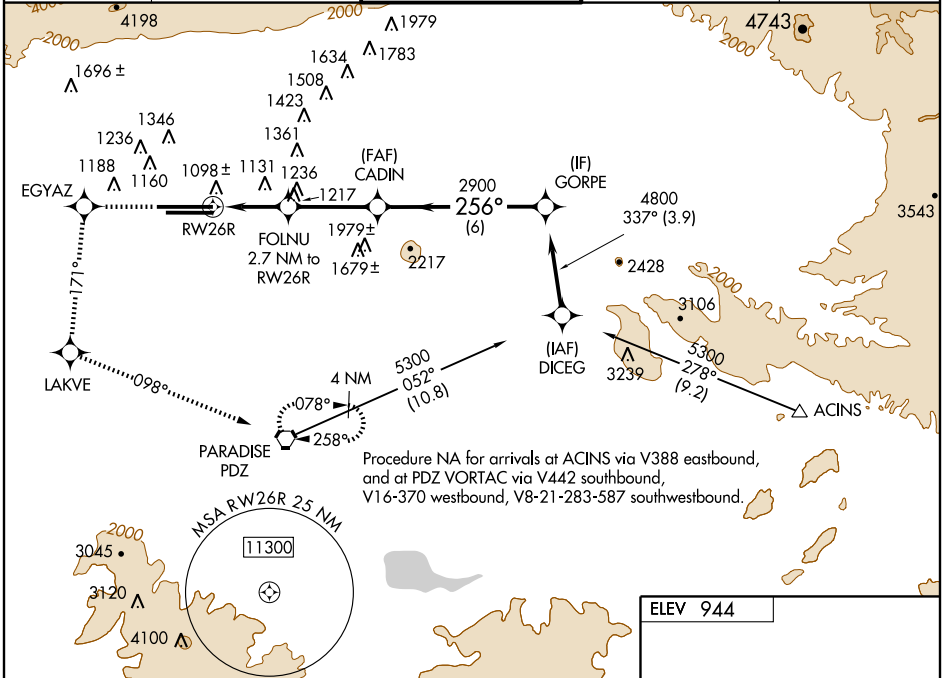
ONTARIO INTL (ONT)

WAAS CH 53406 W26A	APP CRS 256°	Rwy Idg 12197 TDZE 932 Apt Elev 944
---------------------------------	------------------------	--

⚠ When local altimeter setting not received, use Chino altimeter setting and increase all DAs/MDAs 60 feet and all visibilities ½ mile.
⚠ For uncompensated Baro-VNAV systems, LNAV/VNAV NA below -1.6°C (4°F) or above 47°C (116°F).
 VDP and Baro-VNAV NA when using Chino altimeter setting.
 DME/DME RNP-0.3 NA. Circling NA north of Rwy 8L-26R.

MALSR

MISSED APPROACH: Climb to 4000 direct to EGYAZ and via 171° track to LAKVE and via 098° track to PDZ VORTAC and hold.

ATIS 124.25	SOCAL APP CON 127.25 318.2	ONTARIO TOWER 120.6 360.775	GND CON 121.9 257.8	CLNC DEL 118.1
-----------------------	--------------------------------------	---------------------------------------	-------------------------------	--------------------------

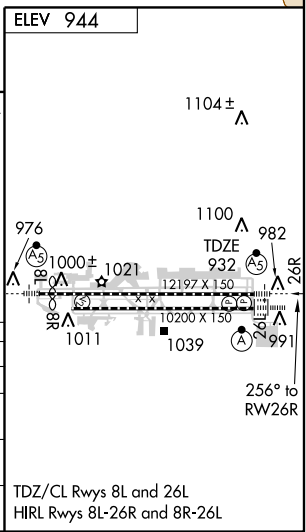
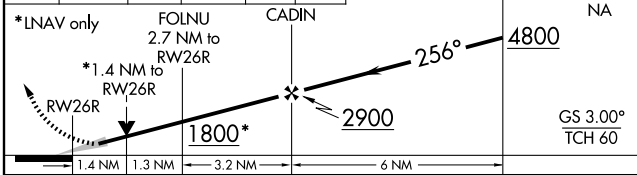


Procedure NA for arrivals at ACINS via V388 eastbound, and at PDZ VORTAC via V442 southbound, V16-370 westbound, V8-21-283-587 southwestbound.

SW-3, 22 OCT 2009 to 19 NOV 2009

SW-3, 22 OCT 2009 to 19 NOV 2009

4000	EGYAZ	171° track	LAKVE	098° track	PDZ	VGSi and RNAV glidepath not coincident.
------	-------	------------	-------	------------	-----	---



CATEGORY	A	B	C	D
LPV DA		1182/24	250 (300-½)	
LNAV/ VNAV DA		1406/50	474 (500-1)	
LNAV MDA	1440/24	508 (500-½)	1440/50	508 (500-1)
CIRCLING	1440-1	496 (500-1)	1440-1½ 496 (500-1½)	1500-2 556 (600-2)

TDZ/CL Rwys 8L and 26L
 HIRL Rwys 8L-26R and 8R-26L