

RNAV (GPS) Y RWY 26L

ONTARIO INTL (ONT)

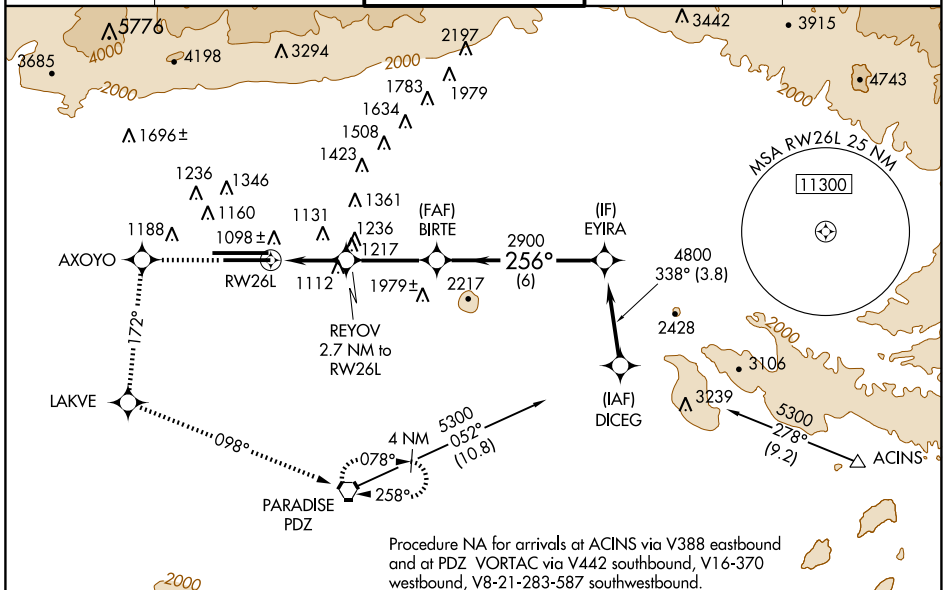
WAAS CH 90407 W26B	APP CRS 256°	Rwy Idg 10200 TDZE 926 Apt Elev 944
--	------------------------	--

▼ DME/DME RNP -0.3 NA. Circling NA north of Rwy 8L-26R.
▲ For uncompensated Baro-VNAV systems, LNAV/VNAV NA below -16°C (4°F) or above 47°C (116°F).
 Baro-VNAV and VDP NA when using Chino altimeter setting.
 When local altimeter setting not received, use Chino altimeter setting and increase all DAs/MDAs 60 feet and all visibilities ½ mile.



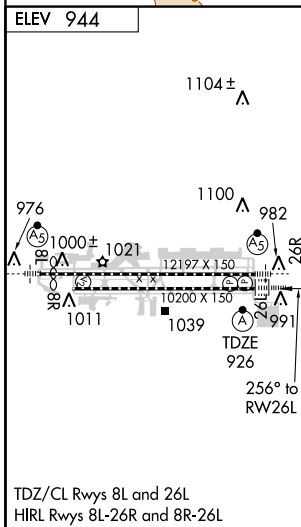
MISSED APPROACH: Climb to 4000 direct AXOYO and via 172° track to LAKVE and via 098° track to PDZ VORTAC and hold.

ATIS 124.25	SOCAL APP CON 127.25 318.2	ONTARIO TOWER 120.6 360.775	GND CON 121.9 257.8	CLNC DEL 118.1
-----------------------	--------------------------------------	--	-------------------------------	--------------------------



SW-3, 22 OCT 2009 to 19 NOV 2009

SW-3, 22 OCT 2009 to 19 NOV 2009



4000	AXOYO	172° track	LAKVE	098° track	PDZ	BIRTE	EYIRA
*LNAV only		REYOV 2.7 NM to RW26L		4800		Procedure Turn NA GS 3.00° TCH 50	
1.4 NM		1.3 NM		3.2 NM		6 NM	
CATEGORY	A		B		C		D
LPV DA	1176/24		250 (300-½)				
LNAV/VNAV DA	1405/60		479 (500-1½)				
LNAV MDA	1420/24	494 (500-½)		1420/40	494 (500-¾)		1420/50 494 (500-1)
CIRCLING	1420-1	476 (500-1)		1420-1½	476 (500-1½)		1500-2 556 (600-2)