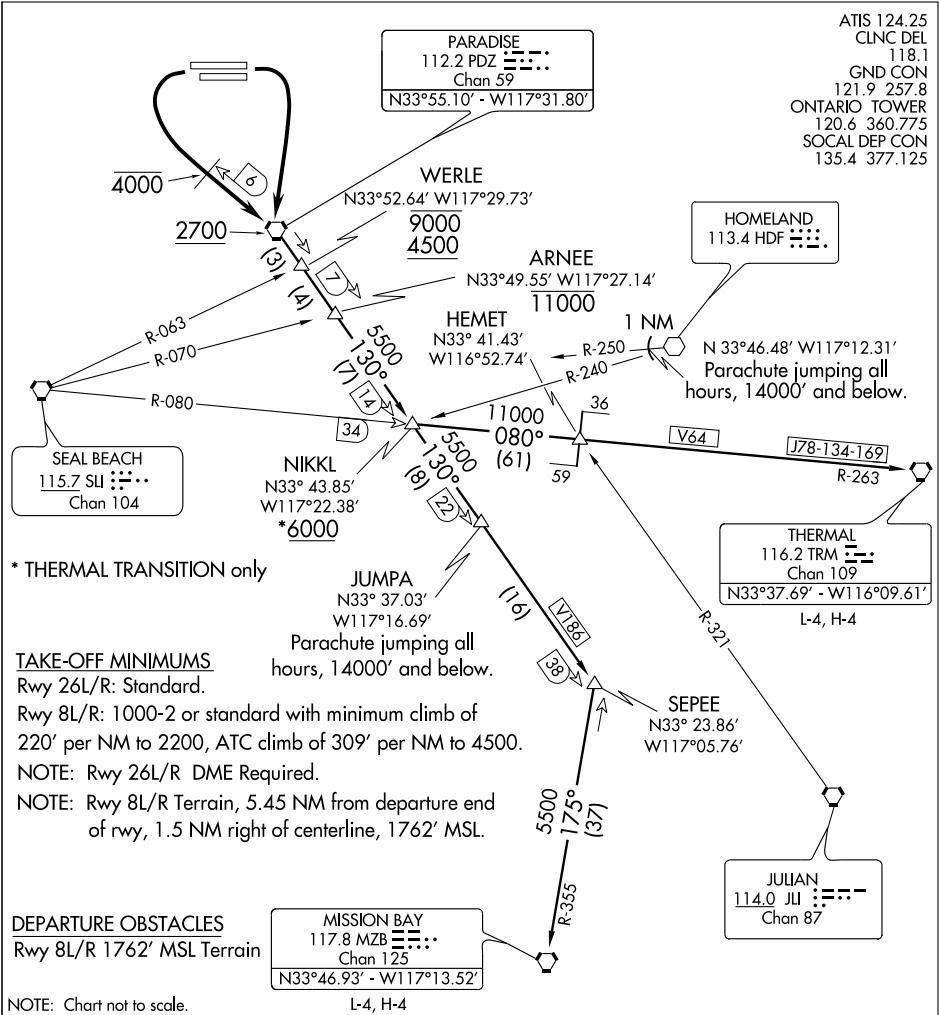


PRADO SEVEN DEPARTURE

SL-965 (FAA)

ONTARIO INTL (ONT)
ONTARIO, CALIFORNIA

ATIS 124.25
 CLNC DEL 118.1
 GND CON 121.9 257.8
 ONTARIO TOWER 120.6 360.775
 SOCAL DEP CON 135.4 377.125



SW-3, 22 OCT 2009 to 19 NOV 2009

SW-3, 22 OCT 2009 to 19 NOV 2009

* THERMAL TRANSITION only

TAKE-OFF MINIMUMS

Rwy 26L/R: Standard.
 Rwy 8L/R: 1000-2 or standard with minimum climb of 220' per NM to 2200, ATC climb of 309' per NM to 4500.
 NOTE: Rwy 26L/R DME Required.
 NOTE: Rwy 8L/R Terrain, 5.45 NM from departure end of rwy, 1.5 NM right of centerline, 1762' MSL.

DEPARTURE OBSTACLES

Rwy 8L/R 1762' MSL Terrain

NOTE: Chart not to scale.

DEPARTURE ROUTE DESCRIPTION

TAKE-OFF RWY 8L/R: Climbing right turn direct PDZ VORTAC. Thence...
TAKE-OFF RWY 26L/R: Climbing left turn direct PDZ VORTAC, cross 6 DME northwest of PDZ VORTAC at or below 4000'. Thence...
 ...via (assigned transition) or (assigned route). Cross PDZ VORTAC at or above 2700', expect filed altitude ten minutes after departure.
MISSION BAY TRANSITION (PRDO7.MZB): From over PDZ VORTAC via PDZ R-130 and MZB R-355 to MZB VORTAC.
THERMAL TRANSITION (PRDO7.TRM): From over PDZ VORTAC via PDZ R-130, SLI R-080 and TRM R-263 to TRM VORTAC.

PRADO SEVEN DEPARTURE