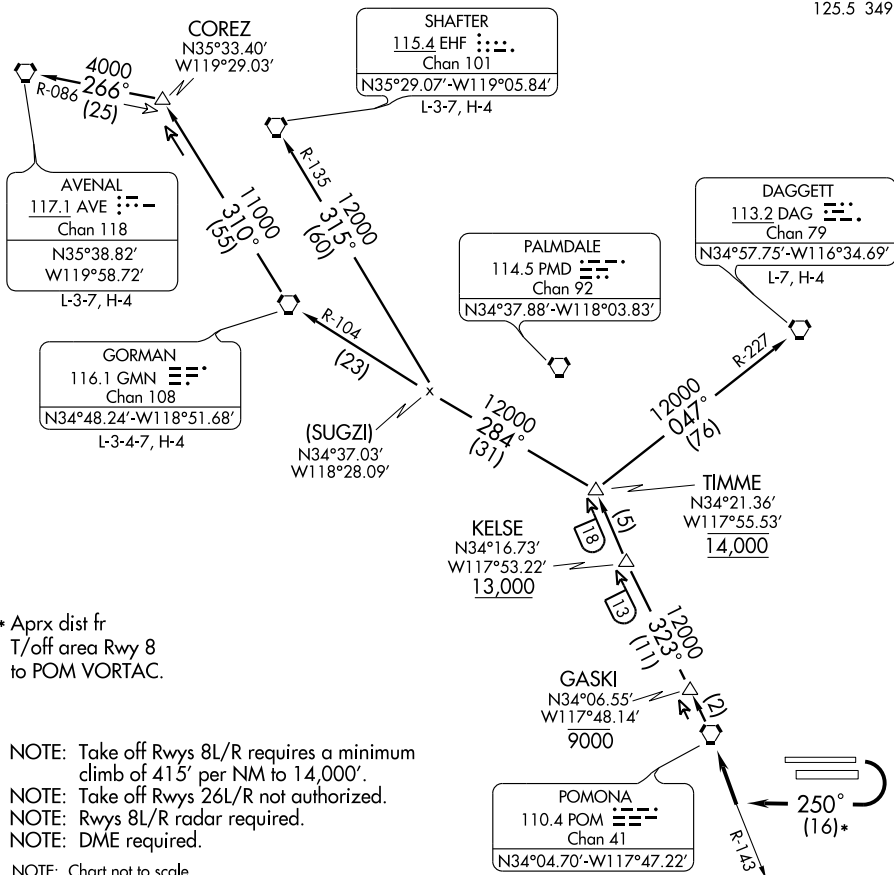


# ONTARIO TWO DEPARTURE

SL-965 (FAA)

ONTARIO INTL (ONT)  
ONTARIO, CALIFORNIA

ATIS 124.25  
CLNC DEL 118.1  
SOCAL DEP CON  
125.5 349.0



SW-3, 22 OCT 2009 to 19 NOV 2009

SW-3, 22 OCT 2009 to 19 NOV 2009

\* Aprx dist fr  
T/off area Rwy 8  
to POM VORTAC.

NOTE: Take off Rwys 8L/R requires a minimum  
climb of 415' per NM to 14,000'.

NOTE: Take off Rwys 26L/R not authorized.

NOTE: Rwys 8L/R radar required.

NOTE: DME required.

NOTE: Chart not to scale.

## DEPARTURE ROUTE DESCRIPTION

**TAKE-OFF RUNWAYS 8L/R:** Turn right heading 250° to intercept and proceed via POM R-143 to POM VORTAC. Cross GASKI at or below 9000, cross KELSE at or above 13,000, cross TIMME at 14,000. Then via (transition) or (assigned route). Expect clearance to filed altitude 10 minutes after departure.

**AVENAL TRANSITION (ONT2.AVE):**

**DAGGETT TRANSITION (ONT2.DAG):**

**GORMAN TRANSITION (ONT2.GMN):**

**SHAFTER TRANSITION (ONT2.EHF):**

# ONTARIO TWO DEPARTURE