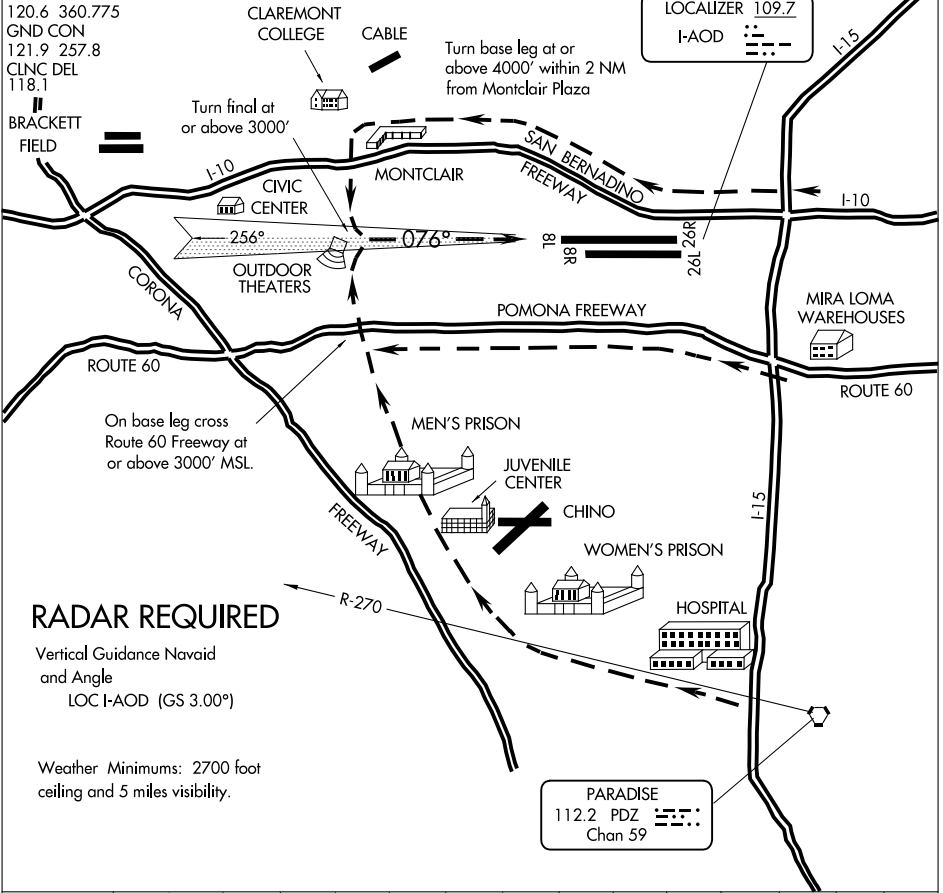


INTERSTATE VISUAL RWY 8L

AL-965 (FAA)

ONTARIO INTL (ONT)
ONTARIO, CALIFORNIA

ATIS 124.25
 SOCAL APP CON
 127.25 318.2
 ONTARIO TOWER
 120.6 360.775
 GND CON
 121.9 257.8
 CLNC DEL
 118.1



SW-3, 22 OCT 2009 to 19 NOV 2009

SW-3, 22 OCT 2009 to 19 NOV 2009

1	2	3	4	5	6	7	8	9	10	11	12	13	14	15	16
---	---	---	---	---	---	---	---	---	----	----	----	----	----	----	----

INTERSTATE VISUAL RWY 8L

When Visual Approaches to Runway 8L are in progress, clearances will be given utilizing in part the following phraseology:

"(IDENT) CLEARED FOR INTERSTATE VISUAL RUNWAY 8L APPROACH."

INTERSTATE VISUAL RWY 8L