

LOC/DME I-ONT 109.7 Chan 34	APP CRS 256°	Rwy Idg 26R 12197 TDZE 932 Apt Elev 944	Rwy Idg 26L 10200 TDZE 926 Apt Elev 944
--	------------------------	--	--

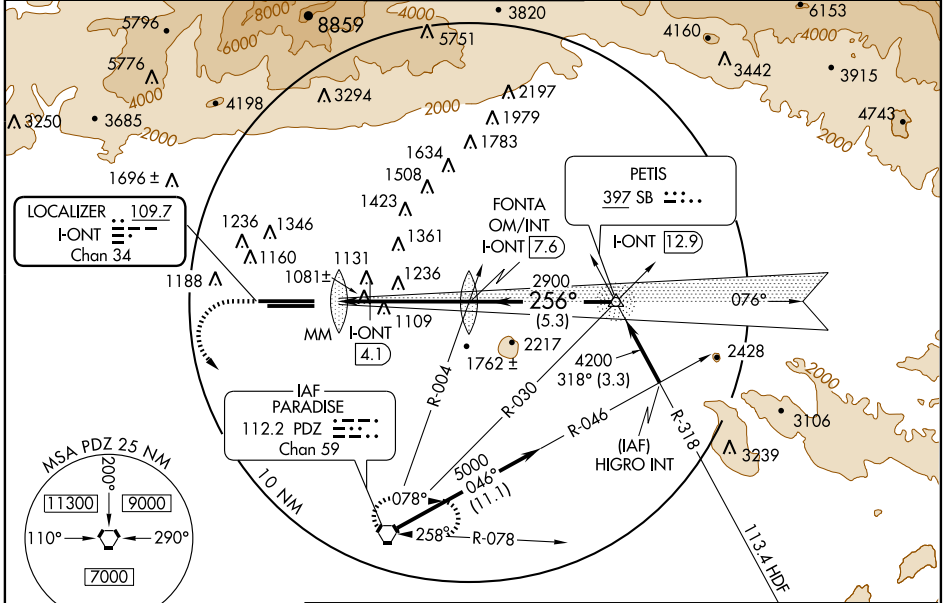
ILS or LOC RWY 26R

ONTARIO INTL (ONT)

▼ Circling NA north of Rwy 8L-26R
Inoperative table does not apply to sidestep Rwy 26L Cots A and B.

ALSF-2 Rwy 26L	MALSR Rwy 26R	MISSED APPROACH: Climb to 1700 then climbing left turn to 4000 direct PDZ VORTAC and hold.
----------------	---------------	--

ATIS 124.25	SOCAL APP CON 127.25 318.2	ONTARIO TOWER 120.6 360.775	GND CON 121.9 257.8	CLNC DEL 118.1
-----------------------	--------------------------------------	---------------------------------------	-------------------------------	--------------------------



SW-3, 22 OCT 2009 to 19 NOV 2009

SW-3, 22 OCT 2009 to 19 NOV 2009

ELEV 944

1104 ±

256° 5.5 NM from FAF

1100

976

1000 ± 1021

12197 X 150

1011

1039

991

982

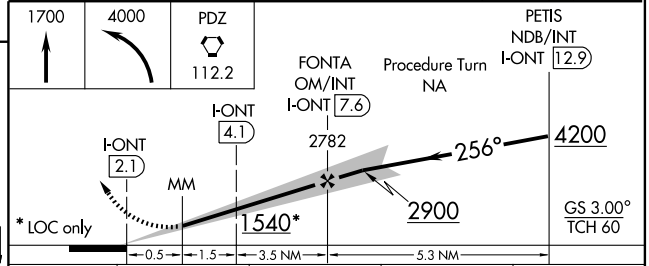
TDZE 932

TDZE 926

TDZ/CL Rwy 8L and 26L
HIRL Rwy 8L-26R and 8R-26L

FAF to MAP 5.5 NM

Knots	60	90	120	150	180
Min:Sec	5:30	3:40	2:45	2:12	1:50



	A	B	C	D
CATEGORY	1132/24 200 (200-½)			
S-ILS 26R	1132/24 200 (200-½)			
S-LOC 26R	1540/24	608 (600-½)	1540/60 608 (600-¼)	1540-1½ 608 (600-½)
SIDESTEP RWY 26L	1540/50	614 (600-1)	1540/60 614 (600-¼)	1540-1½ 614 (600-½)
CIRCLING	1540-1	596 (600-1)	1540-1¾ 596 (600-¼)	1540-2 596 (600-2)
DME MINIMUMS				
S-LOC 26R	1340/24	408 (400-½)	1340/40	408 (400-¾)
CIRCLING	1380-1 436 (500-1)	1400-1 456 (500-1)	1400-1¾ 456 (500-¼)	1500-2 556 (600-2)