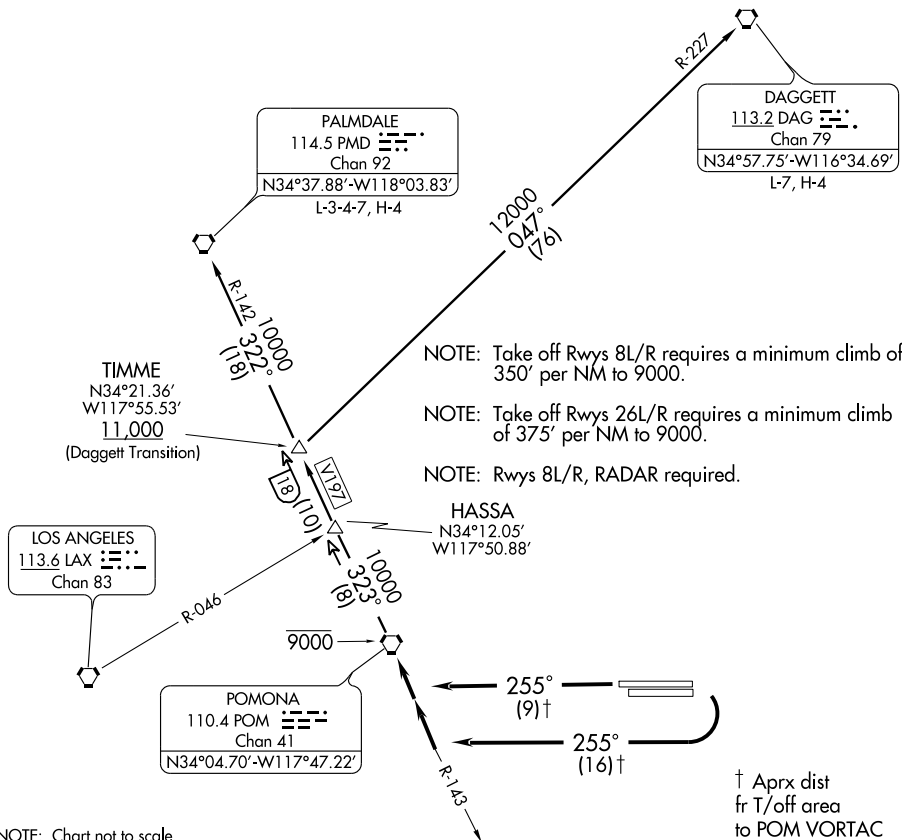


ATIS 124.25
CLNC DEL 118.1
SOCAL DEP COM
125.5 349.0

SW-3, 22 OCT 2009 to 19 NOV 2009

SW-3, 22 OCT 2009 to 19 NOV 2009



NOTE: Chart not to scale.

† Aprx dist
fr T/off area
to POM VORTAC

DEPARTURE ROUTE DESCRIPTION

TAKE-OFF RUNWAYS 8L/R: Turn right heading 255° to intercept and proceed via POM R-143 to POM VORTAC. Thence....

TAKE-OFF RUNWAYS 26L/R: Fly heading 255° to intercept and proceed via POM R-143 to POM VORTAC. Thence....

....via (transition) or (assigned route). Cross POM VORTAC at or below 9000'.

Expect filed altitude 10 minutes after departure.

DAGGETT TRANSITION (HASA4.DAG): From over POM VORTAC via POM R-323 and DAG R-227 to DAG VORTAC.

PALMDALE TRANSITION (HASA4.PMD): From over PMD VORTAC via POM R-323 and PMD R-142 to PMD VORTAC.