


RNAV (GPS) RWY 32R

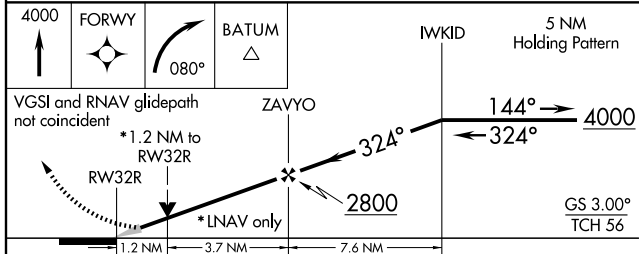
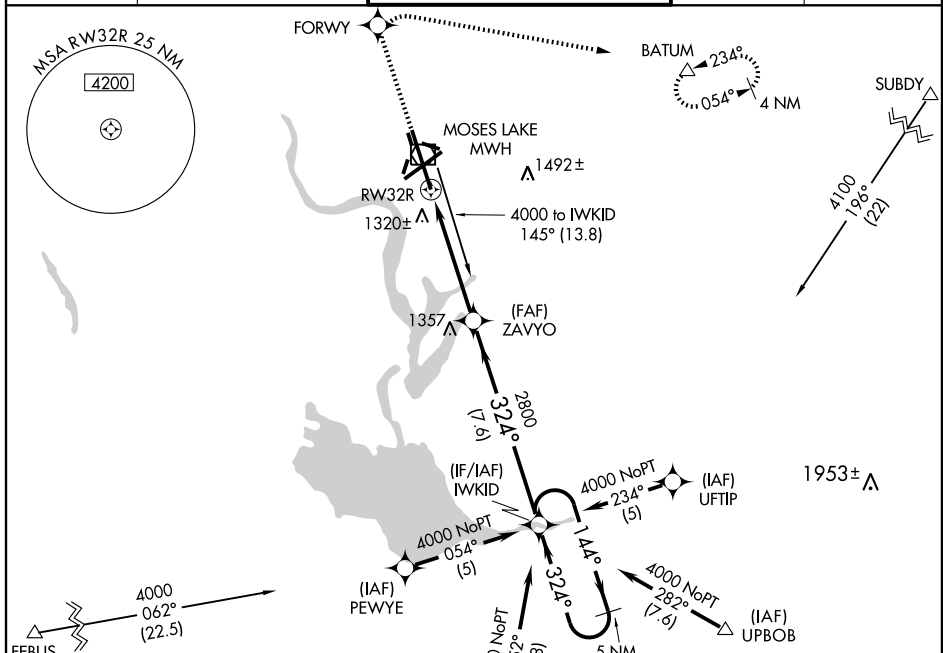
MOSES LAKE/GRANT COUNTY INTL (MWH)

WAAS CH 77799 W32A	APP CRS 324°	Rwy Idg 13503 TDZE 1164 Apt Elev 1185
--	------------------------	--

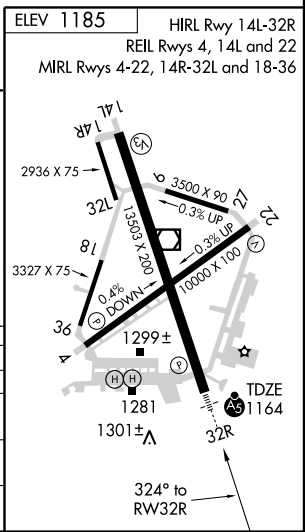
▼ DME/DME RNP-0.3 NA. Baro-VNAV NA below -17°C (1°F).
For inoperative MALSR increase LPV all Cats visibility to 1½.

MALSR  MISSED APPROACH: Climb to 4000 direct FORWY and right turn via 080° track to BATUM and hold, continue climb-in-hold to 4000.

ATIS 119.05	GRANT COUNTY APP CON * 126.4 379.95	GRANT COUNTY TOWER * 118.25 (CTAF) 128.0 257.8	GND CON 121.9	UNICOM 122.95
-----------------------	---	--	-------------------------	-------------------------



CATEGORY	A	B	C	D
LPV DA		1414/24	250 (300-½)	
LNNAV/VNAV DA		1667/60	503 (500-1¼)	
LNNAV MDA	1620/24	456 (500-½)	1620/40 456 (500-¾)	1620/50 456 (500-1)
CIRCLING		1680-1¾	495 (500-1¾)	1740-2 555 (600-2)



NW-1, 22 OCT 2009 to 19 NOV 2009

NW-1, 22 OCT 2009 to 19 NOV 2009