

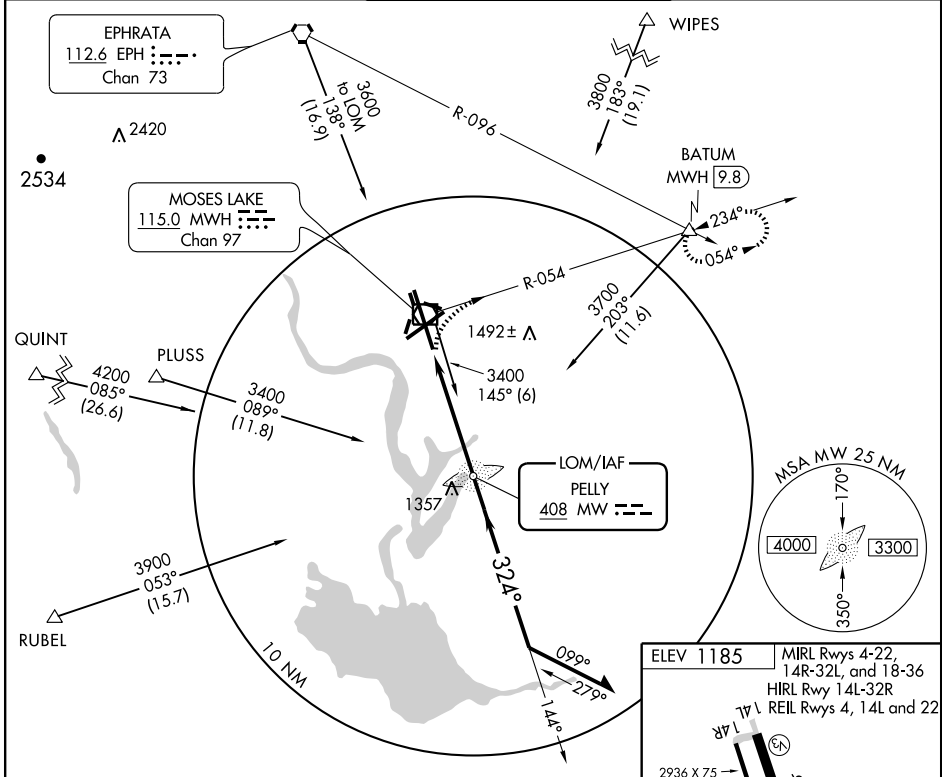
LOM MW 408	APP CRS 324°	Rwy Idg TDZE Apt Elev	13503 1164 1185
----------------------	------------------------	-----------------------------	--------------------------------------------

NDB RWY 32R

MOSES LAKE/GRANT COUNTY INTL (MWH)

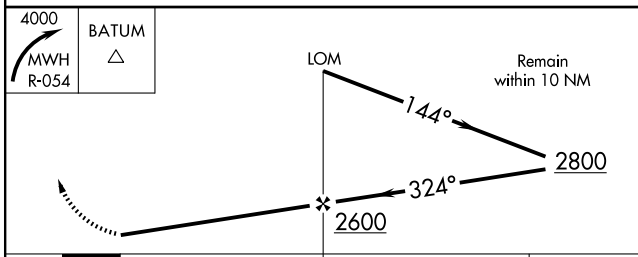
	MALSR	MISSED APPROACH: Climbing right turn to 4000 via MWH R-054 to BATUM Int/MWH 9.8 DME and hold.

ATIS 119.05	GRANT COUNTY APP CON * 126.4 379.95	GRANT COUNTY TOWER * 118.25 (CTAF) 128.0 257.8	GND CON 121.9	UNICOM 122.95
-----------------------	-----------------------------------------------	----------------------------------------------------------	-------------------------	-------------------------



NW-1, 22 OCT 2009 to 19 NOV 2009

NW-1, 22 OCT 2009 to 19 NOV 2009



ELEV 1185

MIRL Rwy 4-22, 14R-32L, and 18-36
HIRL Rwy 14L-32R
REIL Rwy 4, 14L and 22

324° 4.7 NM from FAF

FAF to MAP 4.7 NM

Knots	60	90	120	150	180
Min:Sec	4:42	3:08	2:21	1:53	1:34

CATEGORY	A	B	C	D
S-32R	1680/40 516 (500-¾)		1680/50 516 (500-1)	1680-1½ 516 (500-1½)
CIRCLING	1680-1 495 (500-1)		1680-1½ 495 (500-1½)	1740-2 555 (600-2)