

LOC I-MWH	APP CRS	Rwy Idg	13503
109.5	324°	TDZE	1167
		Apt Elev	1189

ILS or LOC RWY 32R

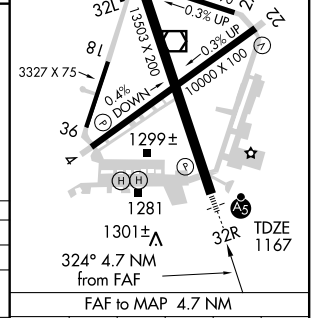
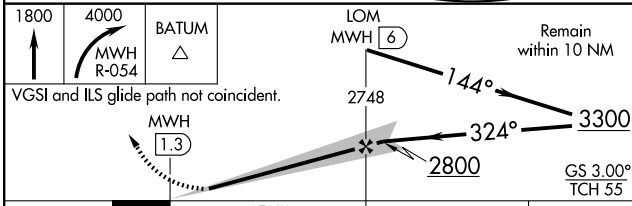
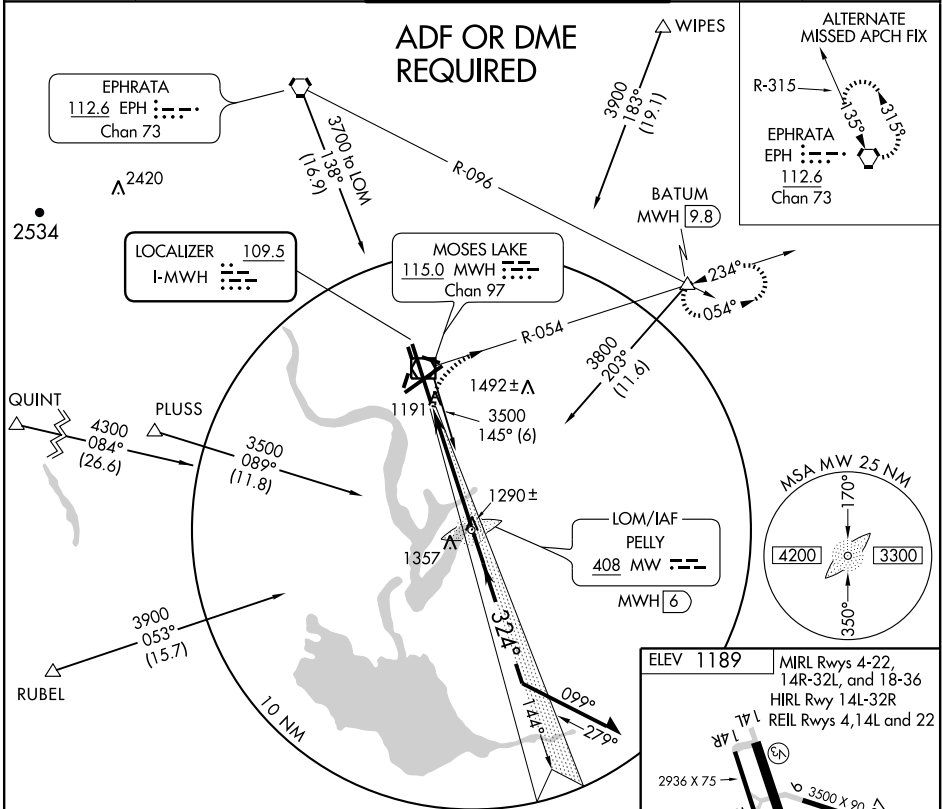
MOSES LAKE/ GRANT COUNTY INTL (MWH)

- For inoperative MALSR, increase S-LOC 32R Cat. D visibility to RVR 5000.
- If local altimeter setting not received, use Ephrata altimeter setting and increase all DA/MDAs 40 feet.
- *RVR 1800 authorized with the use of FD or AP or HUD to DA.

MALSR

 MISSED APPROACH: Climb to 1800, then climbing right turn to 4000 via MWH R-054 to BATUM INT/MWH 9.8 DME and hold, continue climb-in-hold to 4000.

ATIS	GRANT COUNTY APP CON *	GRANT COUNTY TOWER *	GND CON	UNICOM
119.05	126.4 379.95	118.25 (CTAF) 128.0 257.8	121.9	122.95



CATEGORY	A	B	C	D
S-ILS 32R			200 (200-½)	
S-LOC 32R	1440/24	273 (300-½)	1440/40	273 (300-¾)
CIRCLING	1680-1 491 (500-1)	1680-1½ 491 (500-1½)	1740-2 551 (600-2)	

Knots	60	90	120	150	180
Min:Sec	4:42	3:08	2:21	1:53	1:34

NW-1, 22 OCT 2009 to 19 NOV 2009

NW-1, 22 OCT 2009 to 19 NOV 2009