

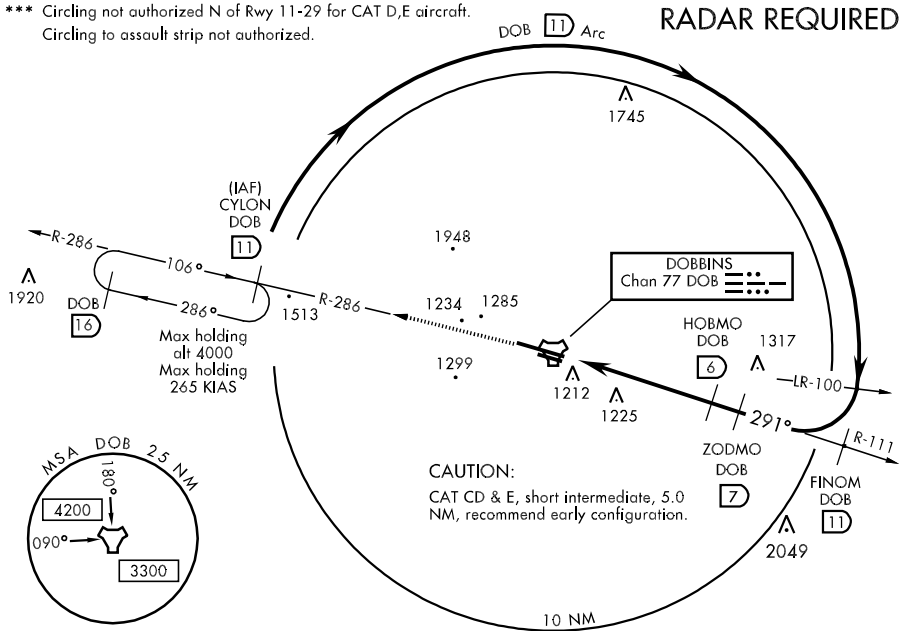
TACAN Chan <b>77</b>	DOB <b>291°</b>	APCH CRS <b>291°</b>	Rwy Idg <b>10,000</b> TDZE <b>1015</b> Arpt Elev <b>1068</b>	AL-959 [USAF]	DOBBINS ARB (KMGE)
----------------------	-----------------	----------------------	--	---------------	--------------------

\* When ALS inop, increase CAT AB RVR to 50 and vis to 1 mile, CAT C vis to 1 3/4 miles, CAT D vis to 2 miles, CAT E vis to 2 1/4 miles.  
 \*\* When ALS inop, CAT AB increase RVR to 40 and vis to 3/4 mile.

MISSED APPROACH: Climb to 3000 via DOB R-286 to CYLON and hold.

ATIS ★ <b>269.5</b>	ATLANTA APP CON <b>121.0 268.7</b>	DOBBINS TOWER ★ <b>120.75 370.875</b>	GND CON <b>125.3 275.8</b>	ASR/PAR
------------------------	---------------------------------------	--	-------------------------------	---------

\*\*\* Circling not authorized N of Rwy 11-29 for CAT D,E aircraft.  
 Circling to assault strip not authorized.



EMERG SAFE ALT 100 NM 7800

ELEV 1068	3000 DOB R-286	CYLON DOB 11	VGSI and Descent Angle not coincident	ZODMO DOB 7	HOBMO DOB 6	FINOM R-111 DOB 11	CYLON R-286 DOB 11
-----------	----------------	--------------	---------------------------------------	-------------	-------------	--------------------	--------------------

TACAN  
 ACUVI DOB 9  
 HOBMO DOB 6  
 ZODMO DOB 7  
 FINOM DOB 11  
 3200  
 3500  
 4000  
 4000  
 291°  
 3.61°  
 TCH 59  
 .5  
 5.1 NM

CATEGORY	A	B	C	D	E
S-29 *	1620/40	605 (600-3/4)	1620-1 1/2 605 (600-1 1/2)	1620-1 3/4 605 (600-1 3/4)	1620-2 605 (600-2)
CIRCLING ***	1680-1	612 (700-1)	1680-1 3/4 612 (700-1 3/4)	1700-2 632 (700-2)	1740-2 1/2 672 (700-2 1/2)
S-PAR 29 **	1215/24	200 (200-1/2)	1215/40	200 (200-3/4)	GS 3.0°

REIL Rwy 11-29  
 HIRL Rwy 11-29

SE-4, 22 OCT 2009 to 19 NOV 2009

SE-4, 22 OCT 2009 to 19 NOV 2009