

TACAN Chan 77	APCH CRS 106°	Rwy Idg TDZE 1068 Arpt Elev 1068	AL-959 [USAF]	DOBBINS ARB (KMGE)
-------------------------	-------------------------	--	---------------	--------------------

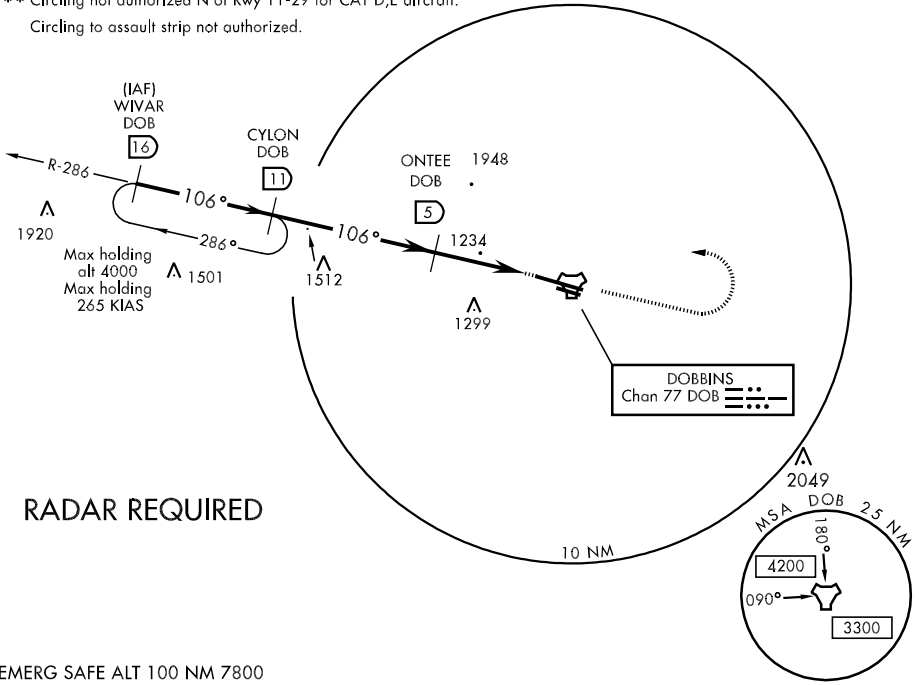
V * When ALS inop, increase CAT AB RVR to 50 and vis to 1 mile, CAT C vis to 1½ miles, CAT D vis to 1¾ miles, CAT E vis to 2 miles.
 ** When ALS inop, increase RVR to 60 and vis to 1¼ mile.



MISSED APPROACH: Climb to 2000 on track 106°, then climbing left turn to 3000 direct CYLON and hold.

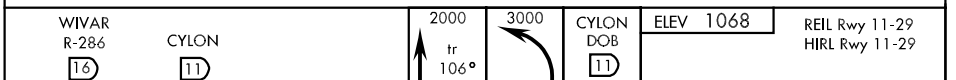
ATIS ★ 269.5	ATLANTA APP CON 121.0 268.7	DOBBINS TOWER ★ 120.75 370.875	GND CON 125.3 275.8	ASR/PAR
------------------------	---------------------------------------	--	-------------------------------	---------

*** Circling not authorized N of Rwy 11-29 for CAT D,E aircraft.
 Circling to assault strip not authorized.

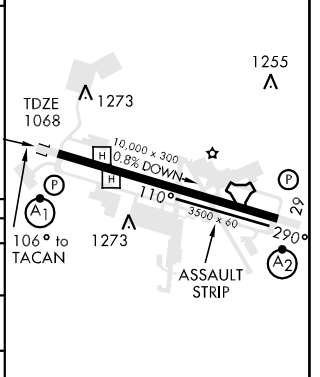


RADAR REQUIRED

EMERG SAFE ALT 100 NM 7800



	WIVAR R-286 16	CYLON 11	ONTEE 5	KAMSE 1.8	TACAN	ELEV 1068	REIL Rwy 11-29 HIRL Rwy 11-29
	3000	3000	2300	2000	3000		
	106°		106°	106°	106°		
	2.97° TCH 56						
			3.2 NM	.5			
CATEGORY	A	B	C	D	E		
S-11*	1640/40	572 (600-¾)	1640/50 572 (600-1)	1640/60 572 (600-1¼)	1640-1½ 572 (600-1½)		
CIRCLING ***	1680-1	612 (700-1)	1680-1¾ 612 (700-1¾)	1700-2 632 (700-2)	1740-2½ 672 (700-2½)		
S-PAR 11**	1461/40		393 (400-¾)	GS 3.0°			



SE-4, 22 OCT 2009 to 19 NOV 2009

SE-4, 22 OCT 2009 to 19 NOV 2009